

LEA Name : Southern Huntingdon County SD  
Address : 10339 Pogue Road  
Three Springs , PA 17264

County : Huntingdon  
AUN Number : 111317503  
LEA Type : SD

## Annual Financial Report Accuracy Certification Statement

For Fiscal Year Ending  
6/30/2019

Pennsylvania Department of Education  
&  
Office of Comptroller Operations

PDE-2056: Intermediate Unit  
PDE-2057: School District, AVTS/CTC, Charter School,  
and Special Program Jointure

**CERTIFICATION: By signing this page I agree that the electronic data submitted is a complete and accurate statement of the financial operations and status of the local education agency for the fiscal year. It has been prepared in accordance with generally accepted accounting principles and established Commonwealth of PA reporting guidelines.**

  
\_\_\_\_\_  
Chief School Administrator Signature

11-6-2019  
\_\_\_\_\_  
Date

  
\_\_\_\_\_  
Board Secretary Signature

11-6-2019  
\_\_\_\_\_  
Date

LuAnne Keebaugh

\_\_\_\_\_  
Contact Person

lkeebaugh@shcsd.org

\_\_\_\_\_  
Contact Person E-mail Address

(814)447-5529 Ext :2603

\_\_\_\_\_  
Contact Person Telephone Number

(814)447-3967

\_\_\_\_\_  
Contact Person Fax Number

**Audit Certification**  
**Annual Financial Report:**  
For Fiscal Year Ending **6/30/2019**  
**(Pursuant to PA School Code Section 218(b))**

LEA Name : Southern Huntingdon County SD  
AUN Number : 111317503  
County : Huntingdon

<b>Audit Certification Due:</b> 12/31/2019
---

This certification is applicable to the Annual Financial Report data submitted  
through the Consolidated Financial Reporting System on: 11-6-2019  
Date

**Auditing Firm:**  
Boyer & Ritter

CERTIFICATION: By signing this page I agree that the financial statements of the school have been properly audited as noted above pursuant to Article XXIV, and in the auditor's professional opinion, the Annual Financial Report (PDE-2057) submitted on the date referenced is materially consistent with the audited financial statements.

Chief School Administrator

  
Signature                      11/6/19  
Date

Board Secretary

  
Signature                      11/6/19  
Date

LuAnne Keebaugh

Contact Person

kkeebaugh@shcsd.org

Contact Person E-mail Address

(814)447-5529

Ext :2603

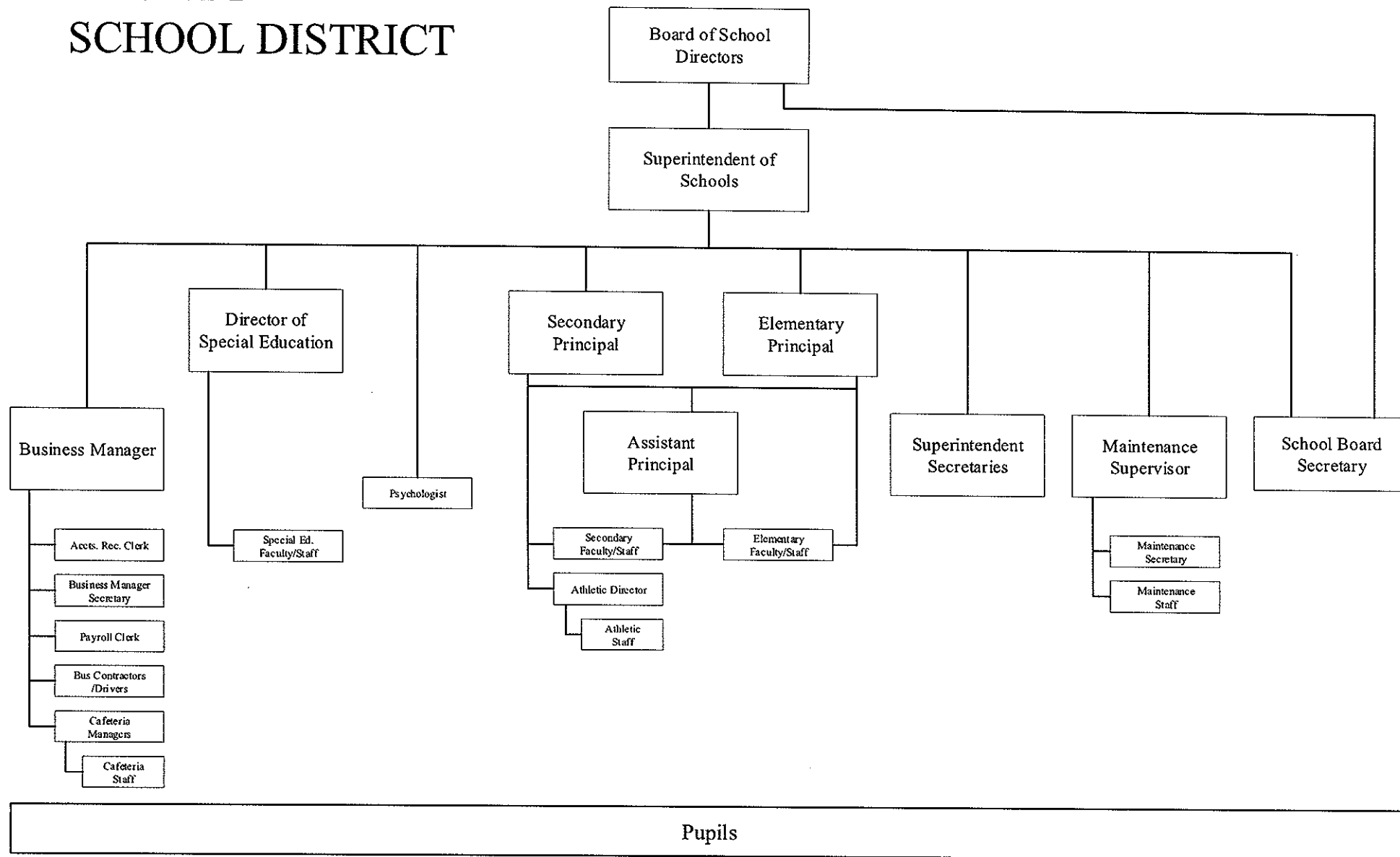
Contact Person Telephone Number

(814)447-3967

Contact Person Fax Number

SECTION: LOCAL BOARD PROCEDURES  
TITLE: ORGANIZATION CHART

# SOUTHERN HUNTINGDON COUNTY SCHOOL DISTRICT



<u>Val Number</u>	<u>Description</u>	<u>Justification</u>
41162	<p>Expenditure Detail, Salaries (Object 100) and Benefits (Object 200 series): Amounts must be entered for both Salaries and Benefits.</p> <p>Please verify following fund and function codes: Fund 10 Function 2910;</p>	<p>The District pays unemployment compensation from this account.</p>

Amounts Expressed in Whole Dollars		<u>General Fund</u> <u>(10)</u>	<u>Public Purpose Trust</u> <u>(27)</u>	<u>Other Compt Approved</u> <u>(28)</u>	<u>Athletic / Activity</u> <u>(29)</u>	<u>Capital Reserve (690.</u> <u>1850)</u> <u>(31)</u>
<b>Assets And Deferred Outflows Of Resources</b>						
<b>Assets</b>						
0100	Cash and Cash Equivalents	2,069,539				
0110	Investments	4,424,656				
0120	Taxes Receivable	619,133				
0130	Due From Other Funds	72,952				
0141	Due From Other Governments					
0142	State Revenue Receivable	790,622				
0143	Federal Revenue Receivable	85,181				
0145	Other Intergovernmental Revenue Receivable	42,690				
0146	Due from Primary Government					
0147	Due from Component Unit					
0150	Other Receivables					
0170	Inventories					
0180	Prepaid Expenses (Expenditures)					
0190	Other Current Assets					
<b>Total Assets</b>		<b>\$8,104,773</b>				
0910	Deferred Outflows of Resources					
<b>Total Assets And Deferred Outflows Of Resources</b>		<b>\$8,104,773</b>				

LEA : 111317503     Southern Huntingdon County SD

Printed 12/10/2019 2:56:01 PM

Amounts Expressed in Whole Dollars		<u>Capital Reserve (1431</u> <u>(32)</u>	<u>Other Capital Projects</u> <u>Fund</u> <u>(39)</u>	<u>Debt Service</u> <u>(40)</u>	<u>Permanent</u> <u>(90)</u>	<u>Total Governmental</u> <u>Funds</u>
<b>Assets And Deferred Outflows Of Resources</b>						
<b>Assets</b>						
0100	Cash and Cash Equivalents	558,740				2,628,279
0110	Investments	4,630,373				9,055,029
0120	Taxes Receivable					619,133
0130	Due From Other Funds					72,952
0141	Due From Other Governments					
0142	State Revenue Receivable					790,622
0143	Federal Revenue Receivable					85,181
0145	Other Intergovernmental Revenue Receivable					42,690
0146	Due from Primary Government					
0147	Due from Component Unit					
0150	Other Receivables					
0170	Inventories					
0180	Prepaid Expenses (Expenditures)					
0190	Other Current Assets					
<b>Total Assets</b>		<b>\$5,189,113</b>				<b>\$13,293,886</b>
0910	Deferred Outflows of Resources					
<b>Total Assets And Deferred Outflows Of Resources</b>		<b>\$5,189,113</b>				<b>\$13,293,886</b>

Amounts Expressed in Whole Dollars		<u>General Fund</u> <u>(10)</u>	<u>Public Purpose Trust</u> <u>(27)</u>	<u>Other Compt Approved</u> <u>(28)</u>	<u>Athletic / Activity</u> <u>(29)</u>	<u>Capital Reserve (690.</u> <u>1850)</u> <u>(31)</u>
<b>Liabilities And Deferred Inflows Of Resources And Fund Balances</b>						
<b>Liabilities</b>						
0400	Due to Other Funds					
0411	Due to Other Governments					
0412	Due to Primary Government					
0413	Due to Component Unit					
0420	Accounts Payable	262,566				
0430	Contracts Payable					
0440	Current Portion of Long-Term Debt					
0450	Short-Term Payables					
0461	Accrued Salaries and Benefits	1,292,865				
0462	Payroll Deductions and Withholding	22,749				
0480	Unearned Revenues	19,231				
0490	Other Current Liabilities					
<b>Total Liabilities</b>		<b>\$1,597,411</b>				
0950	Deferred Inflows of Resources	426,018				
<b>Fund Balances</b>						
0810	Nonspendable Fund Balance					
0820	Restricted Fund Balance					
0830	Committed Fund Balance					
0840	Assigned Fund Balance	6,081,344				
0850	Unassigned Fund Balance					
<b>Total Fund Balances</b>		<b>\$6,081,344</b>				
<b>Total Liabilities, Deferred Inflows Of Resources And Fund Balances</b>		<b>\$8,104,773</b>				

LEA : 111317503     Southern Huntingdon County SD

Printed 12/10/2019 2:56:01 PM

Amounts Expressed in Whole Dollars		<u>Capital Reserve (1431)</u> <u>(32)</u>	<u>Other Capital Projects</u> <u>Fund</u> <u>(39)</u>	<u>Debt Service</u> <u>(40)</u>	<u>Permanent</u> <u>(90)</u>	<u>Total Governmental</u> <u>Funds</u>
<b>Liabilities And Deferred Inflows Of Resources And Fund Balances</b>						
<b>Liabilities</b>						
0400	Due to Other Funds					
0411	Due to Other Governments					
0412	Due to Primary Government					
0413	Due to Component Unit					
0420	Accounts Payable					262,566
0430	Contracts Payable					
0440	Current Portion of Long-Term Debt					
0450	Short-Term Payables					
0461	Accrued Salaries and Benefits					1,292,865
0462	Payroll Deductions and Withholding					22,749
0480	Unearned Revenues					19,231
0490	Other Current Liabilities					
<b>Total Liabilities</b>						<b>\$1,597,411</b>
0950	Deferred Inflows of Resources					426,018
<b>Fund Balances</b>						
0810	Nonspendable Fund Balance					
0820	Restricted Fund Balance					
0830	Committed Fund Balance					
0840	Assigned Fund Balance	5,189,113				11,270,457
0850	Unassigned Fund Balance					
<b>Total Fund Balances</b>		<b>\$5,189,113</b>				<b>\$11,270,457</b>
<b>Total Liabilities, Deferred Inflows Of Resources And Fund Balances</b>		<b>\$5,189,113</b>				<b>\$13,293,886</b>



Amounts Expressed in Whole Dollars		<u>General Fund</u> <u>(10)</u>	<u>Public Purpose Trust</u> <u>(27)</u>	<u>Other Compt Approved</u> <u>(28)</u>	<u>Athletic / Activity</u> <u>(29)</u>	<u>Capital Reserve (690.</u> <u>1850)</u> <u>(31)</u>
<b>Revenues</b>						
6000	Revenue from Local Sources	5,692,249				
7000	Revenue from State Sources	11,271,642				
8000	Revenue from Federal Sources	451,536				
<b>Total Revenues</b>		<b>\$17,415,427</b>				
<b>Expenditures</b>						
1000	Instruction	10,198,865				
2000	Support Services	5,681,493				
3000	Operation of Non-Instructional Services	282,931				
4000	Facilities Acquisition, Construction and Improvement Services					
5110	Debt Service	822,664				
5130	Refund of Prior Year Revenues / Receipts	598				
<b>Total Expenditures</b>		<b>\$16,986,551</b>				
<b>Excess (Deficiency) Of Revenues Over Expenditures</b>		<b>\$428,876</b>				
<b>Other Financing Sources (Uses)</b>						
9110	Face Value of Bonds Issued					
9120	Proceeds from Refunding of Bonds					
9130	Bond Premiums					
9200	Proceeds from Extended-Term Financing					
9300	Interfund Transfers - IN					
9400	Sale of or Compensation for Loss of Fixed Assets					
9710	Transfers from Component Units					
9720	Transfers from Primary Governments					
9910	Other Financing Sources Not Listed in the 9000 Series					
9990	Insurance Recoveries					
5120	Debt Service – Refunded Bonds					
5150	Bond Discounts					
5200	Interfund Transfers – Out	2,000,000				
5300	Transfers Out to Component Units/Primary Governments					
<b>Total Other Financing Sources (Uses)</b>		<b>(\$2,000,000)</b>				

Amounts Expressed in Whole Dollars	<u>Capital Reserve (1431)</u> <u>(32)</u>	<u>Other Capital Projects</u> <u>Fund</u> <u>(39)</u>	<u>Debt Service</u> <u>(40)</u>	<u>Permanent</u> <u>(90)</u>	<u>Total Governmental</u> <u>Funds</u>
<b>Revenues</b>					
6000 Revenue from Local Sources	76,737				5,768,986
7000 Revenue from State Sources					11,271,642
8000 Revenue from Federal Sources					451,536
<b>Total Revenues</b>	<b>\$76,737</b>				<b>\$17,492,164</b>
<b>Expenditures</b>					
1000 Instruction					10,198,865
2000 Support Services					5,681,493
3000 Operation of Non-Instructional Services					282,931
4000 Facilities Acquisition, Construction and Improvement Services					
5110 Debt Service					822,664
5130 Refund of Prior Year Revenues / Receipts					598
<b>Total Expenditures</b>					<b>\$16,986,551</b>
<b>Excess (Deficiency) Of Revenues Over Expenditures</b>	<b>\$76,737</b>				<b>\$505,613</b>
<b>Other Financing Sources (Uses)</b>					
9110 Face Value of Bonds Issued					
9120 Proceeds from Refunding of Bonds					
9130 Bond Premiums					
9200 Proceeds from Extended-Term Financing					
9300 Interfund Transfers - IN	2,000,000				2,000,000
9400 Sale of or Compensation for Loss of Fixed Assets					
9710 Transfers from Component Units					
9720 Transfers from Primary Governments					
9910 Other Financing Sources Not Listed in the 9000 Series					
9990 Insurance Recoveries					
5120 Debt Service – Refunded Bonds					
5150 Bond Discounts					
5200 Interfund Transfers – Out					2,000,000
5300 Transfers Out to Component Units/Primary Governments					
<b>Total Other Financing Sources (Uses)</b>	<b>\$2,000,000</b>				<b>\$0</b>

Amounts Expressed in Whole Dollars		<u>General Fund</u> <u>(10)</u>	<u>Public Purpose Trust</u> <u>(27)</u>	<u>Other Compt Approved</u> <u>(28)</u>	<u>Athletic / Activity</u> <u>(29)</u>	<u>Capital Reserve</u> <u>(690.</u> <u>1850)</u> <u>(31)</u>
<b>Special And Extraordinary Items</b>						
9920	Special Items – Gains					
9930	Extraordinary Items – Gains					
5520	Special Items – Losses					
5530	Extraordinary Items – Losses					
<b>Net Change In Fund Balances</b>		<b>(\$1,571,124)</b>				
<b>Fund Balance</b>						
0001	Fund Balance - Beginning of Fiscal Year	7,652,467				
<b>Fund Balance - End Of Year</b>		<b>\$6,081,343</b>				

Amounts Expressed in Whole Dollars		<u>Capital Reserve (1431)</u> <u>(32)</u>	<u>Other Capital Projects</u> <u>Fund</u> <u>(39)</u>	<u>Debt Service</u> <u>(40)</u>	<u>Permanent</u> <u>(90)</u>	<u>Total Governmental</u> <u>Funds</u>
<b>Special And Extraordinary Items</b>						
9920	Special Items – Gains					
9930	Extraordinary Items – Gains					
5520	Special Items – Losses					
5530	Extraordinary Items – Losses					
<b>Net Change In Fund Balances</b>		<b>\$2,076,737</b>				<b>\$505,613</b>
<b>Fund Balance</b>						
0001	Fund Balance - Beginning of Fiscal Year	3,112,376				10,764,843
<b>Fund Balance - End Of Year</b>		<b>\$5,189,113</b>				<b>\$11,270,456</b>

Amounts Expressed in Whole Dollars		<u>Food Service</u> <u>(51)</u>	<u>Child Care</u> <u>Operations</u> <u>(52)</u>	<u>Other Enterprise</u> <u>(58)</u>	<u>TOTAL</u>	<u>Internal Service</u> <u>(60)</u>
<b>Assets And Deferred Outflows Of Resources</b>						
<b>Current Assets</b>						
0100	Cash and Cash Equivalents	14,512			14,512	
0110	Investments	2,746			2,746	
0130	Due From Other Funds					
0141	Due From Other Governments					
0142	State Revenue Receivable	3,445			3,445	
0143	Federal Revenue Receivable	49,599			49,599	
0146	Due from Primary Government					
0147	Due from Component Unit					
0150	Other Receivables					
0170	Inventories	12,620			12,620	
0180	Prepaid Expenses (Expenditures)					
0190	Other Current Assets					
<b>Total Current Assets</b>		<b>\$82,922</b>			<b>\$82,922</b>	
<b>Noncurrent Assets</b>						
0211	Land					
0212	Site Improvements (Net)					
0220	Buildings and Building Improvements (Net)					
0230	Machinery, Equipment and Furniture (Net)	17,401			17,401	
0250	Construction in Progress					
0260	Long Term Prepayments					
0290	Other Noncurrent Assets					
<b>Total Noncurrent Assets</b>		<b>\$17,401</b>			<b>\$17,401</b>	
0910	Deferred Outflows of Resources	122,167			122,167	
<b>Total Assets And Deferred Outflows Of Resources</b>		<b>\$222,490</b>			<b>\$222,490</b>	

Amounts Expressed in Whole Dollars	Food Service (51)	Child Care Operations (52)	Other Enterprise (58)	TOTAL	Internal Service (60)
<b>Liabilities And Deferred Inflows Of Resources And Net Position</b>					
<b>Current Liabilities</b>					
0400 Due to Other Funds	72,952			72,952	
0411 Due to Other Governments	10,466			10,466	
0413 Due to Component Unit					
0420 Accounts Payable	5,141			5,141	
0430 Contracts Payable					
0440 Current Portion of Long-Term Debt					
0450 Short-Term Payables					
0461 Accrued Salaries and Benefits					
0462 Payroll Deductions and Withholding					
0480 Unearned Revenues					
0490 Other Current Liabilities					
<b>Total Current Liabilities</b>	<b>\$88,559</b>			<b>\$88,559</b>	
<b>Noncurrent Liabilities</b>					
0510 Bonds Payable					
0520 Extended-Term Financing Agreements Payable					
0530 Lease-Purchase Obligations					
0540 Accumulated Compensated Absences					
0550 Authority Lease Obligations					
0560 Other Post-Employment Benefits (OPEB)	743,709			743,709	
0570 Net Pension Liability					
0599 Other Noncurrent Liabilities					
<b>Total Noncurrent Liabilities</b>	<b>\$743,709</b>			<b>\$743,709</b>	
<b>Total Liabilities</b>	<b>\$832,268</b>			<b>\$832,268</b>	
0950 Deferred Inflows of Resources	44,222			44,222	
<b>Net Position</b>					
0791 Net Investment in Capital Assets	17,401			17,401	
0008 Restricted Net Position (0792 – 0798)					
0799 Unrestricted Net Position	(671,401)			(671,401)	
<b>Total Net Position</b>	<b>(\$654,000)</b>			<b>(\$654,000)</b>	
<b>Total Liabilities And Deferred Inflows Of Resources And Net Position</b>	<b>\$222,490</b>			<b>\$222,490</b>	

Amounts Expressed in Whole Dollars	<u>Food Service</u> <u>(51)</u>	<u>Child Care Operations</u> <u>(52)</u>	<u>Other Enterprise</u> <u>(58)</u>	<u>TOTAL</u>	<u>Internal Service</u> <u>(60)</u>
<b>Operating Revenues</b>					
6600 Food Service Revenue	284,516			284,516	
0071 Charges for Services					
0072 Other Operating Revenue					
<b>Total Operating Revenues</b>	<b>\$284,516</b>			<b>\$284,516</b>	
<b>Operating Expenses</b>					
100 Personnel Services – Salaries	355,941			355,941	
200 Personnel Services – Employee Benefits					
300 Purchased Professional and Technical Services					
400 Purchased Property Services					
500 Other Purchased Services	144,553			144,553	
600 Supplies	266,065			266,065	
740 Depreciation	2,012			2,012	
810 Dues and Fees					
890 Miscellaneous Expenditures	45			45	
<b>Total Operating Expenses</b>	<b>\$768,616</b>			<b>\$768,616</b>	
<b>Operating Income (Loss)</b>	<b>(\$484,100)</b>			<b>(\$484,100)</b>	
<b>Non Operating Revenues (Expenses)</b>					
6500 Earnings on Investments	3,795			3,795	
6920 Contributions and Donations from Private Sources	48,880			48,880	
6930 Gains or Losses on Sale of Fixed Assets					
6991 Refunds of a Prior Year Expenditure					
7000 Revenue from State Sources	65,358			65,358	
8000 Revenue from Federal Sources	353,901			353,901	
9990 Insurance Recoveries					
820 Claims and Judgments Against the LEA					
830 Interest					
<b>TOTAL Non Operating Revenues (Expenses)</b>	<b>\$471,934</b>			<b>\$471,934</b>	
<b>Income (Loss) Before Contributions And Transfers</b>	<b>(\$12,166)</b>			<b>(\$12,166)</b>	

Amounts Expressed in Whole Dollars	<u>Food Service</u> <u>(51)</u>	<u>Child Care Operations</u> <u>(52)</u>	<u>Other Enterprise</u> <u>(58)</u>	<u>TOTAL</u>	<u>Internal Service</u> <u>(60)</u>
<b>Contributions, Transfers, and Special and Extraordinary Items</b>					
5200 Interfund Transfers – Out					
5300 Transfers Out to Component Units/Primary Governments					
5520 Special Items – Losses					
5530 Extraordinary Items – Losses					
9300 Interfund Transfers - IN					
9500 Capital Contributions					
9700 Transfers IN From Component Units/Primary Governments					
9920 Special Items – Gains					
9930 Extraordinary Items – Gains					
<b>Change In Net Position</b>	<b>(\$12,166)</b>			<b>(\$12,166)</b>	
0002 Net Position - Beginning of Fiscal Year	(641,834)			(641,834)	
0003 Accounting Changes / Residual Equity Transfers					
<b>Net Position - End Of Year</b>	<b>(\$654,000)</b>			<b>(\$654,000)</b>	



LEA : 111317503      Southern Huntingdon County SD

Printed 12/10/2019 2:56:20 PM

Amounts Expressed in Whole Dollars	<u>Food Service</u> <u>(51)</u>	<u>Child Care Operations</u> <u>(52)</u>	<u>Other Enterprise</u> <u>(58)</u>	<u>TOTAL</u>	<u>Internal Service(60)</u>
<b>Cash Flows From Operating Activities</b>					
0011 Cash Receipts From Users	275,643			275,643	
0012 Cash Receipts From Assessments Made to Other Funds					
0013 Cash Receipts From Earnings on Investments					
0014 Cash Receipts From Other Operating Revenue					
0015 Cash Payments To Employees For Services	358,026			358,026	
0016 Cash Payments For Insurance Claims					
0017 Cash Payments To Suppliers For Goods and Services	356,816			356,816	
0018 Cash Payments For Other Operating Expenses					
<b>Net Cash Provided By (Used For) Operating Activities</b>	<b>(\$439,199)</b>			<b>(\$439,199)</b>	
<b>Cash Flows From Non-Capital Financing Activities</b>					
0021 Receipts From Local Sources - 6000					
0022 Receipts From State Sources - 7000	65,358			65,358	
0023 Receipts From Federal Sources -8000	353,901			353,901	
0024 Notes and Loans Received (Repaid)					
0025 Interest Paid on Notes/Loans - 5100-830					
0026 Operating Transfers In (Out)/Residual Equity Trans					
0027 Operating Transfers In (Out) Primary Government / Comp Unit					
0028 Receipts From Refund of Prior Year Expenditures - 6991					
0029 Special and Extraordinary Gains (losses)					
0030 Receipts from Insurance Recoveries -9990					
<b>Net Cash Prov By (Used for) Non-Capital Financing Activities</b>	<b>\$419,259</b>			<b>\$419,259</b>	
<b>Cash Flows From Capital and Related Financing Activities</b>					
0031 Payments For Fac Acq, Const, and Imp - 4000					
0032 Gain / (Loss) on Sale of Fixed Assets - 6930					
0033 Proceeds From Extended Term Financing - 9200					
0034 Principal Paid on Financing Agreements					
0035 Interest Paid on Financing Agreements - 5100-830					
0036 (Inc) Dec in Contributed Capital					
<b>Net Cash Prov By (Used for) Capital and Related Financing Activities</b>					
<b>Cash Flows From Investing Activities</b>					
0041 Earnings on Investments - 6500	3,795			3,795	
0042 Purchase of Inv Securities / Deposits to Inv Pools	(782)			(782)	
0043 Receipts From Investment Pool Withdrawals					
0044 Proceeds from Sale and Maturity of Inv Securities					

LEA : 111317503      Southern Huntingdon County SD

Printed 12/10/2019 2:56:20 PM

0045   Loans Received (Paid)

Net Cash Prov By (Used for) Investing Activities	\$3,013	\$3,013
--	---------	---------

LEA : 111317503     Southern Huntingdon County SD

Printed 12/10/2019 2:56:20 PM

	<u>Food Service</u> <u>(51)</u>	<u>Child Care Operations</u> <u>(52)</u>	<u>Other Enterprise</u> <u>(58)</u>	<u>TOTAL</u>	<u>Internal Service</u> <u>(60)</u>
<b>Net Increase (Decrease) in Cash Flows</b>	<b>(16,927)</b>			<b>(16,927)</b>	
0004 Cash and Cash Equivalents Beginning of Year	31,439			31,439	
<b>Cash and Cash Equivalents at Year End</b>	<b>\$14,512</b>			<b>\$14,512</b>	
<hr/>					
<b>Reconciliation of Operating Income (Loss) To Net Cash Provided by (Used For) Operating Activities</b>					
0005 Operating Income (Loss) per REP	(484,100)			(484,100)	
<b>Adjustments</b>					
0051 Depreciation and Net Amortization	2,012			2,012	
0052 Provision for Uncollectible Accounts					
0053 Other Adjustments	48,880			48,880	
<b>Effect of Changes in Assets, Liabilities, Deferred Outflows and Deferred Inflows</b>					
0054 (Inc) Dec In Accounts Receivable (0120-0150)	(11,129)			(11,129)	
0055 Advances to Other Funds (0160)					
0056 (Inc) Dec in Inventories (0170)	6,596			6,596	
0057 (Inc) Dec in Prepaid Expenses (0180)					
0058 (Inc) Dec in Other Current or Noncurrent Assets					
0064 Deferred Outflows (0910)	35,000			35,000	
0059 Inc (Dec) in Accounts Payable (0400-0450)	7,397			7,397	
0060 Inc (Dec) in Accrued Salaries/Benefits (0461)					
0065 Inc (Dec) in Net Pension Liabilities (0570)	(47,000)			(47,000)	
0066 Inc (Dec) in Other Postemp Benefit Oblig (0560)	(1,085)			(1,085)	
0061 Inc (Dec) in Payroll Deductions/Withholding (0462)					
0062 Inc (Dec) in Unearned Revenue (0480)	(6,770)			(6,770)	
0063 Inc (Dec) in Other Current or Noncurrent Liabilities					
0067 Deferred Inflows (0950)	11,000			11,000	
<b>Total Adjustments</b>	<b>\$44,901</b>			<b>\$44,901</b>	
<b>Cash Provided By (Used for) Total</b>	<b>(\$439,199)</b>			<b>(\$439,199)</b>	

COMBINED STATEMENT OF CASH FLOWS  
SCHEDULE OF NONCASH INVESTING, CAPITAL, AND FINANCING ACTIVITIES

Explanation of Transaction and Balance Sheet Effect	Amount
Total	

LEA : 111317503     Southern Huntingdon County SD

Printed 12/10/2019 2:56:22 PM

Amounts Expressed in Whole Dollars	<u>Private Purpose Trust</u> <u>(71)</u>	<u>Investment Trust</u> <u>(72)</u>	<u>Pension Trust</u> <u>(73)</u>	<u>Activity</u> <u>(81)</u>
<b>Assets And Deferred Outflows Of Resources</b>				
<b>Assets</b>				
0100 Cash and Cash Equivalents	30,591			83,727
0110 Investments	8,746			
0130 Due From Other Funds				
0147 Due from Component Unit				
0150 Other Receivables				
0170 Inventories				
0180 Prepaid Expenses (Expenditures)				
0190 Other Current Assets				
0220 Buildings and Building Improvements (Net)				
0230 Machinery, Equipment and Furniture (Net)				
<b>Total Assets</b>	<b>\$39,337</b>			<b>\$83,727</b>
0910 Deferred Outflows of Resources				
<b>Total Assets And Deferred Outflows Of Resources</b>	<b>\$39,337</b>			<b>\$83,727</b>

LEA : 111317503     Southern Huntingdon County SD

Printed 12/10/2019 2:56:22 PM

Amounts Expressed in Whole Dollars	Other Agency (89)	Discrete Component Units (98)	Discrete Component Units (99)	Total Fiduciary Funds
<b>Assets And Deferred Outflows Of Resources</b>				
<b>Assets</b>				
0100 Cash and Cash Equivalents				114,318
0110 Investments				8,746
0130 Due From Other Funds				
0147 Due from Component Unit				
0150 Other Receivables				
0170 Inventories				
0180 Prepaid Expenses (Expenditures)				
0190 Other Current Assets				
0220 Buildings and Building Improvements (Net)				
0230 Machinery, Equipment and Furniture (Net)				
<b>Total Assets</b>				<b>\$123,064</b>
0910 Deferred Outflows of Resources				
<b>Total Assets And Deferred Outflows Of Resources</b>				<b>\$123,064</b>

LEA : 111317503     Southern Huntingdon County SD

Printed 12/10/2019 2:56:22 PM

Amounts Expressed in Whole Dollars	<u>Private Purpose Trust</u> <u>(71)</u>	<u>Investment Trust</u> <u>(72)</u>	<u>Pension Trust</u> <u>(73)</u>	<u>Activity</u> <u>(81)</u>
<b>Liabilities, Deferred Inflows Of Resources And Net Position</b>				
<b>Liabilities</b>				
0400 Due to Other Funds				83,727
0411 Due to Other Governments				
0412 Due to Primary Government				
0413 Due to Component Unit				
0420 Accounts Payable				
0430 Contracts Payable				
0450 Short-Term Payables				
0461 Accrued Salaries and Benefits				
0462 Payroll Deductions and Withholding				
0480 Unearned Revenues				
0490 Other Current Liabilities				
<b>Total Liabilities</b>				<b>\$83,727</b>
0950 Deferred Inflows of Resources				
<b>Net Position</b>				
0791 Net Investment in Capital Assets				
0009 Restricted Net Position (0792 – 0798)	39,337			
0799 Unrestricted Net Position				
<b>Total Net Position</b>	<b>\$39,337</b>			
<b>Total Liabilities, Deferred Inflows Of Resources And Net Position</b>	<b>\$39,337</b>			<b>\$83,727</b>

LEA : 111317503     Southern Huntingdon County SD

Printed 12/10/2019 2:56:22 PM

Amounts Expressed in Whole Dollars		<u>Other Agency</u> <u>(89)</u>	<u>Discrete Component Units</u> <u>(98)</u>	<u>Discrete Component Units</u> <u>(99)</u>	<u>Total Fiduciary Funds</u>
<b>Liabilities, Deferred Inflows Of Resources And Net Position</b>					
<b>Liabilities</b>					
0400	Due to Other Funds				83,727
0411	Due to Other Governments				
0412	Due to Primary Government				
0413	Due to Component Unit				
0420	Accounts Payable				
0430	Contracts Payable				
0450	Short-Term Payables				
0461	Accrued Salaries and Benefits				
0462	Payroll Deductions and Withholding				
0480	Unearned Revenues				
0490	Other Current Liabilities				
<b>Total Liabilities</b>					<b>\$83,727</b>
0950	Deferred Inflows of Resources				
<b>Net Position</b>					
0791	Net Investment in Capital Assets				
0009	Restricted Net Position (0792 – 0798)				39,337
0799	Unrestricted Net Position				
<b>Total Net Position</b>					<b>\$39,337</b>
<b>Total Liabilities, Deferred Inflows Of Resources And Net Position</b>					<b>\$123,064</b>



LEA : 111317503     Southern Huntingdon County SD

Printed 12/10/2019 2:56:24 PM

Amounts Expressed in Whole Dollars	<u>Private Purpose Trust</u> <u>(71)</u>	<u>Investment Trust</u> <u>(72)</u>	<u>Pension Trust</u> <u>(73)</u>	<u>Discrete Component</u> <u>Units</u> <u>(98)</u>	<u>Discrete Component</u> <u>Units</u> <u>(99)</u>	<u>Total Fiduciary</u> <u>Funds</u>
<b>Additions</b>						
0091 Gifts and Contributions	3,629					3,629
0092 Other Additions	141					141
<b>Deductions</b>						
0093 Scholarships Awarded	5,300					5,300
0094 Other Deductions						
<b>Change In Net Position</b>	<b>(\$1,530)</b>					<b>(\$1,530)</b>
0006 Net Position – Beginning of Fiscal Year	40,867					40,867
0007 Net Position Held in Trust for Pension Benefits						
<b>Net Position - End of Fiscal Year</b>	<b>\$39,337</b>					<b>\$39,337</b>

	Revenue Reported In Current Year	Current Year Tax Accrual	Prior Year Tax Accrual	Taxes Collected In Current Year
<b>Revenue from Local Sources</b>				
6111 Current Real Estate Taxes	3,655,683.51			3,655,683.51
6113 Public Utility Realty Taxes	5,658.44			5,658.44
6114 Payments in Lieu of Current Taxes - State / Local	27,835.95			27,835.95
6120 Current Per Capita Taxes, Section 679	14,732.85			14,732.85
6141 Current Act 511 Per Capita Taxes	14,732.85			14,732.85
6151 Current Act 511 Earned Income Taxes	731,605.60			731,605.60
6153 Current Act 511 Real Estate Transfer Taxes	85,525.37			85,525.37
6411 Delinquent Real Estate Taxes	459,737.45			459,737.45
6420 Delinquent Per Capita Taxes, Section 679	3,083.65			3,083.65
6440 Delinquent Local Enabling Taxes - Flat Rate Assessments	3,083.68			3,083.68
6500 Earnings on Investments	181,461.52			
6700 Revenues from LEA Activities	55,602.00			
6810 Revenue from Local Governmental Units	85,257.57			
6831 Federal Revenue Received from Other Pennsylvania Public LEAs	2,502.00			
6832 Federal IDEA Revenue Received as Pass Through	234,898.17			
6910 Rentals	1,680.00			
6942 Summer School Tuition	2,500.00			
6944 Receipts from Other LEAs in Pennsylvania - Education	35,876.52			
6991 Refunds of a Prior Year Expenditure	68,984.72			
6992 Energy Efficiency Revenues and Incentives	1,536.28			
6999 Other Revenues Not Specified Above	20,271.02			
<b>TOTAL Revenue from Local Sources</b>	<b>\$5,692,249.15</b>			<b>\$5,001,679.35</b>

	Revenue Reported In Current Year			
<b>Revenue from State Sources</b>				
7110 Basic Education Funding	6,922,517.10			
7160 Tuition for Orphans Subsidy	70,873.01			
7220 Vocational Education	29,380.68			
7271 Special Education funds for School-Aged Pupils	770,108.48			
7311 Pupil Transportation Subsidy	982,367.86			
7320 Rental and Sinking Fund Payments / Building Reimbursement Subsidy	260,390.10			
7330 Health Services (Medical, Dental, Nurse, Act 25)	21,484.83			
7340 State Property Tax Reduction Allocation	285,842.61			
7361 School Safety and Security Grants	25,000.00			
7505 Ready to Learn Block Grant	238,273.00			
7509 Supplemental Equipment Grants	4,504.25			
7810 State Share of Social Security and Medicare Taxes	302,532.04			
7820 State Share of Retirement Contributions	1,358,368.37			
<b>TOTAL Revenue from State Sources</b>	<b>\$11,271,642.33</b>			

	Revenue Reported In Current Year			
<b><u>Revenue from Federal Sources</u></b>				
8514 NCLB, Title I - Improving the Academic Achievement of the Disadvantaged	361,685.16			
8515 NCLB, Title II - Preparing, Training and Recruiting High Quality Teachers and Principals	67,369.53			
8517 NCLB, Title IV - 21St Century Schools	19,537.95			
8820 Medical Assistance Reimbursement for Administrative Claiming (Quarterly) Program	2,943.22			
<b>TOTAL Revenue from Federal Sources</b>	<b>\$451,535.86</b>			
<b>TOTAL FROM ALL SOURCES</b>	<b>\$17,415,427.34</b>			<b>\$5,001,679.35</b>

Revenue from Local Sources	5,692,249.15
Revenue from State Sources	11,271,642.33
Revenue from Federal Sources	451,535.86
Other Financing Sources	
<b>TOTAL FROM ALL SOURCES</b>	<b>\$17,415,427.34</b>

LEA : 111317503     Southern Huntingdon County SD

Printed 12/10/2019 2:56:32 PM

General Fund (10)

1000 Instruction	Total
100 <u>Personnel Services – Salaries</u>	
100 Personnel Services – Salaries	4,932,281.82
<b>Total Personnel Services – Salaries</b>	<b>\$4,932,281.82</b>
200 <u>Personnel Services – Employee Benefits</u>	
210 Group Insurance – Contracted Provider	976,968.72
220 Social Security Contributions	360,734.17
230 PSERS Retirement Contributions	1,587,032.78
299 All Other Employee Benefits	18,337.50
<b>Total Personnel Services – Employee Benefits</b>	<b>\$2,943,073.17</b>
300 <u>Purchased Professional and Technical Services</u>	
322 Professional Educational Services – Ius	93,751.92
329 Professional Educational Services – Other	44,091.23
<b>Total Purchased Professional and Technical Services</b>	<b>\$137,843.15</b>
400 <u>Purchased Property Services</u>	
430 Repairs and Maintenance Services	2,018.90
440 Rentals	38,700.00
<b>Total Purchased Property Services</b>	<b>\$40,718.90</b>
500 <u>Other Purchased Services</u>	
530 Communications	36,096.00
561 Tuition To Other School Districts Within the State	845,066.19
562 Tuition To Pennsylvania Charter Schools	303,037.81
564 Tuition To Career and Technology Centers	557,186.04
567 Tuition To Approved Private Schools (APS) and PA Chartered Schools for the Deaf and Blind	45,615.22
568 Tuition To Private Residential Rehabilitative Institutions (PRRI) [In-State] and Detention Centers	38,976.26
569 Tuition – Other	27,054.12
580 Travel	5,960.87
594 IU Payment By Withholding for Institutionalized Children’s Programs – Special Classes	29,250.60
<b>Total Other Purchased Services</b>	<b>\$1,888,243.11</b>
600 <u>Supplies</u>	
610 General Supplies	123,575.68
640 Books and Periodicals	90,497.04
<b>Total Supplies</b>	<b>\$214,072.72</b>
700 <u>Property</u>	
752 Capital Equipment – Original and Additional	37,391.65
762 Capitalized Equipment - Replacement	59.25
<b>Total Property</b>	<b>\$37,450.90</b>
800 <u>Other Objects</u>	
810 Dues and Fees	5,180.80
<b>Total Other Objects</b>	<b>\$5,180.80</b>
<b>Total 1000 Instruction</b>	<b>\$10,198,864.57</b>

LEA : 111317503     Southern Huntingdon County SD

Printed 12/10/2019 2:56:32 PM

<b>General Fund (10)</b>				
<b>1100 Regular Programs – Elementary / Secondary</b>	<b><u>Elementary</u></b>	<b><u>Secondary</u></b>	<b><u>Federal</u></b>	<b><u>Total</u></b>
<b>100 <u>Personnel Services – Salaries</u></b>				
100 Personnel Services – Salaries	1,515,427.67	2,001,988.84	294,531.40	3,811,947.91
<b>Total Personnel Services – Salaries</b>	<b>\$1,515,427.67</b>	<b>\$2,001,988.84</b>	<b>\$294,531.40</b>	<b>\$3,811,947.91</b>
<b>200 <u>Personnel Services – Employee Benefits</u></b>				
210 Group Insurance – Contracted Provider	373,910.93	406,220.56	57,489.05	837,620.54
220 Social Security Contributions	110,307.39	146,268.59	21,006.26	277,582.24
230 PSERS Retirement Contributions	486,748.75	639,055.94	94,435.53	1,220,240.22
299 All Other Employee Benefits		18,337.50		18,337.50
<b>Total Personnel Services – Employee Benefits</b>	<b>\$970,967.07</b>	<b>\$1,209,882.59</b>	<b>\$172,930.84</b>	<b>\$2,353,780.50</b>
<b>300 <u>Purchased Professional and Technical Services</u></b>				
329 Professional Educational Services – Other	17,452.30	17,444.00	1,143.93	36,040.23
<b>Total Purchased Professional and Technical Services</b>	<b>\$17,452.30</b>	<b>\$17,444.00</b>	<b>\$1,143.93</b>	<b>\$36,040.23</b>
<b>400 <u>Purchased Property Services</u></b>				
430 Repairs and Maintenance Services		2,018.90		2,018.90
440 Rentals	15,480.00	23,220.00		38,700.00
<b>Total Purchased Property Services</b>	<b>\$15,480.00</b>	<b>\$25,238.90</b>		<b>\$40,718.90</b>
<b>500 <u>Other Purchased Services</u></b>				
530 Communications		36,096.00		36,096.00
561 Tuition To Other School Districts Within the State		32,975.27		32,975.27
562 Tuition To Pennsylvania Charter Schools	1,894.18	159,677.30		161,571.48
568 Tuition To Private Residential Rehabilitative Institutions (PRRI) [In-State] and Detention Centers	15,783.55	17,668.41		33,451.96
569 Tuition – Other		5,071.88		5,071.88
580 Travel	458.59	1,964.39		2,422.98
<b>Total Other Purchased Services</b>	<b>\$18,136.32</b>	<b>\$253,453.25</b>		<b>\$271,589.57</b>
<b>600 <u>Supplies</u></b>				
610 General Supplies	15,292.20	81,831.34	16,057.06	113,180.60
640 Books and Periodicals	19,843.03	58,682.93		78,525.96
<b>Total Supplies</b>	<b>\$35,135.23</b>	<b>\$140,514.27</b>	<b>\$16,057.06</b>	<b>\$191,706.56</b>
<b>700 <u>Property</u></b>				
752 Capital Equipment – Original and Additional	347.29			347.29
762 Capitalized Equipment - Replacement	59.25			59.25
<b>Total Property</b>	<b>\$406.54</b>			<b>\$406.54</b>
<b>800 <u>Other Objects</u></b>				
810 Dues and Fees	144.00	4,766.80		4,910.80
<b>Total Other Objects</b>	<b>\$144.00</b>	<b>\$4,766.80</b>		<b>\$4,910.80</b>
<b>Total 1100 Regular Programs – Elementary / Secondary</b>	<b>\$2,573,149.13</b>	<b>\$3,653,288.65</b>	<b>\$484,663.23</b>	<b>\$6,711,101.01</b>

LEA : 111317503     Southern Huntingdon County SD

Printed 12/10/2019 2:56:32 PM

<b>General Fund (10)</b>				
<b>1110 Regular Programs</b>	<u>Elementary</u>	<u>Secondary</u>	<u>Federal</u>	<u>Total</u>
<b>100 <u>Personnel Services – Salaries</u></b>				
100 Personnel Services – Salaries	1,515,427.67	2,001,988.84		3,517,416.51
<b>Total Personnel Services – Salaries</b>	<b>\$1,515,427.67</b>	<b>\$2,001,988.84</b>		<b>\$3,517,416.51</b>
<b>200 <u>Personnel Services – Employee Benefits</u></b>				
210 Group Insurance – Contracted Provider	373,910.93	406,220.56		780,131.49
220 Social Security Contributions	110,307.39	146,268.59		256,575.98
230 PSERS Retirement Contributions	486,748.75	639,055.94		1,125,804.69
299 All Other Employee Benefits		18,337.50		18,337.50
<b>Total Personnel Services – Employee Benefits</b>	<b>\$970,967.07</b>	<b>\$1,209,882.59</b>		<b>\$2,180,849.66</b>
<b>300 <u>Purchased Professional and Technical Services</u></b>				
329 Professional Educational Services – Other	17,452.30	17,444.00		34,896.30
<b>Total Purchased Professional and Technical Services</b>	<b>\$17,452.30</b>	<b>\$17,444.00</b>		<b>\$34,896.30</b>
<b>400 <u>Purchased Property Services</u></b>				
430 Repairs and Maintenance Services		2,018.90		2,018.90
440 Rentals	15,480.00	23,220.00		38,700.00
<b>Total Purchased Property Services</b>	<b>\$15,480.00</b>	<b>\$25,238.90</b>		<b>\$40,718.90</b>
<b>500 <u>Other Purchased Services</u></b>				
530 Communications		36,096.00		36,096.00
561 Tuition To Other School Districts Within the State		32,975.27		32,975.27
562 Tuition To Pennsylvania Charter Schools	1,894.18	159,677.30		161,571.48
568 Tuition To Private Residential Rehabilitative Institutions (PRRI) [In-State] and Detention Centers	15,783.55	17,668.41		33,451.96
569 Tuition – Other		5,071.88		5,071.88
580 Travel	458.59	1,964.39		2,422.98
<b>Total Other Purchased Services</b>	<b>\$18,136.32</b>	<b>\$253,453.25</b>		<b>\$271,589.57</b>
<b>600 <u>Supplies</u></b>				
610 General Supplies	15,292.20	81,831.34		97,123.54
640 Books and Periodicals	19,843.03	58,682.93		78,525.96
<b>Total Supplies</b>	<b>\$35,135.23</b>	<b>\$140,514.27</b>		<b>\$175,649.50</b>
<b>700 <u>Property</u></b>				
752 Capital Equipment – Original and Additional	347.29			347.29
762 Capitalized Equipment - Replacement	59.25			59.25
<b>Total Property</b>	<b>\$406.54</b>			<b>\$406.54</b>
<b>800 <u>Other Objects</u></b>				
810 Dues and Fees	144.00	4,766.80		4,910.80
<b>Total Other Objects</b>	<b>\$144.00</b>	<b>\$4,766.80</b>		<b>\$4,910.80</b>
<b>Total 1110 Regular Programs</b>	<b>\$2,573,149.13</b>	<b>\$3,653,288.65</b>		<b>\$6,226,437.78</b>



General Fund (10)

1190 Federally-Funded Regular Programs	<u>Elementary</u>	<u>Secondary</u>	<u>Federal</u>	<u>Total</u>
<b>100 <u>Personnel Services – Salaries</u></b>				
100 Personnel Services – Salaries			294,531.40	294,531.40
<b>Total Personnel Services – Salaries</b>			<b>\$294,531.40</b>	<b>\$294,531.40</b>
<b>200 <u>Personnel Services – Employee Benefits</u></b>				
210 Group Insurance – Contracted Provider			57,489.05	57,489.05
220 Social Security Contributions			21,006.26	21,006.26
230 PSERS Retirement Contributions			94,435.53	94,435.53
<b>Total Personnel Services – Employee Benefits</b>			<b>\$172,930.84</b>	<b>\$172,930.84</b>
<b>300 <u>Purchased Professional and Technical Services</u></b>				
329 Professional Educational Services – Other			1,143.93	1,143.93
<b>Total Purchased Professional and Technical Services</b>			<b>\$1,143.93</b>	<b>\$1,143.93</b>
<b>600 <u>Supplies</u></b>				
610 General Supplies			16,057.06	16,057.06
<b>Total Supplies</b>			<b>\$16,057.06</b>	<b>\$16,057.06</b>
<b>Total 1190 Federally-Funded Regular Programs</b>			<b>\$484,663.23</b>	<b>\$484,663.23</b>

LEA : 111317503     Southern Huntingdon County SD

Printed 12/10/2019 2:56:32 PM

General Fund (10)

1200 Special Programs – Elementary / Secondary	Elementary	Secondary	Federal	Total
<b>100 Personnel Services – Salaries</b>				
100 Personnel Services – Salaries	479,539.57	329,683.53	77,984.57	887,207.67
<b>Total Personnel Services – Salaries</b>	<b>\$479,539.57</b>	<b>\$329,683.53</b>	<b>\$77,984.57</b>	<b>\$887,207.67</b>
<b>200 Personnel Services – Employee Benefits</b>				
210 Group Insurance – Contracted Provider	61,622.02	46,726.37	262.02	108,610.41
220 Social Security Contributions	36,097.28	24,277.47	5,936.35	66,311.10
230 PSERS Retirement Contributions	159,962.46	108,353.30	25,928.27	294,244.03
<b>Total Personnel Services – Employee Benefits</b>	<b>\$257,681.76</b>	<b>\$179,357.14</b>	<b>\$32,126.64</b>	<b>\$469,165.54</b>
<b>300 Purchased Professional and Technical Services</b>				
322 Professional Educational Services – Ius	73,761.61	17,488.31	2,502.00	93,751.92
329 Professional Educational Services – Other			8,051.00	8,051.00
<b>Total Purchased Professional and Technical Services</b>	<b>\$73,761.61</b>	<b>\$17,488.31</b>	<b>\$10,553.00</b>	<b>\$101,802.92</b>
<b>500 Other Purchased Services</b>				
561 Tuition To Other School Districts Within the State	229,056.94	296,238.99	161,669.99	686,965.92
562 Tuition To Pennsylvania Charter Schools	7,823.97	133,642.36		141,466.33
567 Tuition To Approved Private Schools (APS) and PA Chartered Schools for the Deaf and Blind	45,615.22			45,615.22
568 Tuition To Private Residential Rehabilitative Institutions (PRRI) [In-State] and Detention Centers		5,524.30		5,524.30
569 Tuition – Other	21,982.24			21,982.24
580 Travel	919.85			919.85
594 IU Payment By Withholding for Institutionalized Children's Programs – Special Classes	146.25	29,104.35		29,250.60
<b>Total Other Purchased Services</b>	<b>\$305,544.47</b>	<b>\$464,510.00</b>	<b>\$161,669.99</b>	<b>\$931,724.46</b>
<b>600 Supplies</b>				
610 General Supplies	2,235.57	3,889.45	410.00	6,535.02
640 Books and Periodicals	8,849.38	1,657.70		10,507.08
<b>Total Supplies</b>	<b>\$11,084.95</b>	<b>\$5,547.15</b>	<b>\$410.00</b>	<b>\$17,042.10</b>
<b>Total 1200 Special Programs – Elementary / Secondary</b>	<b>\$1,127,612.36</b>	<b>\$996,586.13</b>	<b>\$282,744.20</b>	<b>\$2,406,942.69</b>

LEA : 111317503     Southern Huntingdon County SD

Printed 12/10/2019 2:56:32 PM

General Fund (10)

1210 Life Skills Support

	<u>Elementary</u>	<u>Secondary</u>	<u>Federal</u>	<u>Total</u>
<b>100 <u>Personnel Services – Salaries</u></b>				
100 Personnel Services – Salaries	50,006.57	46,055.31		96,061.88
<b>Total Personnel Services – Salaries</b>	<b>\$50,006.57</b>	<b>\$46,055.31</b>		<b>\$96,061.88</b>
<b>200 <u>Personnel Services – Employee Benefits</u></b>				
210 Group Insurance – Contracted Provider	347.79	7,978.28		8,326.07
220 Social Security Contributions	3,748.68	3,259.63		7,008.31
230 PSERS Retirement Contributions	16,287.61	14,640.71		30,928.32
<b>Total Personnel Services – Employee Benefits</b>	<b>\$20,384.08</b>	<b>\$25,878.62</b>		<b>\$46,262.70</b>
<b>Total 1210 Life Skills Support</b>	<b>\$70,390.65</b>	<b>\$71,933.93</b>		<b>\$142,324.58</b>

LEA : 111317503     Southern Huntingdon County SD

Printed 12/10/2019 2:56:32 PM

General Fund (10)

1220 Sensory Support

	<u>Elementary</u>	<u>Secondary</u>	<u>Federal</u>	<u>Total</u>
<b>100 <u>Personnel Services – Salaries</u></b>				
100 Personnel Services – Salaries	31,185.14	31,029.86		62,215.00
<b>Total Personnel Services – Salaries</b>	<b>\$31,185.14</b>	<b>\$31,029.86</b>		<b>\$62,215.00</b>
<b>200 <u>Personnel Services – Employee Benefits</u></b>				
210 Group Insurance – Contracted Provider		79.20		79.20
220 Social Security Contributions	2,385.67	2,373.73		4,759.40
230 PSERS Retirement Contributions	10,425.17	10,373.18		20,798.35
<b>Total Personnel Services – Employee Benefits</b>	<b>\$12,810.84</b>	<b>\$12,826.11</b>		<b>\$25,636.95</b>
<b>Total 1220 Sensory Support</b>	<b>\$43,995.98</b>	<b>\$43,855.97</b>		<b>\$87,851.95</b>

LEA : 111317503     Southern Huntingdon County SD

Printed 12/10/2019 2:56:32 PM

General Fund (10)

1230 Emotional Support

	<u>Elementary</u>	<u>Secondary</u>	<u>Federal</u>	<u>Total</u>
<b>100 <u>Personnel Services – Salaries</u></b>				
100 Personnel Services – Salaries	40,668.75	38,375.91		79,044.66
<b>Total Personnel Services – Salaries</b>	<b>\$40,668.75</b>	<b>\$38,375.91</b>		<b>\$79,044.66</b>
<b>200 <u>Personnel Services – Employee Benefits</u></b>				
210 Group Insurance – Contracted Provider	5,004.12	4,967.68		9,971.80
220 Social Security Contributions	3,069.55	2,846.17		5,915.72
230 PSERS Retirement Contributions	13,608.50	12,839.00		26,447.50
<b>Total Personnel Services – Employee Benefits</b>	<b>\$21,682.17</b>	<b>\$20,652.85</b>		<b>\$42,335.02</b>
<b>Total 1230 Emotional Support</b>	<b>\$62,350.92</b>	<b>\$59,028.76</b>		<b>\$121,379.68</b>

LEA : 111317503     Southern Huntingdon County SD

Printed 12/10/2019 2:56:32 PM

General Fund (10)

1240 Academic Support

	Elementary	Secondary	Federal	Total
<b>100 Personnel Services – Salaries</b>				
100 Personnel Services – Salaries	357,242.11	213,709.45	77,984.57	648,936.13
<b>Total Personnel Services – Salaries</b>	<b>\$357,242.11</b>	<b>\$213,709.45</b>	<b>\$77,984.57</b>	<b>\$648,936.13</b>
<b>200 Personnel Services – Employee Benefits</b>				
210 Group Insurance – Contracted Provider	56,270.11	33,701.21	262.02	90,233.34
220 Social Security Contributions	26,860.65	15,758.69	5,936.35	48,555.69
230 PSERS Retirement Contributions	119,495.13	70,328.90	25,928.27	215,752.30
<b>Total Personnel Services – Employee Benefits</b>	<b>\$202,625.89</b>	<b>\$119,788.80</b>	<b>\$32,126.64</b>	<b>\$354,541.33</b>
<b>300 Purchased Professional and Technical Services</b>				
322 Professional Educational Services – Ius	73,761.61	17,488.31	2,502.00	93,751.92
329 Professional Educational Services – Other			8,051.00	8,051.00
<b>Total Purchased Professional and Technical Services</b>	<b>\$73,761.61</b>	<b>\$17,488.31</b>	<b>\$10,553.00</b>	<b>\$101,802.92</b>
<b>500 Other Purchased Services</b>				
561 Tuition To Other School Districts Within the State	229,056.94	296,238.99	161,669.99	686,965.92
562 Tuition To Pennsylvania Charter Schools	7,823.97	133,642.36		141,466.33
568 Tuition To Private Residential Rehabilitative Institutions (PRRI) [In-State] and Detention Centers		5,524.30		5,524.30
569 Tuition – Other	21,982.24			21,982.24
580 Travel	919.85			919.85
<b>Total Other Purchased Services</b>	<b>\$259,783.00</b>	<b>\$435,405.65</b>	<b>\$161,669.99</b>	<b>\$856,858.64</b>
<b>600 Supplies</b>				
610 General Supplies	2,235.57	3,889.45	410.00	6,535.02
640 Books and Periodicals	8,849.38	1,657.70		10,507.08
<b>Total Supplies</b>	<b>\$11,084.95</b>	<b>\$5,547.15</b>	<b>\$410.00</b>	<b>\$17,042.10</b>
<b>Total 1240 Academic Support</b>	<b>\$904,497.56</b>	<b>\$791,939.36</b>	<b>\$282,744.20</b>	<b>\$1,979,181.12</b>

LEA : 111317503     Southern Huntingdon County SD

Printed 12/10/2019 2:56:32 PM

General Fund (10)

1241 Learning Support – Public	Elementary	Secondary	Federal	Total
100 <u>Personnel Services – Salaries</u>				
100 Personnel Services – Salaries	357,242.11	212,475.07	77,984.57	647,701.75
<b>Total Personnel Services – Salaries</b>	<b>\$357,242.11</b>	<b>\$212,475.07</b>	<b>\$77,984.57</b>	<b>\$647,701.75</b>
200 <u>Personnel Services – Employee Benefits</u>				
210 Group Insurance – Contracted Provider	56,270.11	33,682.94	262.02	90,215.07
220 Social Security Contributions	26,860.65	15,664.19	5,936.35	48,461.19
230 PSERS Retirement Contributions	119,495.13	69,915.77	25,928.27	215,339.17
<b>Total Personnel Services – Employee Benefits</b>	<b>\$202,625.89</b>	<b>\$119,262.90</b>	<b>\$32,126.64</b>	<b>\$354,015.43</b>
300 <u>Purchased Professional and Technical Services</u>				
322 Professional Educational Services – Ius	73,761.61	17,488.31	2,502.00	93,751.92
329 Professional Educational Services – Other			8,051.00	8,051.00
<b>Total Purchased Professional and Technical Services</b>	<b>\$73,761.61</b>	<b>\$17,488.31</b>	<b>\$10,553.00</b>	<b>\$101,802.92</b>
500 <u>Other Purchased Services</u>				
561 Tuition To Other School Districts Within the State	229,056.94	296,238.99	161,669.99	686,965.92
562 Tuition To Pennsylvania Charter Schools	7,823.97	133,642.36		141,466.33
568 Tuition To Private Residential Rehabilitative Institutions (PRRI) [In-State] and Detention Centers		5,524.30		5,524.30
569 Tuition – Other	21,982.24			21,982.24
580 Travel	919.85			919.85
<b>Total Other Purchased Services</b>	<b>\$259,783.00</b>	<b>\$435,405.65</b>	<b>\$161,669.99</b>	<b>\$856,858.64</b>
600 <u>Supplies</u>				
610 General Supplies	2,235.57	3,889.45	410.00	6,535.02
640 Books and Periodicals	8,849.38	1,657.70		10,507.08
<b>Total Supplies</b>	<b>\$11,084.95</b>	<b>\$5,547.15</b>	<b>\$410.00</b>	<b>\$17,042.10</b>
<b>Total 1241 Learning Support – Public</b>	<b>\$904,497.56</b>	<b>\$790,179.08</b>	<b>\$282,744.20</b>	<b>\$1,977,420.84</b>

LEA : 111317503     Southern Huntingdon County SD

Printed 12/10/2019 2:56:32 PM

General Fund (10)

1243 Gifted Support

	<u>Elementary</u>	<u>Secondary</u>	<u>Federal</u>	<u>Total</u>
<b>100 <u>Personnel Services – Salaries</u></b>				
100 Personnel Services – Salaries		1,234.38		1,234.38
<b>Total Personnel Services – Salaries</b>		<b>\$1,234.38</b>		<b>\$1,234.38</b>
<b>200 <u>Personnel Services – Employee Benefits</u></b>				
210 Group Insurance – Contracted Provider		18.27		18.27
220 Social Security Contributions		94.50		94.50
230 PSERS Retirement Contributions		413.13		413.13
<b>Total Personnel Services – Employee Benefits</b>		<b>\$525.90</b>		<b>\$525.90</b>
<b>Total 1243 Gifted Support</b>		<b>\$1,760.28</b>		<b>\$1,760.28</b>



LEA : 111317503     Southern Huntingdon County SD

Printed 12/10/2019 2:56:32 PM

General Fund (10)

1290 Special Programs - Other Support	<u>Elementary</u>	<u>Secondary</u>	<u>Federal</u>	<u>Total</u>
<b>100 <u>Personnel Services – Salaries</u></b>				
100 Personnel Services – Salaries	437.00	513.00		950.00
<b>Total Personnel Services – Salaries</b>	<b>\$437.00</b>	<b>\$513.00</b>		<b>\$950.00</b>
<b>200 <u>Personnel Services – Employee Benefits</u></b>				
220 Social Security Contributions	32.73	39.25		71.98
230 PSERS Retirement Contributions	146.05	171.51		317.56
<b>Total Personnel Services – Employee Benefits</b>	<b>\$178.78</b>	<b>\$210.76</b>		<b>\$389.54</b>
<b>500 <u>Other Purchased Services</u></b>				
567 Tuition To Approved Private Schools (APS) and PA Chartered Schools for the Deaf and Blind	45,615.22			45,615.22
594 IU Payment By Withholding for Institutionalized Children’s Programs – Special Classes	146.25	29,104.35		29,250.60
<b>Total Other Purchased Services</b>	<b>\$45,761.47</b>	<b>\$29,104.35</b>		<b>\$74,865.82</b>
<b>Total 1290 Special Programs - Other Support</b>	<b>\$46,377.25</b>	<b>\$29,828.11</b>		<b>\$76,205.36</b>

LEA : 111317503     Southern Huntingdon County SD

Printed 12/10/2019 2:56:32 PM

<b>General Fund (10)</b>				
<b>1300 Vocational Education</b>	<b><u>Elementary</u></b>	<b><u>Secondary</u></b>	<b><u>Federal</u></b>	<b><u>Total</u></b>
<b>100 <u>Personnel Services – Salaries</u></b>				
100 Personnel Services – Salaries		168,500.13		168,500.13
<b>Total Personnel Services – Salaries</b>		<b>\$168,500.13</b>		<b>\$168,500.13</b>
<b>200 <u>Personnel Services – Employee Benefits</u></b>				
210 Group Insurance – Contracted Provider		30,737.77		30,737.77
220 Social Security Contributions		12,004.80		12,004.80
230 PSERS Retirement Contributions		53,586.54		53,586.54
<b>Total Personnel Services – Employee Benefits</b>		<b>\$96,329.11</b>		<b>\$96,329.11</b>
<b>500 <u>Other Purchased Services</u></b>				
564 Tuition To Career and Technology Centers		557,186.04		557,186.04
580 Travel		2,397.30		2,397.30
<b>Total Other Purchased Services</b>		<b>\$559,583.34</b>		<b>\$559,583.34</b>
<b>600 <u>Supplies</u></b>				
610 General Supplies		3,810.95		3,810.95
640 Books and Periodicals		1,464.00		1,464.00
<b>Total Supplies</b>		<b>\$5,274.95</b>		<b>\$5,274.95</b>
<b>700 <u>Property</u></b>				
752 Capital Equipment – Original and Additional		37,044.36		37,044.36
<b>Total Property</b>		<b>\$37,044.36</b>		<b>\$37,044.36</b>
<b>800 <u>Other Objects</u></b>				
810 Dues and Fees		270.00		270.00
<b>Total Other Objects</b>		<b>\$270.00</b>		<b>\$270.00</b>
<b>Total 1300 Vocational Education</b>		<b>\$867,001.89</b>		<b>\$867,001.89</b>

LEA : 111317503     Southern Huntingdon County SD

Printed 12/10/2019 2:56:32 PM

General Fund (10)				
1400 Other Instructional Programs – Elementary / Secondary	<u>Elementary</u>	<u>Secondary</u>	<u>Federal</u>	<u>Total</u>
100 <u>Personnel Services – Salaries</u>				
100 Personnel Services – Salaries	7,001.00	2,070.00	55,555.11	64,626.11
<b>Total Personnel Services – Salaries</b>	<b>\$7,001.00</b>	<b>\$2,070.00</b>	<b>\$55,555.11</b>	<b>\$64,626.11</b>
200 <u>Personnel Services – Employee Benefits</u>				
220 Social Security Contributions	535.59	156.84	4,143.60	4,836.03
230 PSERS Retirement Contributions	2,148.91	545.92	16,267.16	18,961.99
<b>Total Personnel Services – Employee Benefits</b>	<b>\$2,684.50</b>	<b>\$702.76</b>	<b>\$20,410.76</b>	<b>\$23,798.02</b>
500 <u>Other Purchased Services</u>				
561 Tuition To Other School Districts Within the State		125,125.00		125,125.00
580 Travel	42.12	178.62		220.74
<b>Total Other Purchased Services</b>	<b>\$42.12</b>	<b>\$125,303.62</b>		<b>\$125,345.74</b>
600 <u>Supplies</u>				
610 General Supplies			49.11	49.11
<b>Total Supplies</b>			<b>\$49.11</b>	<b>\$49.11</b>
<b>Total 1400 Other Instructional Programs – Elementary / Secondary</b>	<b>\$9,727.62</b>	<b>\$128,076.38</b>	<b>\$76,014.98</b>	<b>\$213,818.98</b>

LEA : 111317503     Southern Huntingdon County SD

Printed 12/10/2019 2:56:32 PM

General Fund (10)

1430 Homebound Instruction	<u>Elementary</u>	<u>Secondary</u>	<u>Federal</u>	<u>Total</u>
<b>100 <u>Personnel Services – Salaries</u></b>				
100 Personnel Services – Salaries	7,001.00	2,070.00		9,071.00
<b>Total Personnel Services – Salaries</b>	<b>\$7,001.00</b>	<b>\$2,070.00</b>		<b>\$9,071.00</b>
<b>200 <u>Personnel Services – Employee Benefits</u></b>				
220 Social Security Contributions	535.59	156.84		692.43
230 PSERS Retirement Contributions	2,148.91	545.92		2,694.83
<b>Total Personnel Services – Employee Benefits</b>	<b>\$2,684.50</b>	<b>\$702.76</b>		<b>\$3,387.26</b>
<b>500 <u>Other Purchased Services</u></b>				
580 Travel	42.12	178.62		220.74
<b>Total Other Purchased Services</b>	<b>\$42.12</b>	<b>\$178.62</b>		<b>\$220.74</b>
<b>Total 1430 Homebound Instruction</b>	<b>\$9,727.62</b>	<b>\$2,951.38</b>		<b>\$12,679.00</b>

LEA : 111317503     Southern Huntingdon County SD

Printed 12/10/2019 2:56:32 PM

General Fund (10)

1440 Alternative Regular Education Programs

<u>Elementary</u>	<u>Secondary</u>	<u>Federal</u>	<u>Total</u>
-------------------	------------------	----------------	--------------

500 Other Purchased Services

561 Tuition To Other School Districts Within the State	125,125.00		125,125.00
--	------------	--	------------

<b>Total Other Purchased Services</b>	<b>\$125,125.00</b>		<b>\$125,125.00</b>
---------------------------------------	---------------------	--	---------------------

<b>Total 1440 Alternative Regular Education Programs</b>	<b>\$125,125.00</b>		<b>\$125,125.00</b>
--	---------------------	--	---------------------

LEA : 111317503     Southern Huntingdon County SD

Printed 12/10/2019 2:56:32 PM

General Fund (10)

1442 Alternative Education Programs

500 Other Purchased Services

	<u>Elementary</u>	<u>Secondary</u>	<u>Federal</u>	<u>Total</u>
561 Tuition To Other School Districts Within the State		125,125.00		125,125.00
<b>Total Other Purchased Services</b>		<b>\$125,125.00</b>		<b>\$125,125.00</b>
<b>Total 1442 Alternative Education Programs</b>		<b>\$125,125.00</b>		<b>\$125,125.00</b>

LEA : 111317503     Southern Huntingdon County SD

Printed 12/10/2019 2:56:32 PM

General Fund (10)

1450 Instructional Programs Outside the Established School Day	<u>Elementary</u>	<u>Secondary</u>	<u>Federal</u>	<u>Total</u>
<b>100 <u>Personnel Services – Salaries</u></b>				
100 Personnel Services – Salaries			55,555.11	55,555.11
<b>Total Personnel Services – Salaries</b>			<b>\$55,555.11</b>	<b>\$55,555.11</b>
<b>200 <u>Personnel Services – Employee Benefits</u></b>				
220 Social Security Contributions			4,143.60	4,143.60
230 PSERS Retirement Contributions			16,267.16	16,267.16
<b>Total Personnel Services – Employee Benefits</b>			<b>\$20,410.76</b>	<b>\$20,410.76</b>
<b>600 <u>Supplies</u></b>				
610 General Supplies			49.11	49.11
<b>Total Supplies</b>			<b>\$49.11</b>	<b>\$49.11</b>
<b>Total 1450 Instructional Programs Outside the Established School Day</b>			<b>\$76,014.98</b>	<b>\$76,014.98</b>

LEA : 111317503     Southern Huntingdon County SD

Printed 12/10/2019 2:56:37 PM

General Fund (10)

2000 Support Services

Total

100	<u>Personnel Services – Salaries</u>	
100	Personnel Services – Salaries	1,624,119.38
Total Personnel Services – Salaries		\$1,624,119.38
200	<u>Personnel Services – Employee Benefits</u>	
210	Group Insurance – Contracted Provider	430,370.82
220	Social Security Contributions	120,276.60
230	PSERS Retirement Contributions	523,145.72
240	Tuition Reimbursement	30,865.60
250	Unemployment Compensation	160.00
Total Personnel Services – Employee Benefits		\$1,104,818.74
300	<u>Purchased Professional and Technical Services</u>	
322	Professional Educational Services – Ius	164,273.75
329	Professional Educational Services – Other	88,060.60
330	Other Professional Services	61,937.47
340	Technical Services	71,347.80
360	Employee Training and Development Services	12,848.80
390	Other Purchased Professional and Technical Services	8,419.80
Total Purchased Professional and Technical Services		\$406,888.22
400	<u>Purchased Property Services</u>	
410	Cleaning Services	27,996.79
420	Utility Services	222,452.93
430	Repairs and Maintenance Services	313,318.47
440	Rentals	2,730.00
Total Purchased Property Services		\$566,498.19
500	<u>Other Purchased Services</u>	
511	Student Transportation Services from Another LEA Within the State	3,000.00
513	Contracted Carriers	1,304,257.26
522	Automotive Liability Insurance	5,765.00
523	General Property and Liability Insurance	43,376.00
529	Other Insurance	120,557.75
530	Communications	35,061.97
549	Other Advertising/Public Relations	4,231.68
550	Printing and Binding	3,919.20
580	Travel	9,614.21
Total Other Purchased Services		\$1,529,783.07
600	<u>Supplies</u>	
610	General Supplies	103,230.34
620	Energy	192,958.54
640	Books and Periodicals	2,030.19
Total Supplies		\$298,219.07
700	<u>Property</u>	
752	Capital Equipment – Original and Additional	61,008.93
762	Capitalized Equipment - Replacement	73,467.99



LEA : 111317503     Southern Huntingdon County SD

Printed 12/10/2019 2:56:37 PM

General Fund (10)

2000 Support Services

		<u>Total</u>
Total Property		\$134,476.92
800 <u>Other Objects</u>		
810 Dues and Fees		16,689.38
Total Other Objects		\$16,689.38
Total 2000 Support Services		\$5,681,492.97

LEA : 111317503     Southern Huntingdon County SD

Printed 12/10/2019 2:56:37 PM

General Fund (10)

2100 Support Services – Students	Elementary	Secondary	Federal	Total
100 <u>Personnel Services – Salaries</u>				
100 Personnel Services – Salaries	40,981.15	229,098.89		270,080.04
<b>Total Personnel Services – Salaries</b>	<b>\$40,981.15</b>	<b>\$229,098.89</b>		<b>\$270,080.04</b>
200 <u>Personnel Services – Employee Benefits</u>				
210 Group Insurance – Contracted Provider	15,035.41	58,085.81		73,121.22
220 Social Security Contributions	3,008.82	17,014.93		20,023.75
230 PSERS Retirement Contributions	13,712.06	76,475.54		90,187.60
<b>Total Personnel Services – Employee Benefits</b>	<b>\$31,756.29</b>	<b>\$151,576.28</b>		<b>\$183,332.57</b>
300 <u>Purchased Professional and Technical Services</u>				
329 Professional Educational Services – Other		1,328.00		1,328.00
<b>Total Purchased Professional and Technical Services</b>		<b>\$1,328.00</b>		<b>\$1,328.00</b>
500 <u>Other Purchased Services</u>				
580 Travel	59.92			59.92
<b>Total Other Purchased Services</b>	<b>\$59.92</b>			<b>\$59.92</b>
600 <u>Supplies</u>				
610 General Supplies	78.09	2,847.21		2,925.30
<b>Total Supplies</b>	<b>\$78.09</b>	<b>\$2,847.21</b>		<b>\$2,925.30</b>
800 <u>Other Objects</u>				
810 Dues and Fees	26.70	362.30		389.00
<b>Total Other Objects</b>	<b>\$26.70</b>	<b>\$362.30</b>		<b>\$389.00</b>
<b>Total 2100 Support Services – Students</b>	<b>\$72,902.15</b>	<b>\$385,212.68</b>		<b>\$458,114.83</b>

LEA : 111317503     Southern Huntingdon County SD

Printed 12/10/2019 2:56:37 PM

<b>General Fund (10)</b>				
<b>2120 Guidance Services</b>	<u><b>Elementary</b></u>	<u><b>Secondary</b></u>	<u><b>Federal</b></u>	<u><b>Total</b></u>
<b>100 <u>Personnel Services – Salaries</u></b>				
100 Personnel Services – Salaries	40,655.15	164,224.89		204,880.04
<b>Total Personnel Services – Salaries</b>	<b>\$40,655.15</b>	<b>\$164,224.89</b>		<b>\$204,880.04</b>
<b>200 <u>Personnel Services – Employee Benefits</u></b>				
210 Group Insurance – Contracted Provider	15,001.65	51,366.67		66,368.32
220 Social Security Contributions	2,984.00	12,075.80		15,059.80
230 PSERS Retirement Contributions	13,603.08	54,788.26		68,391.34
<b>Total Personnel Services – Employee Benefits</b>	<b>\$31,588.73</b>	<b>\$118,230.73</b>		<b>\$149,819.46</b>
<b>300 <u>Purchased Professional and Technical Services</u></b>				
329 Professional Educational Services – Other		1,328.00		1,328.00
<b>Total Purchased Professional and Technical Services</b>		<b>\$1,328.00</b>		<b>\$1,328.00</b>
<b>500 <u>Other Purchased Services</u></b>				
580 Travel	59.92			59.92
<b>Total Other Purchased Services</b>	<b>\$59.92</b>			<b>\$59.92</b>
<b>600 <u>Supplies</u></b>				
610 General Supplies	65.73	386.88		452.61
<b>Total Supplies</b>	<b>\$65.73</b>	<b>\$386.88</b>		<b>\$452.61</b>
<b>800 <u>Other Objects</u></b>				
810 Dues and Fees	25.00	25.00		50.00
<b>Total Other Objects</b>	<b>\$25.00</b>	<b>\$25.00</b>		<b>\$50.00</b>
<b>Total 2120 Guidance Services</b>	<b>\$72,394.53</b>	<b>\$284,195.50</b>		<b>\$356,590.03</b>

LEA : 111317503     Southern Huntingdon County SD

Printed 12/10/2019 2:56:37 PM

General Fund (10)

2140 Psychological Services

	Elementary	Secondary	Federal	Total
<b>100 Personnel Services – Salaries</b>				
100 Personnel Services – Salaries	326.00	64,874.00		65,200.00
<b>Total Personnel Services – Salaries</b>	<b>\$326.00</b>	<b>\$64,874.00</b>		<b>\$65,200.00</b>
<b>200 Personnel Services – Employee Benefits</b>				
210 Group Insurance – Contracted Provider	33.76	6,719.14		6,752.90
220 Social Security Contributions	24.82	4,939.13		4,963.95
230 PSERS Retirement Contributions	108.98	21,687.28		21,796.26
<b>Total Personnel Services – Employee Benefits</b>	<b>\$167.56</b>	<b>\$33,345.55</b>		<b>\$33,513.11</b>
<b>600 Supplies</b>				
610 General Supplies	12.36	2,460.33		2,472.69
<b>Total Supplies</b>	<b>\$12.36</b>	<b>\$2,460.33</b>		<b>\$2,472.69</b>
<b>800 Other Objects</b>				
810 Dues and Fees	1.70	337.30		339.00
<b>Total Other Objects</b>	<b>\$1.70</b>	<b>\$337.30</b>		<b>\$339.00</b>
<b>Total 2140 Psychological Services</b>	<b>\$507.62</b>	<b>\$101,017.18</b>		<b>\$101,524.80</b>

LEA : 111317503     Southern Huntingdon County SD

Printed 12/10/2019 2:56:37 PM

General Fund (10)

2200 Support Services – Instructional Staff	Elementary	Secondary	Federal	Total
<b>100 Personnel Services – Salaries</b>				
100 Personnel Services – Salaries	36,307.25	102,667.78	10,179.25	149,154.28
<b>Total Personnel Services – Salaries</b>	<b>\$36,307.25</b>	<b>\$102,667.78</b>	<b>\$10,179.25</b>	<b>\$149,154.28</b>
<b>200 Personnel Services – Employee Benefits</b>				
210 Group Insurance – Contracted Provider	11,802.56	10,663.40		22,465.96
220 Social Security Contributions	2,679.07	7,770.10	759.98	11,209.15
230 PSERS Retirement Contributions	12,149.45	34,301.74	3,402.97	49,854.16
240 Tuition Reimbursement	14,317.60	16,548.00		30,865.60
<b>Total Personnel Services – Employee Benefits</b>	<b>\$40,948.68</b>	<b>\$69,283.24</b>	<b>\$4,162.95</b>	<b>\$114,394.87</b>
<b>300 Purchased Professional and Technical Services</b>				
322 Professional Educational Services – Ius	821.37	163,452.38		164,273.75
329 Professional Educational Services – Other	5.12	1,018.88		1,024.00
340 Technical Services	356.49	70,941.31		71,297.80
360 Employee Training and Development Services			12,848.80	12,848.80
390 Other Purchased Professional and Technical Services		8,419.80		8,419.80
<b>Total Purchased Professional and Technical Services</b>	<b>\$1,182.98</b>	<b>\$243,832.37</b>	<b>\$12,848.80</b>	<b>\$257,864.15</b>
<b>400 Purchased Property Services</b>				
430 Repairs and Maintenance Services	446.56	1,064.79		1,511.35
<b>Total Purchased Property Services</b>	<b>\$446.56</b>	<b>\$1,064.79</b>		<b>\$1,511.35</b>
<b>500 Other Purchased Services</b>				
530 Communications	3.25	647.71		650.96
580 Travel	4.93	981.94	575.56	1,562.43
<b>Total Other Purchased Services</b>	<b>\$8.18</b>	<b>\$1,629.65</b>	<b>\$575.56</b>	<b>\$2,213.39</b>
<b>600 Supplies</b>				
610 General Supplies	7,798.80	2,880.28	184.75	10,863.83
640 Books and Periodicals		2,030.19		2,030.19
<b>Total Supplies</b>	<b>\$7,798.80</b>	<b>\$4,910.47</b>	<b>\$184.75</b>	<b>\$12,894.02</b>
<b>700 Property</b>				
752 Capital Equipment – Original and Additional	16,500.00	37,875.68		54,375.68
762 Capitalized Equipment - Replacement	50,000.00			50,000.00
<b>Total Property</b>	<b>\$66,500.00</b>	<b>\$37,875.68</b>		<b>\$104,375.68</b>
<b>800 Other Objects</b>				
810 Dues and Fees	1.68	333.32		335.00
<b>Total Other Objects</b>	<b>\$1.68</b>	<b>\$333.32</b>		<b>\$335.00</b>
<b>Total 2200 Support Services – Instructional Staff</b>	<b>\$153,194.13</b>	<b>\$461,597.30</b>	<b>\$27,951.31</b>	<b>\$642,742.74</b>

LEA : 111317503     Southern Huntingdon County SD

Printed 12/10/2019 2:56:37 PM

General Fund (10)

2240 Computer-Assisted Instruction Support Services	<u>Elementary</u>	<u>Secondary</u>	<u>Federal</u>	<u>Total</u>
100 <u>Personnel Services – Salaries</u>				
100 Personnel Services – Salaries	14.62	2,910.38		2,925.00
<b>Total Personnel Services – Salaries</b>	<b>\$14.62</b>	<b>\$2,910.38</b>		<b>\$2,925.00</b>
200 <u>Personnel Services – Employee Benefits</u>				
220 Social Security Contributions	1.09	216.46		217.55
230 PSERS Retirement Contributions	4.89	972.94		977.83
<b>Total Personnel Services – Employee Benefits</b>	<b>\$5.98</b>	<b>\$1,189.40</b>		<b>\$1,195.38</b>
300 <u>Purchased Professional and Technical Services</u>				
322 Professional Educational Services – Ius	821.37	163,452.38		164,273.75
329 Professional Educational Services – Other	5.12	1,018.88		1,024.00
340 Technical Services	356.49	70,941.31		71,297.80
<b>Total Purchased Professional and Technical Services</b>	<b>\$1,182.98</b>	<b>\$235,412.57</b>		<b>\$236,595.55</b>
400 <u>Purchased Property Services</u>				
430 Repairs and Maintenance Services	446.56	1,064.79		1,511.35
<b>Total Purchased Property Services</b>	<b>\$446.56</b>	<b>\$1,064.79</b>		<b>\$1,511.35</b>
600 <u>Supplies</u>				
610 General Supplies	7,798.80	2,845.28		10,644.08
<b>Total Supplies</b>	<b>\$7,798.80</b>	<b>\$2,845.28</b>		<b>\$10,644.08</b>
700 <u>Property</u>				
752 Capital Equipment – Original and Additional	16,500.00	37,875.68		54,375.68
762 Capitalized Equipment - Replacement	50,000.00			50,000.00
<b>Total Property</b>	<b>\$66,500.00</b>	<b>\$37,875.68</b>		<b>\$104,375.68</b>
<b>Total 2240 Computer-Assisted Instruction Support Services</b>	<b>\$75,948.94</b>	<b>\$281,298.10</b>		<b>\$357,247.04</b>

LEA : 111317503     Southern Huntingdon County SD

Printed 12/10/2019 2:56:37 PM

General Fund (10)				
2250 School Library Services	<u>Elementary</u>	<u>Secondary</u>	<u>Federal</u>	<u>Total</u>
100 <u>Personnel Services – Salaries</u>				
100 Personnel Services – Salaries	35,914.13	24,435.90		60,350.03
<b>Total Personnel Services – Salaries</b>	<b>\$35,914.13</b>	<b>\$24,435.90</b>		<b>\$60,350.03</b>
200 <u>Personnel Services – Employee Benefits</u>				
210 Group Insurance – Contracted Provider	11,768.80	3,944.26		15,713.06
220 Social Security Contributions	2,649.25	1,836.67		4,485.92
230 PSERS Retirement Contributions	12,018.03	8,148.77		20,166.80
<b>Total Personnel Services – Employee Benefits</b>	<b>\$26,436.08</b>	<b>\$13,929.70</b>		<b>\$40,365.78</b>
300 <u>Purchased Professional and Technical Services</u>				
390 Other Purchased Professional and Technical Services		8,419.80		8,419.80
<b>Total Purchased Professional and Technical Services</b>		<b>\$8,419.80</b>		<b>\$8,419.80</b>
600 <u>Supplies</u>				
610 General Supplies		35.00		35.00
640 Books and Periodicals		2,030.19		2,030.19
<b>Total Supplies</b>		<b>\$2,065.19</b>		<b>\$2,065.19</b>
<b>Total 2250 School Library Services</b>	<b>\$62,350.21</b>	<b>\$48,850.59</b>		<b>\$111,200.80</b>

LEA : 111317503     Southern Huntingdon County SD

Printed 12/10/2019 2:56:37 PM

General Fund (10)

2260 Instruction and Curriculum Development Services	Elementary	Secondary	Federal	Total
100 <u>Personnel Services – Salaries</u>				
100 Personnel Services – Salaries	378.50	75,321.50	10,179.25	85,879.25
<b>Total Personnel Services – Salaries</b>	<b>\$378.50</b>	<b>\$75,321.50</b>	<b>\$10,179.25</b>	<b>\$85,879.25</b>
200 <u>Personnel Services – Employee Benefits</u>				
210 Group Insurance – Contracted Provider	33.76	6,719.14		6,752.90
220 Social Security Contributions	28.73	5,716.97	759.98	6,505.68
230 PSERS Retirement Contributions	126.53	25,180.03	3,402.97	28,709.53
<b>Total Personnel Services – Employee Benefits</b>	<b>\$189.02</b>	<b>\$37,616.14</b>	<b>\$4,162.95</b>	<b>\$41,968.11</b>
500 <u>Other Purchased Services</u>				
530 Communications	3.25	647.71		650.96
580 Travel	4.93	981.94		986.87
<b>Total Other Purchased Services</b>	<b>\$8.18</b>	<b>\$1,629.65</b>		<b>\$1,637.83</b>
600 <u>Supplies</u>				
610 General Supplies			184.75	184.75
<b>Total Supplies</b>			<b>\$184.75</b>	<b>\$184.75</b>
800 <u>Other Objects</u>				
810 Dues and Fees	1.68	333.32		335.00
<b>Total Other Objects</b>	<b>\$1.68</b>	<b>\$333.32</b>		<b>\$335.00</b>
<b>Total 2260 Instruction and Curriculum Development Services</b>	<b>\$577.38</b>	<b>\$114,900.61</b>	<b>\$14,526.95</b>	<b>\$130,004.94</b>



LEA : 111317503     Southern Huntingdon County SD

Printed 12/10/2019 2:56:37 PM

General Fund (10)				
2270 Instructional Staff Professional Development Services	<u>Elementary</u>	<u>Secondary</u>	<u>Federal</u>	<u>Total</u>
200 <u>Personnel Services – Employee Benefits</u>				
240 Tuition Reimbursement	14,317.60	16,548.00		30,865.60
Total Personnel Services – Employee Benefits	\$14,317.60	\$16,548.00		\$30,865.60
300 <u>Purchased Professional and Technical Services</u>				
360 Employee Training and Development Services			12,848.80	12,848.80
Total Purchased Professional and Technical Services			\$12,848.80	\$12,848.80
500 <u>Other Purchased Services</u>				
580 Travel			575.56	575.56
Total Other Purchased Services			\$575.56	\$575.56
Total 2270 Instructional Staff Professional Development Services	\$14,317.60	\$16,548.00	\$13,424.36	\$44,289.96

LEA : 111317503     Southern Huntingdon County SD

Printed 12/10/2019 2:56:37 PM

General Fund (10)				
2300 Support Services – Administration	<u>Elementary</u>	<u>Secondary</u>	<u>Federal</u>	<u>Total</u>
100 <u>Personnel Services – Salaries</u>				
100 Personnel Services – Salaries	184,782.61	182,383.42		597,641.43
<b>Total Personnel Services – Salaries</b>	<b>\$184,782.61</b>	<b>\$182,383.42</b>		<b>\$597,641.43</b>
200 <u>Personnel Services – Employee Benefits</u>				
210 Group Insurance – Contracted Provider	70,380.55	45,459.57		141,296.59
220 Social Security Contributions	13,486.38	13,523.14		44,459.93
230 PSERS Retirement Contributions	61,753.47	59,877.96		181,439.69
<b>Total Personnel Services – Employee Benefits</b>	<b>\$145,620.40</b>	<b>\$118,860.67</b>		<b>\$367,196.21</b>
300 <u>Purchased Professional and Technical Services</u>				
329 Professional Educational Services – Other	9,816.00			10,038.50
330 Other Professional Services				59,871.93
340 Technical Services				50.00
<b>Total Purchased Professional and Technical Services</b>	<b>\$9,816.00</b>			<b>\$69,960.43</b>
500 <u>Other Purchased Services</u>				
530 Communications	1,175.47	9,638.22		10,813.69
549 Other Advertising/Public Relations				4,231.68
550 Printing and Binding				3,919.20
580 Travel	264.00	457.36		1,042.44
<b>Total Other Purchased Services</b>	<b>\$1,439.47</b>	<b>\$10,095.58</b>		<b>\$20,007.01</b>
600 <u>Supplies</u>				
610 General Supplies	1,265.80	1,283.55		8,576.50
<b>Total Supplies</b>	<b>\$1,265.80</b>	<b>\$1,283.55</b>		<b>\$8,576.50</b>
700 <u>Property</u>				
762 Capitalized Equipment - Replacement				129.99
<b>Total Property</b>				<b>\$129.99</b>
800 <u>Other Objects</u>				
810 Dues and Fees	335.00	704.30		10,984.53
<b>Total Other Objects</b>	<b>\$335.00</b>	<b>\$704.30</b>		<b>\$10,984.53</b>
<b>Total 2300 Support Services – Administration</b>	<b>\$343,259.28</b>	<b>\$313,327.52</b>		<b>\$1,074,496.10</b>

LEA : 111317503     Southern Huntingdon County SD

Printed 12/10/2019 2:56:37 PM

General Fund (10)				
2310 Board Services				
	<u>Elementary</u>	<u>Secondary</u>	<u>Federal</u>	<u>Total</u>
100 <u>Personnel Services – Salaries</u>				
100 Personnel Services – Salaries				15,766.14
Total Personnel Services – Salaries				\$15,766.14
200 <u>Personnel Services – Employee Benefits</u>				
220 Social Security Contributions				1,206.14
230 PSERS Retirement Contributions				5,270.72
Total Personnel Services – Employee Benefits				\$6,476.86
300 <u>Purchased Professional and Technical Services</u>				
330 Other Professional Services				48,894.38
Total Purchased Professional and Technical Services				\$48,894.38
500 <u>Other Purchased Services</u>				
549 Other Advertising/Public Relations				4,231.68
580 Travel				321.08
Total Other Purchased Services				\$4,552.76
600 <u>Supplies</u>				
610 General Supplies				436.46
Total Supplies				\$436.46
700 <u>Property</u>				
762 Capitalized Equipment - Replacement				129.99
Total Property				\$129.99
800 <u>Other Objects</u>				
810 Dues and Fees				8,185.23
Total Other Objects				\$8,185.23
Total 2310 Board Services				\$84,441.82

General Fund (10)

2330 Tax Assessment and Collection Services	<u>Elementary</u>	<u>Secondary</u>	<u>Federal</u>	<u>Total</u>
100 <u>Personnel Services – Salaries</u>				
100 Personnel Services – Salaries				46,861.00
Total Personnel Services – Salaries				\$46,861.00
200 <u>Personnel Services – Employee Benefits</u>				
220 Social Security Contributions				3,584.81
Total Personnel Services – Employee Benefits				\$3,584.81
300 <u>Purchased Professional and Technical Services</u>				
330 Other Professional Services				10,977.55
Total Purchased Professional and Technical Services				\$10,977.55
500 <u>Other Purchased Services</u>				
550 Printing and Binding				3,919.20
Total Other Purchased Services				\$3,919.20
600 <u>Supplies</u>				
610 General Supplies				3,590.83
Total Supplies				\$3,590.83
Total 2330 Tax Assessment and Collection Services				\$68,933.39

LEA : 111317503     Southern Huntingdon County SD

Printed 12/10/2019 2:56:37 PM

General Fund (10)				
2360 Office of the Superintendent / Executive Director Services	<u>Elementary</u>	<u>Secondary</u>	<u>Federal</u>	<u>Total</u>
100 <u>Personnel Services – Salaries</u>				
100 Personnel Services – Salaries				167,848.26
Total Personnel Services – Salaries				\$167,848.26
200 <u>Personnel Services – Employee Benefits</u>				
210 Group Insurance – Contracted Provider				25,456.47
220 Social Security Contributions				12,659.46
230 PSERS Retirement Contributions				54,537.54
Total Personnel Services – Employee Benefits				\$92,653.47
300 <u>Purchased Professional and Technical Services</u>				
329 Professional Educational Services – Other				222.50
340 Technical Services				50.00
Total Purchased Professional and Technical Services				\$272.50
500 <u>Other Purchased Services</u>				
530 Communications	5.23	1,040.64		1,045.87
Total Other Purchased Services	\$5.23	\$1,040.64		\$1,045.87
600 <u>Supplies</u>				
610 General Supplies				1,999.86
Total Supplies				\$1,999.86
800 <u>Other Objects</u>				
810 Dues and Fees				1,760.00
Total Other Objects				\$1,760.00
Total 2360 Office of the Superintendent / Executive Director Services	\$5.23	\$1,040.64		\$265,579.96

LEA : 111317503     Southern Huntingdon County SD

Printed 12/10/2019 2:56:37 PM

General Fund (10)				
2380 Office of the Principal Services	<u>Elementary</u>	<u>Secondary</u>	<u>Federal</u>	<u>Total</u>
100 <u>Personnel Services – Salaries</u>				
100 Personnel Services – Salaries	184,782.61	182,383.42		367,166.03
<b>Total Personnel Services – Salaries</b>	<b>\$184,782.61</b>	<b>\$182,383.42</b>		<b>\$367,166.03</b>
200 <u>Personnel Services – Employee Benefits</u>				
210 Group Insurance – Contracted Provider	70,380.55	45,459.57		115,840.12
220 Social Security Contributions	13,486.38	13,523.14		27,009.52
230 PSERS Retirement Contributions	61,753.47	59,877.96		121,631.43
<b>Total Personnel Services – Employee Benefits</b>	<b>\$145,620.40</b>	<b>\$118,860.67</b>		<b>\$264,481.07</b>
300 <u>Purchased Professional and Technical Services</u>				
329 Professional Educational Services – Other	9,816.00			9,816.00
<b>Total Purchased Professional and Technical Services</b>	<b>\$9,816.00</b>			<b>\$9,816.00</b>
500 <u>Other Purchased Services</u>				
530 Communications	1,170.24	8,597.58		9,767.82
580 Travel	264.00	457.36		721.36
<b>Total Other Purchased Services</b>	<b>\$1,434.24</b>	<b>\$9,054.94</b>		<b>\$10,489.18</b>
600 <u>Supplies</u>				
610 General Supplies	1,265.80	1,283.55		2,549.35
<b>Total Supplies</b>	<b>\$1,265.80</b>	<b>\$1,283.55</b>		<b>\$2,549.35</b>
800 <u>Other Objects</u>				
810 Dues and Fees	335.00	704.30		1,039.30
<b>Total Other Objects</b>	<b>\$335.00</b>	<b>\$704.30</b>		<b>\$1,039.30</b>
<b>Total 2380 Office of the Principal Services</b>	<b>\$343,254.05</b>	<b>\$312,286.88</b>		<b>\$655,540.93</b>

LEA : 111317503     Southern Huntingdon County SD

Printed 12/10/2019 2:56:37 PM

General Fund (10)				
2400 Support Services – Pupil Health	<u>Elementary</u>	<u>Secondary</u>	<u>Federal</u>	<u>Total</u>
100 <u>Personnel Services – Salaries</u>				
100 Personnel Services – Salaries				118,810.36
Total Personnel Services – Salaries				\$118,810.36
200 <u>Personnel Services – Employee Benefits</u>				
210 Group Insurance – Contracted Provider				26,057.70
220 Social Security Contributions				8,879.52
230 PSERS Retirement Contributions				39,735.88
Total Personnel Services – Employee Benefits				\$74,673.10
300 <u>Purchased Professional and Technical Services</u>				
330 Other Professional Services				2,065.54
Total Purchased Professional and Technical Services				\$2,065.54
500 <u>Other Purchased Services</u>				
580 Travel				195.64
Total Other Purchased Services				\$195.64
600 <u>Supplies</u>				
610 General Supplies				1,573.68
Total Supplies				\$1,573.68
800 <u>Other Objects</u>				
810 Dues and Fees				125.00
Total Other Objects				\$125.00
Total 2400 Support Services – Pupil Health				\$197,443.32

LEA : 111317503     Southern Huntingdon County SD

Printed 12/10/2019 2:56:37 PM

General Fund (10)				
2440 Nursing Services	<u>Elementary</u>	<u>Secondary</u>	<u>Federal</u>	<u>Total</u>
100 <u>Personnel Services – Salaries</u>				
100 Personnel Services – Salaries				118,810.36
Total Personnel Services – Salaries				\$118,810.36
200 <u>Personnel Services – Employee Benefits</u>				
210 Group Insurance – Contracted Provider				26,057.70
220 Social Security Contributions				8,879.52
230 PSERS Retirement Contributions				39,735.88
Total Personnel Services – Employee Benefits				\$74,673.10
300 <u>Purchased Professional and Technical Services</u>				
330 Other Professional Services				2,065.54
Total Purchased Professional and Technical Services				\$2,065.54
500 <u>Other Purchased Services</u>				
580 Travel				195.64
Total Other Purchased Services				\$195.64
600 <u>Supplies</u>				
610 General Supplies				1,573.68
Total Supplies				\$1,573.68
800 <u>Other Objects</u>				
810 Dues and Fees				125.00
Total Other Objects				\$125.00
Total 2440 Nursing Services				\$197,443.32



LEA : 111317503     Southern Huntingdon County SD

Printed 12/10/2019 2:56:37 PM

General Fund (10)

2500 Support Services – Business	<u>Elementary</u>	<u>Secondary</u>	<u>Federal</u>	<u>Total</u>
100 <u>Personnel Services – Salaries</u>				
100 Personnel Services – Salaries				145,857.68
Total Personnel Services – Salaries				\$145,857.68
200 <u>Personnel Services – Employee Benefits</u>				
210 Group Insurance – Contracted Provider				74,848.40
220 Social Security Contributions				10,325.62
230 PSERS Retirement Contributions				48,760.06
Total Personnel Services – Employee Benefits				\$133,934.08
300 <u>Purchased Professional and Technical Services</u>				
329 Professional Educational Services – Other				15,249.25
Total Purchased Professional and Technical Services				\$15,249.25
500 <u>Other Purchased Services</u>				
530 Communications				652.96
580 Travel				456.46
Total Other Purchased Services				\$1,109.42
600 <u>Supplies</u>				
610 General Supplies				2,991.02
Total Supplies				\$2,991.02
800 <u>Other Objects</u>				
810 Dues and Fees				862.77
Total Other Objects				\$862.77
Total 2500 Support Services – Business				\$300,004.22

LEA : 111317503     Southern Huntingdon County SD

Printed 12/10/2019 2:56:37 PM

General Fund (10)				
2510 Fiscal Services	<u>Elementary</u>	<u>Secondary</u>	<u>Federal</u>	<u>Total</u>
100 <u>Personnel Services – Salaries</u>				
100 Personnel Services – Salaries				145,857.68
Total Personnel Services – Salaries				\$145,857.68
200 <u>Personnel Services – Employee Benefits</u>				
210 Group Insurance – Contracted Provider				74,848.40
220 Social Security Contributions				10,325.62
230 PSERS Retirement Contributions				48,760.06
Total Personnel Services – Employee Benefits				\$133,934.08
300 <u>Purchased Professional and Technical Services</u>				
329 Professional Educational Services – Other				15,249.25
Total Purchased Professional and Technical Services				\$15,249.25
500 <u>Other Purchased Services</u>				
530 Communications				652.96
580 Travel				456.46
Total Other Purchased Services				\$1,109.42
600 <u>Supplies</u>				
610 General Supplies				2,991.02
Total Supplies				\$2,991.02
800 <u>Other Objects</u>				
810 Dues and Fees				862.77
Total Other Objects				\$862.77
Total 2510 Fiscal Services				\$300,004.22

LEA : 111317503     Southern Huntingdon County SD

Printed 12/10/2019 2:56:37 PM

General Fund (10)

2511 Supervision of Fiscal Services - Head of Component	<u>Elementary</u>	<u>Secondary</u>	<u>Federal</u>	<u>Total</u>
100 <u>Personnel Services – Salaries</u>				
100 Personnel Services – Salaries				84,920.00
Total Personnel Services – Salaries				\$84,920.00
200 <u>Personnel Services – Employee Benefits</u>				
210 Group Insurance – Contracted Provider				37,463.80
220 Social Security Contributions				5,976.58
230 PSERS Retirement Contributions				28,388.65
Total Personnel Services – Employee Benefits				\$71,829.03
300 <u>Purchased Professional and Technical Services</u>				
329 Professional Educational Services – Other				15,249.25
Total Purchased Professional and Technical Services				\$15,249.25
500 <u>Other Purchased Services</u>				
530 Communications				652.96
580 Travel				456.46
Total Other Purchased Services				\$1,109.42
600 <u>Supplies</u>				
610 General Supplies				2,991.02
Total Supplies				\$2,991.02
800 <u>Other Objects</u>				
810 Dues and Fees				862.77
Total Other Objects				\$862.77
Total 2511 Supervision of Fiscal Services - Head of Component				\$176,961.49

General Fund (10)

2513 Receiving and Disbursing Funds Services	<u>Elementary</u>	<u>Secondary</u>	<u>Federal</u>	<u>Total</u>
100 <u>Personnel Services – Salaries</u>				
100 Personnel Services – Salaries				33,053.30
Total Personnel Services – Salaries				\$33,053.30
200 <u>Personnel Services – Employee Benefits</u>				
210 Group Insurance – Contracted Provider				17,470.10
220 Social Security Contributions				2,382.57
230 PSERS Retirement Contributions				11,049.66
Total Personnel Services – Employee Benefits				\$30,902.33
Total 2513 Receiving and Disbursing Funds Services				\$63,955.63

LEA : 111317503     Southern Huntingdon County SD

Printed 12/10/2019 2:56:37 PM

General Fund (10)

2514 Payroll Services

	<u>Elementary</u>	<u>Secondary</u>	<u>Federal</u>	<u>Total</u>
<b>100 <u>Personnel Services – Salaries</u></b>				
100 Personnel Services – Salaries				27,884.38
<b>Total Personnel Services – Salaries</b>				<b>\$27,884.38</b>
<b>200 <u>Personnel Services – Employee Benefits</u></b>				
210 Group Insurance – Contracted Provider				19,914.50
220 Social Security Contributions				1,966.47
230 PSERS Retirement Contributions				9,321.75
<b>Total Personnel Services – Employee Benefits</b>				<b>\$31,202.72</b>
<b>Total 2514 Payroll Services</b>				<b>\$59,087.10</b>

LEA : 111317503     Southern Huntingdon County SD

Printed 12/10/2019 2:56:37 PM

General Fund (10)				
2600 Operation and Maintenance of Plant Services	<u>Elementary</u>	<u>Secondary</u>	<u>Federal</u>	<u>Total</u>
100 <u>Personnel Services – Salaries</u>				
100 Personnel Services – Salaries			4,037.82	340,444.78
Total Personnel Services – Salaries			\$4,037.82	\$340,444.78
200 <u>Personnel Services – Employee Benefits</u>				
210 Group Insurance – Contracted Provider				92,580.95
220 Social Security Contributions			301.41	25,215.62
230 PSERS Retirement Contributions			1,349.89	112,666.88
Total Personnel Services – Employee Benefits			\$1,651.30	\$230,463.45
300 <u>Purchased Professional and Technical Services</u>				
329 Professional Educational Services – Other				57,411.93
Total Purchased Professional and Technical Services				\$57,411.93
400 <u>Purchased Property Services</u>				
410 Cleaning Services				27,996.79
420 Utility Services				222,452.93
430 Repairs and Maintenance Services				311,807.12
440 Rentals				2,730.00
Total Purchased Property Services				\$564,986.84
500 <u>Other Purchased Services</u>				
522 Automotive Liability Insurance				5,765.00
523 General Property and Liability Insurance				43,376.00
529 Other Insurance				120,557.75
530 Communications				22,944.36
580 Travel				6,297.32
Total Other Purchased Services				\$198,940.43
600 <u>Supplies</u>				
610 General Supplies	32,329.70	39,278.31		71,608.01
620 Energy				192,958.54
Total Supplies	\$32,329.70	\$39,278.31		\$264,566.55
700 <u>Property</u>				
752 Capital Equipment – Original and Additional				5,987.85
762 Capitalized Equipment - Replacement				23,338.00
Total Property				\$29,325.85
800 <u>Other Objects</u>				
810 Dues and Fees				3,993.08
Total Other Objects				\$3,993.08
Total 2600 Operation and Maintenance of Plant Services	\$32,329.70	\$39,278.31	\$5,689.12	\$1,690,132.91

LEA : 111317503     Southern Huntingdon County SD

Printed 12/10/2019 2:56:37 PM

General Fund (10)

2610 Supervision of Operation and Maintenance of Plant Services	<u>Elementary</u>	<u>Secondary</u>	<u>Federal</u>	<u>Total</u>
100 <u>Personnel Services – Salaries</u>				
100 Personnel Services – Salaries				56,564.09
Total Personnel Services – Salaries				\$56,564.09
200 <u>Personnel Services – Employee Benefits</u>				
210 Group Insurance – Contracted Provider				17,345.60
220 Social Security Contributions				4,202.78
230 PSERS Retirement Contributions				18,909.47
Total Personnel Services – Employee Benefits				\$40,457.85
Total 2610 Supervision of Operation and Maintenance of Plant Services				\$97,021.94

LEA : 111317503     Southern Huntingdon County SD

Printed 12/10/2019 2:56:37 PM

General Fund (10)				
2611 Supervision of Operation and Maintenance of Plant Services – Head of Component	<u>Elementary</u>	<u>Secondary</u>	<u>Federal</u>	<u>Total</u>
100 <u>Personnel Services – Salaries</u>				
100 Personnel Services – Salaries				56,564.09
Total Personnel Services – Salaries				\$56,564.09
200 <u>Personnel Services – Employee Benefits</u>				
210 Group Insurance – Contracted Provider				17,345.60
220 Social Security Contributions				4,202.78
230 PSERS Retirement Contributions				18,909.47
Total Personnel Services – Employee Benefits				\$40,457.85
Total 2611 Supervision of Operation and Maintenance of Plant Services – Head of Component				\$97,021.94



LEA : 111317503     Southern Huntingdon County SD

Printed 12/10/2019 2:56:37 PM

<b>General Fund (10)</b>				
<b>2620 Operation of Buildings Services</b>	<b><u>Elementary</u></b>	<b><u>Secondary</u></b>	<b><u>Federal</u></b>	<b><u>Total</u></b>
<b>100 <u>Personnel Services – Salaries</u></b>				
100 Personnel Services – Salaries			4,037.82	283,880.69
<b>Total Personnel Services – Salaries</b>			<b>\$4,037.82</b>	<b>\$283,880.69</b>
<b>200 <u>Personnel Services – Employee Benefits</u></b>				
210 Group Insurance – Contracted Provider				75,235.35
220 Social Security Contributions			301.41	21,012.84
230 PSERS Retirement Contributions			1,349.89	93,757.41
<b>Total Personnel Services – Employee Benefits</b>			<b>\$1,651.30</b>	<b>\$190,005.60</b>
<b>300 <u>Purchased Professional and Technical Services</u></b>				
329 Professional Educational Services – Other				57,411.93
<b>Total Purchased Professional and Technical Services</b>				<b>\$57,411.93</b>
<b>400 <u>Purchased Property Services</u></b>				
410 Cleaning Services				27,996.79
420 Utility Services				222,452.93
430 Repairs and Maintenance Services				300,596.27
440 Rentals				2,730.00
<b>Total Purchased Property Services</b>				<b>\$553,775.99</b>
<b>500 <u>Other Purchased Services</u></b>				
522 Automotive Liability Insurance				5,765.00
523 General Property and Liability Insurance				43,376.00
529 Other Insurance				120,557.75
530 Communications				22,944.36
580 Travel				6,297.32
<b>Total Other Purchased Services</b>				<b>\$198,940.43</b>
<b>600 <u>Supplies</u></b>				
610 General Supplies	32,329.70	39,278.31		71,608.01
620 Energy				192,958.54
<b>Total Supplies</b>	<b>\$32,329.70</b>	<b>\$39,278.31</b>		<b>\$264,566.55</b>
<b>700 <u>Property</u></b>				
752 Capital Equipment – Original and Additional				5,987.85
762 Capitalized Equipment - Replacement				23,338.00
<b>Total Property</b>				<b>\$29,325.85</b>
<b>800 <u>Other Objects</u></b>				
810 Dues and Fees				3,993.08
<b>Total Other Objects</b>				<b>\$3,993.08</b>
<b>Total 2620 Operation of Buildings Services</b>	<b>\$32,329.70</b>	<b>\$39,278.31</b>	<b>\$5,689.12</b>	<b>\$1,581,900.12</b>

LEA : 111317503     Southern Huntingdon County SD

Printed 12/10/2019 2:56:37 PM

General Fund (10)

2650 Vehicle Operation and Maintenance Services (Other Than Student Transportation Vehicles)	<u>Elementary</u>	<u>Secondary</u>	<u>Federal</u>	<u>Total</u>
400 <u>Purchased Property Services</u>				
430 Repairs and Maintenance Services				11,210.85
Total Purchased Property Services				\$11,210.85
Total 2650 Vehicle Operation and Maintenance Services (Other Than Student Transportation Vehicles)				\$11,210.85

LEA : 111317503     Southern Huntingdon County SD

Printed 12/10/2019 2:56:37 PM

General Fund (10)				
2700 Student Transportation Services	<u>Elementary</u>	<u>Secondary</u>	<u>Federal</u>	<u>Total</u>
100 <u>Personnel Services – Salaries</u>				
100 Personnel Services – Salaries				630.81
Total Personnel Services – Salaries				\$630.81
200 <u>Personnel Services – Employee Benefits</u>				
220 Social Security Contributions				48.26
Total Personnel Services – Employee Benefits				\$48.26
300 <u>Purchased Professional and Technical Services</u>				
329 Professional Educational Services – Other				3,008.92
Total Purchased Professional and Technical Services				\$3,008.92
500 <u>Other Purchased Services</u>				
511 Student Transportation Services from Another LEA Within the State				3,000.00
513 Contracted Carriers			9,763.80	1,304,257.26
Total Other Purchased Services			\$9,763.80	\$1,307,257.26
600 <u>Supplies</u>				
610 General Supplies				4,692.00
Total Supplies				\$4,692.00
700 <u>Property</u>				
752 Capital Equipment – Original and Additional				645.40
Total Property				\$645.40
Total 2700 Student Transportation Services			\$9,763.80	\$1,316,282.65

LEA : 111317503     Southern Huntingdon County SD

Printed 12/10/2019 2:56:37 PM

General Fund (10)				
2720 Vehicle Operation Services				
	<u>Elementary</u>	<u>Secondary</u>	<u>Federal</u>	<u>Total</u>
300 <u>Purchased Professional and Technical Services</u>				
329 Professional Educational Services – Other				3,008.92
Total Purchased Professional and Technical Services				\$3,008.92
500 <u>Other Purchased Services</u>				
511 Student Transportation Services from Another LEA Within the State				3,000.00
513 Contracted Carriers			9,763.80	1,304,257.26
Total Other Purchased Services			\$9,763.80	\$1,307,257.26
600 <u>Supplies</u>				
610 General Supplies				4,692.00
Total Supplies				\$4,692.00
700 <u>Property</u>				
752 Capital Equipment – Original and Additional				645.40
Total Property				\$645.40
Total 2720 Vehicle Operation Services			\$9,763.80	\$1,315,603.58

General Fund (10)

2730 Monitoring Services

<u>Elementary</u>	<u>Secondary</u>	<u>Federal</u>	<u>Total</u>
-------------------	------------------	----------------	--------------

100 Personnel Services – Salaries

100 Personnel Services – Salaries			630.81
-----------------------------------	--	--	--------

<b>Total Personnel Services – Salaries</b>			<b>\$630.81</b>
--	--	--	-----------------

200 Personnel Services – Employee Benefits

220 Social Security Contributions			48.26
-----------------------------------	--	--	-------

<b>Total Personnel Services – Employee Benefits</b>			<b>\$48.26</b>
---	--	--	----------------

<b>Total 2730 Monitoring Services</b>			<b>\$679.07</b>
---------------------------------------	--	--	-----------------

LEA : 111317503     Southern Huntingdon County SD

Printed 12/10/2019 2:56:37 PM

General Fund (10)

2800 Support Services – Central	<u>Elementary</u>	<u>Secondary</u>	<u>Federal</u>	<u>Total</u>
100 <u>Personnel Services – Salaries</u>				
100 Personnel Services – Salaries			1,500.00	1,500.00
Total Personnel Services – Salaries			\$1,500.00	\$1,500.00
200 <u>Personnel Services – Employee Benefits</u>				
220 Social Security Contributions			114.75	114.75
230 PSERS Retirement Contributions			501.45	501.45
Total Personnel Services – Employee Benefits			\$616.20	\$616.20
Total 2800 Support Services – Central			\$2,116.20	\$2,116.20

LEA : 111317503     Southern Huntingdon County SD

Printed 12/10/2019 2:56:37 PM

General Fund (10)

2850 State and Federal Agency Liaison Services	<u>Elementary</u>	<u>Secondary</u>	<u>Federal</u>	<u>Total</u>
100 <u>Personnel Services – Salaries</u>				
100 Personnel Services – Salaries			1,500.00	1,500.00
Total Personnel Services – Salaries			\$1,500.00	\$1,500.00
200 <u>Personnel Services – Employee Benefits</u>				
220 Social Security Contributions			114.75	114.75
230 PSERS Retirement Contributions			501.45	501.45
Total Personnel Services – Employee Benefits			\$616.20	\$616.20
Total 2850 State and Federal Agency Liaison Services			\$2,116.20	\$2,116.20

General Fund (10)

2900 Other Support Services	<u>Elementary</u>	<u>Secondary</u>	<u>Federal</u>	<u>Total</u>
200 <u>Personnel Services – Employee Benefits</u>				
250 Unemployment Compensation				160.00
Total Personnel Services – Employee Benefits				\$160.00
Total 2900 Other Support Services				\$160.00



LEA : 111317503     Southern Huntingdon County SD

Printed 12/10/2019 2:56:37 PM

General Fund (10)

2910 Support Services Not Listed Elsewhere In the 2000 Series

Elementary                      Secondary                      Federal                      Total

200 Personnel Services – Employee Benefits

250 Unemployment Compensation 160.00

**Total Personnel Services – Employee Benefits \$160.00**

**Total 2910 Support Services Not Listed Elsewhere In the 2000 Series \$160.00**

LEA : 111317503     Southern Huntingdon County SD

Printed 12/10/2019 2:56:40 PM

<b>General Fund (10)</b>	
<b>3000 Operation of Non-Instructional Services</b>	<b><u>Total</u></b>
<b>100 <u>Personnel Services – Salaries</u></b>	
100 Personnel Services – Salaries	162,112.00
<b>Total Personnel Services – Salaries</b>	<b>\$162,112.00</b>
<b>200 <u>Personnel Services – Employee Benefits</u></b>	
210 Group Insurance – Contracted Provider	6,594.50
220 Social Security Contributions	10,860.74
230 PSERS Retirement Contributions	40,079.23
<b>Total Personnel Services – Employee Benefits</b>	<b>\$57,534.47</b>
<b>300 <u>Purchased Professional and Technical Services</u></b>	
329 Professional Educational Services – Other	1,680.00
<b>Total Purchased Professional and Technical Services</b>	<b>\$1,680.00</b>
<b>400 <u>Purchased Property Services</u></b>	
430 Repairs and Maintenance Services	6,498.84
<b>Total Purchased Property Services</b>	<b>\$6,498.84</b>
<b>500 <u>Other Purchased Services</u></b>	
510 Student Transportation Services	25,396.83
580 Travel	969.24
<b>Total Other Purchased Services</b>	<b>\$26,366.07</b>
<b>600 <u>Supplies</u></b>	
610 General Supplies	11,854.55
640 Books and Periodicals	751.56
<b>Total Supplies</b>	<b>\$12,606.11</b>
<b>700 <u>Property</u></b>	
762 Capitalized Equipment - Replacement	11,343.98
<b>Total Property</b>	<b>\$11,343.98</b>
<b>800 <u>Other Objects</u></b>	
810 Dues and Fees	4,789.90
<b>Total Other Objects</b>	<b>\$4,789.90</b>
<b>Total 3000 Operation of Non-Instructional Services</b>	<b>\$282,931.37</b>

LEA : 111317503     Southern Huntingdon County SD

Printed 12/10/2019 2:56:40 PM

General Fund (10)				
3200 Student Activities	<u>Elementary</u>	<u>Secondary</u>	<u>Federal</u>	<u>Total</u>
100 <u>Personnel Services – Salaries</u>				
100 Personnel Services – Salaries				162,112.00
Total Personnel Services – Salaries				\$162,112.00
200 <u>Personnel Services – Employee Benefits</u>				
210 Group Insurance – Contracted Provider				6,594.50
220 Social Security Contributions				10,860.74
230 PSERS Retirement Contributions				40,079.23
Total Personnel Services – Employee Benefits				\$57,534.47
300 <u>Purchased Professional and Technical Services</u>				
329 Professional Educational Services – Other				1,680.00
Total Purchased Professional and Technical Services				\$1,680.00
400 <u>Purchased Property Services</u>				
430 Repairs and Maintenance Services				6,498.84
Total Purchased Property Services				\$6,498.84
500 <u>Other Purchased Services</u>				
510 Student Transportation Services				25,396.83
580 Travel				969.24
Total Other Purchased Services				\$26,366.07
600 <u>Supplies</u>				
610 General Supplies				11,854.55
640 Books and Periodicals				751.56
Total Supplies				\$12,606.11
700 <u>Property</u>				
762 Capitalized Equipment - Replacement				11,343.98
Total Property				\$11,343.98
800 <u>Other Objects</u>				
810 Dues and Fees				4,789.90
Total Other Objects				\$4,789.90
Total 3200 Student Activities				\$282,931.37

General Fund (10)

<b>5000 Other Expenditures and Financing Uses</b>		<b><u>Total</u></b>
<b>800 <u>Other Objects</u></b>		
830 Interest		52,663.80
880 Refunds of Prior Years' Receipts		597.75
<b>Total Other Objects</b>		<b>\$53,261.55</b>
<b>900 <u>Other Uses of Funds</u></b>		
910 Redemption of Principal		770,000.00
932 Capital Reserve Fund Transfers Applicable To Fund 32		2,000,000.00
<b>Total Other Uses of Funds</b>		<b>\$2,770,000.00</b>
<b>Total 5000 Other Expenditures and Financing Uses</b>		<b>\$2,823,261.55</b>

LEA : 111317503     Southern Huntingdon County SD

Printed 12/10/2019 2:56:43 PM

General Fund (10)				
5100 Debt Service / Other Expenditures and Financing Uses	<u>Elementary</u>	<u>Secondary</u>	<u>Federal</u>	<u>Total</u>
800 <u>Other Objects</u>				
830 Interest				52,663.80
880 Refunds of Prior Years' Receipts				597.75
Total Other Objects				\$53,261.55
900 <u>Other Uses of Funds</u>				
910 Redemption of Principal				770,000.00
Total Other Uses of Funds				\$770,000.00
Total 5100 Debt Service / Other Expenditures and Financing Uses				\$823,261.55

LEA : 111317503     Southern Huntingdon County SD

Printed 12/10/2019 2:56:43 PM

General Fund (10)				
5110 Debt Service	<u>Elementary</u>	<u>Secondary</u>	<u>Federal</u>	<u>Total</u>
800 <u>Other Objects</u>				
830 Interest				52,663.80
Total Other Objects				\$52,663.80
900 <u>Other Uses of Funds</u>				
910 Redemption of Principal				770,000.00
Total Other Uses of Funds				\$770,000.00
Total 5110 Debt Service				\$822,663.80

LEA : 111317503     Southern Huntingdon County SD

Printed 12/10/2019 2:56:43 PM

General Fund (10)

5130 Refund of Prior Year Revenues / Receipts	<u>Elementary</u>	<u>Secondary</u>	<u>Federal</u>	<u>Total</u>
800 <u>Other Objects</u>				
880 Refunds of Prior Years' Receipts				597.75
Total Other Objects				\$597.75
Total 5130 Refund of Prior Year Revenues / Receipts				\$597.75

General Fund (10)

5200 Interfund Transfers – Out	<u>Elementary</u>	<u>Secondary</u>	<u>Federal</u>	<u>Total</u>
900 <u>Other Uses of Funds</u>				
932 Capital Reserve Fund Transfers Applicable To Fund 32				2,000,000.00
Total Other Uses of Funds				\$2,000,000.00
Total 5200 Interfund Transfers – Out				\$2,000,000.00



General Fund (10)

5230 Capital Projects Fund Transfers	<u>Elementary</u>	<u>Secondary</u>	<u>Federal</u>	<u>Total</u>
900 <u>Other Uses of Funds</u>				
932 Capital Reserve Fund Transfers Applicable To Fund 32				2,000,000.00
Total Other Uses of Funds				\$2,000,000.00
Total 5230 Capital Projects Fund Transfers				\$2,000,000.00

LEA : 111317503     Southern Huntingdon County SD

Printed 12/10/2019 2:56:58 PM

	<u>General Fund(10)</u>	<u>Public Purpose Trust(27)</u>	<u>Other Compt Approved (28)</u>	<u>Athletic / Activity(29)</u>	<u>Capital Reserve (690. 1850)(31)</u>
<b>1000 <u>Instruction</u></b>					
1100 Regular Programs - Elementary / Secondary	6,711,101.01				
1200 Special Programs - Elementary / Secondary	2,406,942.69				
1300 Vocational Education	867,001.89				
1400 Other Instructional Programs - Elementary / Secondary	213,818.98				
<b>Total Instruction</b>	<b>\$10,198,864.57</b>				
<b>2000 <u>Support Services</u></b>					
2100 Support Services - Students	458,114.83				
2200 Support Services - Instructional Staff	642,742.74				
2300 Support Services - Administration	1,074,496.10				
2400 Support Services - Pupil Health	197,443.32				
2500 Support Services - Business	300,004.22				
2600 Operation and Maintenance of Plant Services	1,690,132.91				
2700 Student Transportation Services	1,316,282.65				
2800 Support Services - Central	2,116.20				
2900 Other Support Services	160.00				
<b>Total Support Services</b>	<b>\$5,681,492.97</b>				
<b>3000 <u>Operation of Non-Instructional Services</u></b>					
3200 Student Activities	282,931.37				
<b>Total Operation of Non-Instructional Services</b>	<b>\$282,931.37</b>				
<b>5000 <u>Other Expenditures and Financing Uses</u></b>					
5100 Debt Service / Other Expenditures and Financing Uses	823,261.55				
5200 Interfund Transfers - Out	2,000,000.00				
<b>Total Other Expenditures and Financing Uses</b>	<b>\$2,823,261.55</b>				
<b>TOTAL ACTUAL EXPENDITURES &amp; OTHER FINANCING USES</b>	<b>\$18,986,550.46</b>				

LEA : 111317503     Southern Huntingdon County SD

Printed 12/10/2019 2:56:58 PM

	<u>Capital Reserve (1431)(32)</u>	<u>Other Capital Projects Fund(39)</u>	<u>Debt Service(40)</u>	<u>Permanent(90)</u>	<u>Total</u>
<b>1000 <u>Instruction</u></b>					
1100 Regular Programs - Elementary / Secondary					6,711,101.01
1200 Special Programs - Elementary / Secondary					2,406,942.69
1300 Vocational Education					867,001.89
1400 Other Instructional Programs - Elementary / Secondary					213,818.98
<b>Total Instruction</b>					<b>\$10,198,864.57</b>
<b>2000 <u>Support Services</u></b>					
2100 Support Services - Students					458,114.83
2200 Support Services - Instructional Staff					642,742.74
2300 Support Services - Administration					1,074,496.10
2400 Support Services - Pupil Health					197,443.32
2500 Support Services - Business					300,004.22
2600 Operation and Maintenance of Plant Services					1,690,132.91
2700 Student Transportation Services					1,316,282.65
2800 Support Services - Central					2,116.20
2900 Other Support Services					160.00
<b>Total Support Services</b>					<b>\$5,681,492.97</b>
<b>3000 <u>Operation of Non-Instructional Services</u></b>					
3200 Student Activities					282,931.37
<b>Total Operation of Non-Instructional Services</b>					<b>\$282,931.37</b>
<b>5000 <u>Other Expenditures and Financing Uses</u></b>					
5100 Debt Service / Other Expenditures and Financing Uses					823,261.55
5200 Interfund Transfers - Out					2,000,000.00
<b>Total Other Expenditures and Financing Uses</b>					<b>\$2,823,261.55</b>
<b>TOTAL ACTUAL EXPENDITURES &amp; OTHER FINANCING USES</b>					<b>\$18,986,550.46</b>

LEA : 111317503     Southern Huntingdon County SD

Printed 12/10/2019 2:57:06 PM

PSERS Salary Data (Salary Data should relate to the General Fund only)

Amount	Description	Amount
	Total Salary Base for salaries subject to PSERS withholding	6,718,513.20
	Total Federally Funded salaries subject to PSERS withholding	372,515.97

Title I Expenditure Data

Amount	Description	Amount
	Expenditures Funded with Current Title I Funds	282,361.59
	Expenditures Funded with Carry over Title I Funds	
Total	Title I Expenditure Data	\$282,361.59

Benefits for Staff Relative to Collective Bargaining Agreements

	OBJECT	COVERED	NOT COVERED	TOTAL
10 General Fund	No Self Insurance data to report			
	211 Medical Insurance	1,111,894.12	266,381.43	1,378,275.55
	212 Dental Insurance	20,887.63	4,303.26	25,190.89
	215 Eye Care Insurance			
	216 Prescription Insurance			
	271 Self-Insurance Medical Benefits			
	272 Self-Insurance Dental Benefits			
	275 Self-Insurance Eye Care Benefits			
	276 Self-Insurance Prescription Benefits			
	FUND TOTAL	\$1,132,781.75	\$270,684.69	\$1,403,466.44
50 Enterprise Fund	No Self Insurance data to report			
	211 Medical Insurance			
	212 Dental Insurance			
	215 Eye Care Insurance			
	216 Prescription Insurance			
	271 Self-Insurance Medical Benefits			
	272 Self-Insurance Dental Benefits			
	275 Self-Insurance Eye Care Benefits			
	276 Self-Insurance Prescription Benefits			
	FUND TOTAL			
60 Internal Service Fund	No Self Insurance data to report			
	211 Medical Insurance			
	212 Dental Insurance			
	215 Eye Care Insurance			
	216 Prescription Insurance			
	271 Self-Insurance Medical Benefits			
	272 Self-Insurance Dental Benefits			
	275 Self-Insurance Eye Care Benefits			
	276 Self-Insurance Prescription Benefits			
	FUND TOTAL			
Total of All Funds		\$1,132,781.75	\$270,684.69	\$1,403,466.44

LEA : 111317503     Southern Huntingdon County SD

Printed 12/10/2019 2:57:12 PM

Function	Special Education (Prior Year)	Nonspecial Education (Prior Year)	Total (Prior Year)	Special Education (Current Year)	Nonspecial Education (Current Year)	Total (Current Year)
2120 Guidance Services	206,701.17	68,900.39	275,601.56	267,442.52	89,147.51	356,590.03
2140 Psychological Services	72,964.07	24,321.22	97,285.29	76,143.60	25,381.20	101,524.80
2150 Speech Pathology and Audiology Services						
2160 Social Work Services						
2260 Instruction and Curriculum Development Services						
2350 Legal and Accounting Services						
2420 Medical Services						
2440 Nursing Services	48,943.63	146,830.92	195,774.55	49,360.83	148,082.49	197,443.32
2700 Student Transportation Services	363,244.86	884,718.07	1,247,962.93	396,811.23	919,471.42	1,316,282.65
Total	\$691,853.73	\$1,124,770.60	\$1,816,624.33	\$789,758.18	\$1,182,082.62	\$1,971,840.80

LEA : 111317503     Southern Huntingdon County SD

Printed 12/10/2019 2:57:15 PM

(PRINCIPAL AMOUNTS ONLY)

**GOVERNMENTAL FUNDS/ ACTIVITIES**

	Short-Term Borrowing	General Obligation Bonds/Notes	Authority Building Obligations	Other Long-Term Debt	Other Post- Employment Benefits (OPEB)	Compensated Absences	Net Pension Liability	Total
1. Debt at Beginning of Fiscal Year		3,180,000.00			3,771,922.00	220,270.00	23,738,594.00	30,910,786.00
2. Additional Debt Incurred During Year					24,942.00			24,942.00
3. Retirements and Repayments		770,000.00				20,929.00	1,408,000.00	2,198,929.00
4. Debt at End of Fiscal Year		2,410,000.00			3,796,864.00	199,341.00	22,330,594.00	28,736,799.00
5. Accreted Interest at End Of Fiscal Year								
6. Total Debt and Accreted Interest		2,410,000.00			3,796,864.00	199,341.00	22,330,594.00	28,736,799.00
7. Current Portion P&I - Due within 1 year		805,000.00						805,000.00
8. Interest Paid during current fiscal year		52,825.50						52,825.50

(PRINCIPAL AMOUNTS ONLY)

**PROPRIETARY FUNDS**

	Short-Term Borrowing	General Obligation Bonds/Notes	Authority Building Obligations	Other Long-Term Debt	Other Post- Employment Benefits (OPEB)	Compensated Absences	Net Pension Liability	Total
1. Debt at Beginning of Fiscal Year					32,000.00	1,388.00	758,406.00	791,794.00
2. Additional Debt Incurred During Year								
3. Retirements and Repayments						1,085.00	47,000.00	48,085.00
4. Debt at End of Fiscal Year					32,000.00	303.00	711,406.00	743,709.00
5. Accreted Interest at End Of Fiscal Year								
6. Total Debt and Accreted Interest					32,000.00	303.00	711,406.00	743,709.00
7. Current Portion P&I - Due within 1 year								
8. Interest Paid during current fiscal year								

LEA : 111317503     Southern Huntingdon County SD

Printed 12/10/2019 2:57:15 PM

Total Principal and Interest Payments Made by Your School - All Funds

Function	Fund		Principal (910)	Principal (920)	Interest (830)	Total (Principal +Interest)	Misc Other Uses (990)
5110	10	General Fund	770,000.00		52,663.80	822,663.80	
5110	20	Special Revenue Funds					
5110	30	Capital Projects Funds					
5110	40	Debt Service Fund					
5110	90	Permanent Fund					
5120	10	General Fund					
5120	20	Special Revenue Funds					
5120	30	Capital Projects Funds					
5120	40	Debt Service Fund					
Total Debt Payments - Governmental Funds			\$770,000.00		\$52,663.80	\$822,663.80	

Function	Fund		Principal (910)	Principal (920)	Interest (830)	Total (Principal +Interest)
5110	50	Enterprise Fund				
5110	60	Internal Service Fund				
5120	50	Enterprise Fund				
5120	60	Internal Service Fund				
Total Debt Payments - Proprietary Funds						



LEA : 111317503     Southern Huntingdon County SD

Printed 12/10/2019 2:57:15 PM

**Debt Details**  
**Governmental Funds/ Activities**

Debt Category	Debt Issue Date (MM/YYYY)	Principal Amounts Only				Current Portion Due Within One Year (Principal and Interest)	Interest Paid During Fiscal Year
		Debt at Beginning of Fiscal Year	Additions	Reductions / Repayments	Debt at End of Fiscal Year		
General Obligation Bonds/Notes – CIB	09/2015	3,180,000.00		770,000.00	2,410,000.00	805,000.00	52,825.50
Compensated Absences		220,270.00		20,929.00	199,341.00		
Other Post-Employment Benefits (OPEB)		3,771,922.00	24,942.00		3,796,864.00		
Net Pension Liability		23,738,594.00		1,408,000.00	22,330,594.00		
<b>Totals for Debt Entered:</b>		<b>\$30,910,786.00</b>	<b>\$24,942.00</b>	<b>\$2,198,929.00</b>	<b>\$28,736,799.00</b>	<b>\$805,000.00</b>	<b>\$52,825.50</b>

**Bond Details**  
**Proprietary Funds**

Debt Category	Debt Issue Date (MM/YYYY)	Principal Amounts Only				Current Portion Due Within One Year (Principal and Interest)	Interest Paid During Fiscal Year
		Debt at Beginning of Fiscal Year	Additions	Reductions / Repayments	Debt at End of Fiscal Year		
Compensated Absences		1,388.00		1,085.00	303.00		
Other Post-Employment Benefits (OPEB)		32,000.00			32,000.00		
Net Pension Liability		758,406.00		47,000.00	711,406.00		
<b>Totals for Debt Entered:</b>		<b>\$791,794.00</b>		<b>\$48,085.00</b>	<b>\$743,709.00</b>		

LEA : 111317503     Southern Huntingdon County SD

Printed 12/10/2019 2:57:17 PM

**General Fund (10)**

Section 1: Tuition/Purchased Services as Reported within Expenditure Detail	Amount
Tuition Reported in General Fund Expenditures 1000-560	1,816,935.64
Purchased Services in General Fund Expenditures 1000-594 and 1000-597	29,250.60
<b>Section 1 Total</b>	<b>\$1,846,186.24</b>

Section 2: Tuition Paid to Institution Types During Fiscal Year	Tuition Paid For Nonspecial Education	Tuition Paid For Special Education	Total
1    1306 Institutions			
2    Institutionalized Children's Programs			
3    Juveniles Incarcerated in Adult Facilities			
4    Residential Treatment Facilities			
5    Other Local Education Agencies	32,975.27	766,475.70	799,450.97
6    Brick and Mortar Charter Schools			
7    Cyber Charter Schools	161,571.48	141,466.33	303,037.81
8    Career and Technology Centers	557,186.04		557,186.04
9    Approved Private Schools			
10   PA Chartered Schools for the Deaf and Blind		45,615.22	45,615.22
11   Private Residential Rehabilitative Institutions	33,451.96	51,139.52	84,591.48
12   Juvenile Detention Centers			
13   Special Program Jointures			
14   Other Tuition Not Included Elsewhere In This Section	5,071.88	51,232.84	56,304.72
<b>Section 2 Total</b>	<b>\$790,256.63</b>	<b>\$1,055,929.61</b>	<b>\$1,846,186.24</b>

LEA : 111317503     Southern Huntingdon County SD

Printed 12/10/2019 2:57:20 PM

Food Service / Cafeteria Operations Fund (51)

3000 Operation of Non-Instructional Services		<u>Total</u>
100 <u>Personnel Services – Salaries</u>		
100 Personnel Services – Salaries		355,941.00
Total Personnel Services – Salaries		\$355,941.00
500 <u>Other Purchased Services</u>		
570 Food Service Management		144,553.00
Total Other Purchased Services		\$144,553.00
600 <u>Supplies</u>		
630 Food		266,065.00
Total Supplies		\$266,065.00
700 <u>Property</u>		
740 Depreciation		2,012.00
Total Property		\$2,012.00
800 <u>Other Objects</u>		
890 Miscellaneous Expenditures		45.00
Total Other Objects		\$45.00
Total 3000 Operation of Non-Instructional Services		\$768,616.00

Food Service / Cafeteria Operations Fund (51)

3100 Food Services	<u>Elementary</u>	<u>Secondary</u>	<u>Federal</u>	<u>Total</u>
100 <u>Personnel Services – Salaries</u>				
100 Personnel Services – Salaries				355,941.00
Total Personnel Services – Salaries				\$355,941.00
500 <u>Other Purchased Services</u>				
570 Food Service Management				144,553.00
Total Other Purchased Services				\$144,553.00
600 <u>Supplies</u>				
630 Food				266,065.00
Total Supplies				\$266,065.00
700 <u>Property</u>				
740 Depreciation				2,012.00
Total Property				\$2,012.00
800 <u>Other Objects</u>				
890 Miscellaneous Expenditures				45.00
Total Other Objects				\$45.00
Total 3100 Food Services				\$768,616.00

	<u>Food Service(51)</u>	<u>Child Care Operations(52)</u>	<u>Other Enterprise(58)</u>	<u>Internal Service(60)</u>	<u>Total</u>
<b>3000 <u>Operation of Non-Instructional Services</u></b>					
3100 Food Services	768,616.00				768,616.00
<b>Total Operation of Non-Instructional Services</b>	<b>\$768,616.00</b>				<b>\$768,616.00</b>
<b>TOTAL ACTUAL EXPENDITURES &amp; OTHER FINANCING USES</b>	<b>\$768,616.00</b>				<b>\$768,616.00</b>

LEA : 111317503     Southern Huntingdon County SD

Printed 12/10/2019 2:57:34 PM

Fund	School	School Number	Local Personnel	Local Nonpersonnel	State Personnel	State Nonpersonnel	Federal Personnel	Federal Nonpersonnel	Total	Explanation
10										
	Rockhill El Sch	2309	353,430.03	91,111.60	717,570.05	184,984.16	94,330.11		1,441,425.95	
	Shade Gap El Sch	2310	312,811.69	73,090.20	635,102.51	148,395.24	78,365.70		1,247,765.34	
	Southern Huntingdon Co HS/MS	2313	1,492,054.34	3,029,322.44	728,228.97	1,478,525.48	143,345.00		6,871,476.23	
	Spring Farms El Sch	2312	490,162.31	69,136.54	995,178.02	140,368.13	81,041.75		1,775,886.75	
Total			2,648,458.37	3,262,660.78	3,076,079.55	1,952,273.01	397,082.56		11,336,554.27	