

LEA Name : Southern Huntingdon County SD
Address : 10339 Pogue Road
Three Springs , PA 17264

County : Huntingdon
AUN Number : 111317503
LEA Type : SD

Annual Financial Report Accuracy Certification Statement

For Fiscal Year Ending
6/30/2018

Pennsylvania Department of Education
&
Office of Comptroller Operations

PDE-2056: Intermediate Unit
PDE-2057: School District, AVTS/CTC, Charter School,
and Special Program Jointure

CERTIFICATION: By signing this page I agree that the electronic data submitted is a complete and accurate statement of the financial operations and status of the local education agency for the fiscal year. It has been prepared in accordance with generally accepted accounting principles and established Commonwealth of PA reporting guidelines.



Chief School Administrator Signature

10/31/2018

Date



Board Secretary Signature

10/31/2018

Date

LuAnne Keebaugh

Contact Person

lkeebaugh@shcsd.org

Contact Person E-mail Address

(814)447-5529

Ext :2603

Contact Person Telephone Number

(814)447-3967

Contact Person Fax Number

Audit Certification
Annual Financial Report:
For Fiscal Year Ending **6/30/2018**
(Pursuant to PA School Code Section 218(b))

LEA Name : Southern Huntingdon County SD
AUN Number : 111317503
County : Huntingdon

Audit Certification Due:
12/31/2018

This certification is applicable to the Annual Financial Report data submitted
through the Consolidated Financial Reporting System on: 10/31/18

Date

Auditing Firm:

Boyer & Ritter
1600 University Drive

State College , PA , 16801-

Auditor Contact Name: Romulus C Comly

Auditor Phone: (814)234-6919

Auditor E-mail: rcomly@cpabr.com

CERTIFICATION: By signing this page I agree that the financial statements of the school have been properly audited as noted above pursuant to Article XXIV, and in the auditor's professional opinion, the Annual Financial Report (PDE-2057) submitted on the date referenced is materially consistent with the audited financial statements.

Chief School Administrator


Signature

12/17/18
Date

Board Secretary


Signature

12/17/18
Date

LuAnne Keebaugh

Contact Person

lkeebaugh@shcsd.org

Contact Person E-mail Address

(814)447-5529

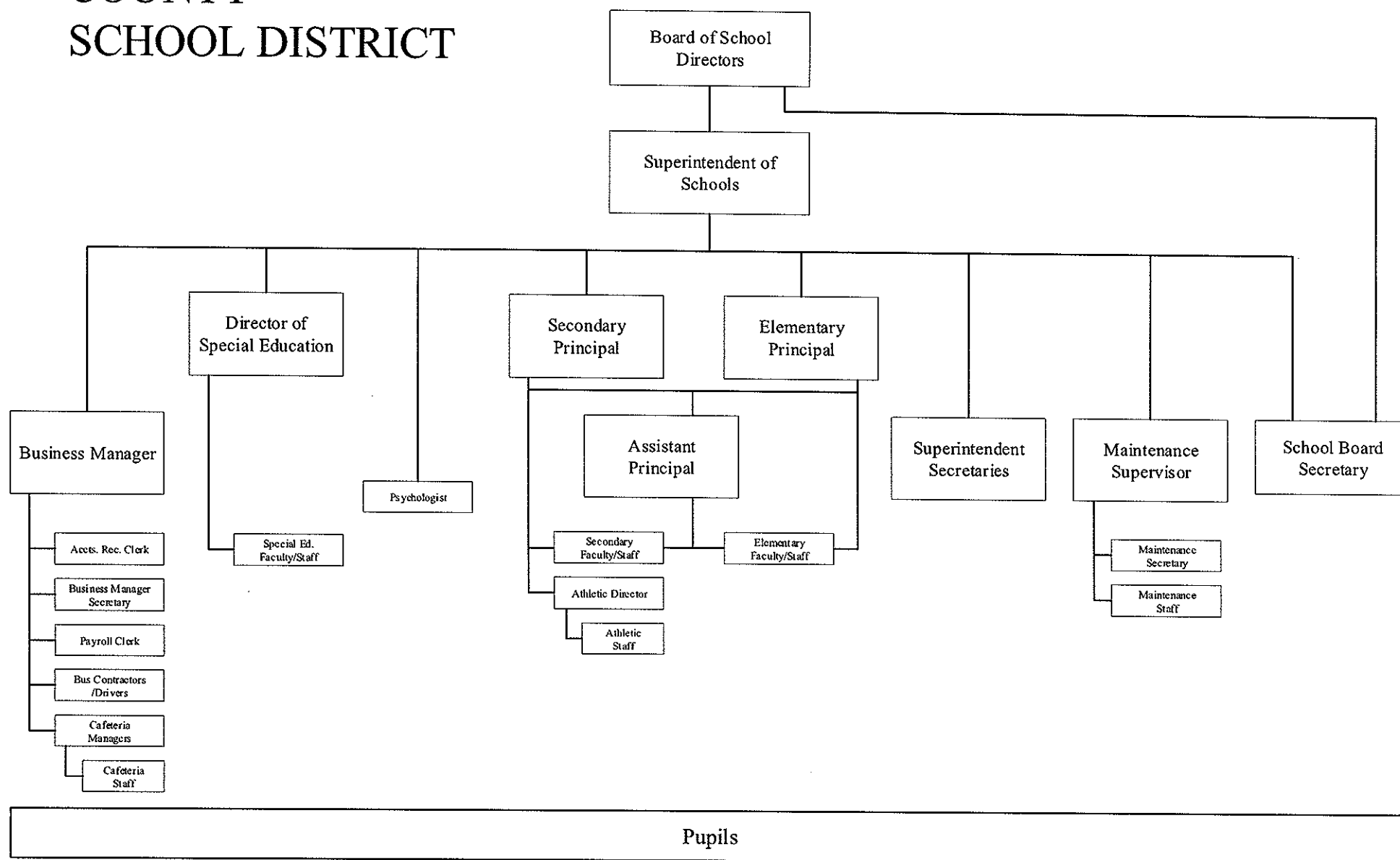
Ext :2603

Contact Person Telephone Number

(814)447-3967

Contact Person Fax Number

SECTION: LOCAL BOARD PROCEDURES
TITLE: ORGANIZATION CHART



Amounts Expressed in Whole Dollars		<u>General Fund</u> <u>(10)</u>	<u>Public Purpose Trust</u> <u>(27)</u>	<u>Other Compt Approved</u> <u>(28)</u>	<u>Athletic / Activity</u> <u>(29)</u>	<u>Capital Reserve (690.</u> <u>1850)</u> <u>(31)</u>
Assets And Deferred Outflows Of Resources						
Assets						
0100	Cash and Cash Equivalents	2,944,531				
0110	Investments	5,087,113				
0120	Taxes Receivable	626,259				
0130	Due From Other Funds	73,223				
0141	Due From Other Governments					
0142	State Revenue Receivable	694,075				
0143	Federal Revenue Receivable	128,654				
0145	Other Intergovernmental Revenue Receivable	103,947				
0146	Due from Primary Government					
0147	Due from Component Unit					
0150	Other Receivables					
0170	Inventories					
0180	Prepaid Expenses (Expenditures)					
0190	Other Current Assets					
Total Assets		\$9,657,802				
0910	Deferred Outflows of Resources					
Total Assets And Deferred Outflows Of Resources		\$9,657,802				

LEA : 111317503 Southern Huntingdon County SD

Printed 3/8/2019 1:27:35 PM

Amounts Expressed in Whole Dollars		<u>Capital Reserve (1431</u> <u>(32)</u>	<u>Other Capital Projects</u> <u>Fund</u> <u>(39)</u>	<u>Debt Service</u> <u>(40)</u>	<u>Permanent</u> <u>(90)</u>	<u>Total Governmental</u> <u>Funds</u>
Assets And Deferred Outflows Of Resources						
Assets						
0100	Cash and Cash Equivalents	512,943				3,457,474
0110	Investments	2,599,433				7,686,546
0120	Taxes Receivable					626,259
0130	Due From Other Funds					73,223
0141	Due From Other Governments					
0142	State Revenue Receivable					694,075
0143	Federal Revenue Receivable					128,654
0145	Other Intergovernmental Revenue Receivable					103,947
0146	Due from Primary Government					
0147	Due from Component Unit					
0150	Other Receivables					
0170	Inventories					
0180	Prepaid Expenses (Expenditures)					
0190	Other Current Assets					
Total Assets		\$3,112,376				\$12,770,178
0910	Deferred Outflows of Resources					
Total Assets And Deferred Outflows Of Resources		\$3,112,376				\$12,770,178

LEA : 111317503 Southern Huntingdon County SD

Printed 3/8/2019 1:27:35 PM

Amounts Expressed in Whole Dollars		<u>General Fund</u> <u>(10)</u>	<u>Public Purpose Trust</u> <u>(27)</u>	<u>Other Compt Approved</u> <u>(28)</u>	<u>Athletic / Activity</u> <u>(29)</u>	<u>Capital Reserve (690.</u> <u>1850)</u> <u>(31)</u>
Liabilities And Deferred Inflows Of Resources And Fund Balances						
Liabilities						
0400	Due to Other Funds					
0411	Due to Other Governments					
0412	Due to Primary Government					
0413	Due to Component Unit					
0420	Accounts Payable	318,892				
0430	Contracts Payable					
0440	Current Portion of Long-Term Debt					
0450	Short-Term Payables					
0461	Accrued Salaries and Benefits	1,225,576				
0462	Payroll Deductions and Withholding	21,833				
0480	Unearned Revenues	10,526				
0490	Other Current Liabilities					
Total Liabilities		\$1,576,827				
0950	Deferred Inflows of Resources	428,508				
Fund Balances						
0810	Nonspendable Fund Balance					
0820	Restricted Fund Balance					
0830	Committed Fund Balance					
0840	Assigned Fund Balance	6,515,449				
0850	Unassigned Fund Balance	1,137,018				
Total Fund Balances		\$7,652,467				
Total Liabilities, Deferred Inflows Of Resources And Fund Balances		\$9,657,802				

LEA : 111317503 Southern Huntingdon County SD

Printed 3/8/2019 1:27:35 PM

Amounts Expressed in Whole Dollars	<u>Capital Reserve (1431)</u> <u>(32)</u>	<u>Other Capital Projects</u> <u>Fund</u> <u>(39)</u>	<u>Debt Service</u> <u>(40)</u>	<u>Permanent</u> <u>(90)</u>	<u>Total Governmental</u> <u>Funds</u>
Liabilities And Deferred Inflows Of Resources And Fund Balances					
Liabilities					
0400 Due to Other Funds					
0411 Due to Other Governments					
0412 Due to Primary Government					
0413 Due to Component Unit					
0420 Accounts Payable					318,892
0430 Contracts Payable					
0440 Current Portion of Long-Term Debt					
0450 Short-Term Payables					
0461 Accrued Salaries and Benefits					1,225,576
0462 Payroll Deductions and Withholding					21,833
0480 Unearned Revenues					10,526
0490 Other Current Liabilities					
Total Liabilities					\$1,576,827
0950 Deferred Inflows of Resources					428,508
Fund Balances					
0810 Nonspendable Fund Balance					
0820 Restricted Fund Balance	3,112,376				3,112,376
0830 Committed Fund Balance					
0840 Assigned Fund Balance					6,515,449
0850 Unassigned Fund Balance					1,137,018
Total Fund Balances	\$3,112,376				\$10,764,843
Total Liabilities, Deferred Inflows Of Resources And Fund Balances	\$3,112,376				\$12,770,178

Amounts Expressed in Whole Dollars		<u>General Fund</u> <u>(10)</u>	<u>Public Purpose Trust</u> <u>(27)</u>	<u>Other Compt Approved</u> <u>(28)</u>	<u>Athletic / Activity</u> <u>(29)</u>	<u>Capital Reserve (690.</u> <u>1850)</u> <u>(31)</u>
Revenues						
6000	Revenue from Local Sources	5,688,945				
7000	Revenue from State Sources	11,029,706				
8000	Revenue from Federal Sources	527,638				
Total Revenues		\$17,246,289				
Expenditures						
1000	Instruction	9,719,051				
2000	Support Services	5,424,137				
3000	Operation of Non-Instructional Services	242,676				
4000	Facilities Acquisition, Construction and Improvement Services					
5110	Debt Service	827,284				
5130	Refund of Prior Year Revenues / Receipts					
Total Expenditures		\$16,213,148				
Excess (Deficiency) Of Revenues Over Expenditures		\$1,033,141				
Other Financing Sources (Uses)						
9110	Face Value of Bonds Issued					
9120	Proceeds from Refunding of Bonds					
9130	Bond Premiums					
9200	Proceeds from Extended-Term Financing					
9300	Interfund Transfers - IN					
9400	Sale of or Compensation for Loss of Fixed Assets					
9710	Transfers from Component Units					
9720	Transfers from Primary Governments					
9910	Other Financing Sources Not Listed in the 9000 Series					
9990	Insurance Recoveries					
5120	Debt Service – Refunded Bonds					
5150	Bond Discounts					
5200	Interfund Transfers – Out	6,944				
5300	Transfers Out to Component Units/Primary Governments					
Total Other Financing Sources (Uses)		(\$6,944)				

Amounts Expressed in Whole Dollars		<u>Capital Reserve (1431)</u> <u>(32)</u>	<u>Other Capital Projects</u> <u>Fund</u> <u>(39)</u>	<u>Debt Service</u> <u>(40)</u>	<u>Permanent</u> <u>(90)</u>	<u>Total Governmental</u> <u>Funds</u>
Revenues						
6000	Revenue from Local Sources	28,864				5,717,809
7000	Revenue from State Sources					11,029,706
8000	Revenue from Federal Sources					527,638
Total Revenues		\$28,864				\$17,275,153
Expenditures						
1000	Instruction					9,719,051
2000	Support Services					5,424,137
3000	Operation of Non-Instructional Services					242,676
4000	Facilities Acquisition, Construction and Improvement Services					
5110	Debt Service					827,284
5130	Refund of Prior Year Revenues / Receipts					
Total Expenditures						\$16,213,148
Excess (Deficiency) Of Revenues Over Expenditures		\$28,864				\$1,062,005
Other Financing Sources (Uses)						
9110	Face Value of Bonds Issued					
9120	Proceeds from Refunding of Bonds					
9130	Bond Premiums					
9200	Proceeds from Extended-Term Financing					
9300	Interfund Transfers - IN					
9400	Sale of or Compensation for Loss of Fixed Assets					
9710	Transfers from Component Units					
9720	Transfers from Primary Governments					
9910	Other Financing Sources Not Listed in the 9000 Series					
9990	Insurance Recoveries					
5120	Debt Service – Refunded Bonds					
5150	Bond Discounts					
5200	Interfund Transfers – Out					6,944
5300	Transfers Out to Component Units/Primary Governments					
Total Other Financing Sources (Uses)						(\$6,944)

Amounts Expressed in Whole Dollars		<u>General Fund</u> <u>(10)</u>	<u>Public Purpose Trust</u> <u>(27)</u>	<u>Other Compt Approved</u> <u>(28)</u>	<u>Athletic / Activity</u> <u>(29)</u>	<u>Capital Reserve</u> <u>(690.</u> <u>1850)</u> <u>(31)</u>
Special And Extraordinary Items						
9920	Special Items – Gains					
9930	Extraordinary Items – Gains					
5520	Special Items – Losses					
5530	Extraordinary Items – Losses					
Net Change In Fund Balances		\$1,026,197				
Fund Balance						
0001	Fund Balance - Beginning of Fiscal Year	6,626,270				
Fund Balance - End Of Year		\$7,652,467				

Amounts Expressed in Whole Dollars		<u>Capital Reserve (1431)</u> <u>(32)</u>	<u>Other Capital Projects</u> <u>Fund</u> <u>(39)</u>	<u>Debt Service</u> <u>(40)</u>	<u>Permanent</u> <u>(90)</u>	<u>Total Governmental</u> <u>Funds</u>
Special And Extraordinary Items						
9920	Special Items – Gains					
9930	Extraordinary Items – Gains					
5520	Special Items – Losses					
5530	Extraordinary Items – Losses					
Net Change In Fund Balances		\$28,864				\$1,055,061
Fund Balance						
0001	Fund Balance - Beginning of Fiscal Year	3,083,512				9,709,782
Fund Balance - End Of Year		\$3,112,376				\$10,764,843

Amounts Expressed in Whole Dollars		<u>Food Service</u> <u>(51)</u>	<u>Child Care</u> <u>Operations</u> <u>(52)</u>	<u>Other Enterprise</u> <u>(58)</u>	<u>TOTAL</u>	<u>Internal Service</u> <u>(60)</u>
Assets And Deferred Outflows Of Resources						
Current Assets						
0100	Cash and Cash Equivalents	31,439			31,439	
0110	Investments	1,964			1,964	
0130	Due From Other Funds					
0141	Due From Other Governments					
0142	State Revenue Receivable	2,574			2,574	
0143	Federal Revenue Receivable	39,341			39,341	
0146	Due from Primary Government					
0147	Due from Component Unit					
0150	Other Receivables					
0170	Inventories	19,216			19,216	
0180	Prepaid Expenses (Expenditures)					
0190	Other Current Assets					
Total Current Assets		\$94,534			\$94,534	
Noncurrent Assets						
0211	Land					
0212	Site Improvements (Net)					
0220	Buildings and Building Improvements (Net)					
0230	Machinery, Equipment and Furniture (Net)	19,413			19,413	
0250	Construction in Progress					
0260	Long Term Prepayments					
0290	Other Noncurrent Assets					
Total Noncurrent Assets		\$19,413			\$19,413	
0910	Deferred Outflows of Resources	157,167			157,167	
Total Assets And Deferred Outflows Of Resources		\$271,114			\$271,114	

LEA : 111317503 Southern Huntingdon County SD

Printed 3/8/2019 1:27:40 PM

Amounts Expressed in Whole Dollars	Food Service (51)	Child Care Operations (52)	Other Enterprise (58)	TOTAL	Internal Service (60)
Liabilities And Deferred Inflows Of Resources And Net Position					
Current Liabilities					
0400 Due to Other Funds	73,223			73,223	
0411 Due to Other Governments					
0413 Due to Component Unit					
0420 Accounts Payable					
0430 Contracts Payable					
0440 Current Portion of Long-Term Debt					
0450 Short-Term Payables					
0461 Accrued Salaries and Benefits					
0462 Payroll Deductions and Withholding					
0480 Unearned Revenues	14,709			14,709	
0490 Other Current Liabilities					
Total Current Liabilities	\$87,932			\$87,932	
Noncurrent Liabilities					
0510 Bonds Payable					
0520 Extended-Term Financing Agreements Payable					
0530 Lease-Purchase Obligations					
0540 Accumulated Compensated Absences					
0550 Authority Lease Obligations					
0560 Other Post-Employment Benefits (OPEB)	1,388			1,388	
0570 Net Pension Liability	790,406			790,406	
0599 Other Noncurrent Liabilities					
Total Noncurrent Liabilities	\$791,794			\$791,794	
Total Liabilities	\$879,726			\$879,726	
0950 Deferred Inflows of Resources	33,222			33,222	
Net Position					
0791 Net Investment in Capital Assets	19,413			19,413	
0008 Restricted Net Position (0792 – 0798)					
0799 Unrestricted Net Position	(661,247)			(661,247)	
Total Net Position	(\$641,834)			(\$641,834)	
Total Liabilities And Deferred Inflows Of Resources And Net Position	\$271,114			\$271,114	

Amounts Expressed in Whole Dollars	Food Service (51)	Child Care Operations (52)	Other Enterprise (58)	TOTAL	Internal Service (60)
Operating Revenues					
6600 Food Service Revenue	301,207			301,207	
0071 Charges for Services					
0072 Other Operating Revenue					
Total Operating Revenues	\$301,207			\$301,207	
Operating Expenses					
100 Personnel Services – Salaries	208,092			208,092	
200 Personnel Services – Employee Benefits	168,458			168,458	
300 Purchased Professional and Technical Services					
400 Purchased Property Services					
500 Other Purchased Services	89,725			89,725	
600 Supplies	268,083			268,083	
740 Depreciation	2,697			2,697	
810 Dues and Fees	44,319			44,319	
890 Miscellaneous Expenditures	225			225	
Total Operating Expenses	\$781,599			\$781,599	
Operating Income (Loss)	(\$480,392)			(\$480,392)	
Non Operating Revenues (Expenses)					
6500 Earnings on Investments	2,320			2,320	
6920 Contributions and Donations from Private Sources	44,319			44,319	
6930 Gains or Losses on Sale of Fixed Assets					
6991 Refunds of a Prior Year Expenditure					
7000 Revenue from State Sources	65,178			65,178	
8000 Revenue from Federal Sources	359,924			359,924	
820 Claims and Judgments Against the LEA					
830 Interest					
TOTAL Non Operating Revenues (Expenses)	\$471,741			\$471,741	
Income (Loss) Before Contributions And Transfers	(\$8,651)			(\$8,651)	

Amounts Expressed in Whole Dollars	<u>Food Service</u> <u>(51)</u>	<u>Child Care Operations</u> <u>(52)</u>	<u>Other Enterprise</u> <u>(58)</u>	<u>TOTAL</u>	<u>Internal Service</u> <u>(60)</u>
Contributions, Transfers, and Special and Extraordinary Items					
5200 Interfund Transfers – Out					
5300 Transfers Out to Component Units/Primary Governments					
5520 Special Items – Losses					
5530 Extraordinary Items – Losses					
9300 Interfund Transfers - IN	6,944			6,944	
9500 Capital Contributions					
9700 Transfers IN From Component Units/Primary Governments					
9920 Special Items – Gains					
9930 Extraordinary Items – Gains					
Change In Net Position	(\$1,707)			(\$1,707)	
0002 Net Position - Beginning of Fiscal Year	(645,491)			(645,491)	
0003 Accounting Changes / Residual Equity Transfers	5,364			5,364	
Net Position - End Of Year	(\$641,834)			(\$641,834)	

LEA : 111317503 Southern Huntingdon County SD

Printed 3/8/2019 1:27:46 PM

Amounts Expressed in Whole Dollars	Food Service (51)	Child Care Operations (52)	Other Enterprise (58)	TOTAL	Internal Service(60)
Cash Flows From Operating Activities					
0011 Cash Receipts From Users	301,841			301,841	
0012 Cash Receipts From Assessments Made to Other Funds					
0013 Cash Receipts From Earnings on Investments					
0014 Cash Receipts From Other Operating Revenue					
0015 Cash Payments To Employees For Services	361,786			361,786	
0016 Cash Payments For Insurance Claims					
0017 Cash Payments To Suppliers For Goods and Services	366,331			366,331	
0018 Cash Payments For Other Operating Expenses					
Net Cash Provided By (Used For) Operating Activities	(\$426,276)			(\$426,276)	
Cash Flows From Non-Capital Financing Activities					
0021 Receipts From Local Sources - 6000					
0022 Receipts From State Sources - 7000	62,604			62,604	
0023 Receipts From Federal Sources -8000	320,583			320,583	
0024 Notes and Loans Received (Repaid)					
0025 Interest Paid on Notes/Loans - 5100-830					
0026 Operating Transfers In (Out)/Residual Equity Trans					
0027 Operating Transfers In (Out) Primary Government / Comp Unit					
0028 Receipts From Refund of Prior Year Expenditures - 6991					
0029 Special and Extraordinary Gains (losses)					
0030 Receipts from Insurance Recoveries -9990					
Net Cash Prov By (Used for) Non-Capital Financing Activities	\$383,187			\$383,187	
Cash Flows From Capital and Related Financing Activities					
0031 Payments For Fac Acq, Const, and Imp - 4000					
0032 Gain / (Loss) on Sale of Fixed Assets - 6930					
0033 Proceeds From Extended Term Financing - 9200					
0034 Principal Paid on Financing Agreements					
0035 Interest Paid on Financing Agreements - 5100-830					
0036 (Inc) Dec in Contributed Capital					
Net Cash Prov By (Used for) Capital and Related Financing Activities					
Cash Flows From Investing Activities					
0041 Earnings on Investments - 6500	2,320			2,320	
0042 Purchase of Inv Securities / Deposits to Inv Pools	(30)			(30)	
0043 Receipts From Investment Pool Withdrawals					
0044 Proceeds from Sale and Maturity of Inv Securities					

LEA : 111317503 Southern Huntingdon County SD

Printed 3/8/2019 1:27:46 PM

0045 Loans Received (Paid)

Net Cash Prov By (Used for) Investing Activities	\$2,290	\$2,290
--------------------------------------------------	---------	---------

LEA : 111317503 Southern Huntingdon County SD

Printed 3/8/2019 1:27:46 PM

	Food Service (51)	Child Care Operations (52)	Other Enterprise (58)	TOTAL	Internal Service (60)
Net Increase (Decrease) in Cash Flows	(40,799)			(40,799)	
0004 Cash and Cash Equivalents Beginning of Year	72,238			72,238	
Cash and Cash Equivalents at Year End	\$31,439			\$31,439	
Reconciliation of Operating Income (Loss) To Net Cash Provided by (Used For) Operating Activities					
0005 Operating Income (Loss) per REP	(480,392)			(480,392)	
Adjustments					
0051 Depreciation and Net Amortization	2,697			2,697	
0052 Provision for Uncollectible Accounts					
0053 Other Adjustments	44,319			44,319	
Effect of Changes in Assets, Liabilities, Deferred Outflows and Deferred Inflows					
0054 (Inc) Dec In Accounts Receivable (0120-0150)	634			634	
0055 Advances to Other Funds (0160)	(8,278)			(8,278)	
0056 (Inc) Dec in Inventories (0170)	(4,899)			(4,899)	
0057 (Inc) Dec in Prepaid Expenses (0180)					
0058 (Inc) Dec in Other Current or Noncurrent Assets					
0064 Deferred Outflows (0910)	(14,000)			(14,000)	
0059 Inc (Dec) in Accounts Payable (0400-0450)					
0060 Inc (Dec) in Accrued Salaries/Benefits (0461)					
0065 Inc (Dec) in Net Pension Liabilities (0570)	42,001			42,001	
0066 Inc (Dec) in Other Postemp Benefit Oblig (0560)	(237)			(237)	
0061 Inc (Dec) in Payroll Deductions/Withholding (0462)					
0062 Inc (Dec) in Unearned Revenue (0480)	4,879			4,879	
0063 Inc (Dec) in Other Current or Noncurrent Liabilities					
0067 Deferred Inflows (0950)	(13,000)			(13,000)	
Total Adjustments	\$54,116			\$54,116	
Cash Provided By (Used for) Total	(\$426,276)			(\$426,276)	

COMBINED STATEMENT OF CASH FLOWS
SCHEDULE OF NONCASH INVESTING, CAPITAL, AND FINANCING ACTIVITIES

Explanation of Transaction and Balance Sheet Effect	Amount
Total	

LEA : 111317503 Southern Huntingdon County SD

Printed 3/8/2019 1:27:48 PM

Amounts Expressed in Whole Dollars	<u>Private Purpose Trust</u> <u>(71)</u>	<u>Investment Trust</u> <u>(72)</u>	<u>Pension Trust</u> <u>(73)</u>	<u>Activity</u> <u>(81)</u>
Assets And Deferred Outflows Of Resources				
Assets				
0100 Cash and Cash Equivalents	31,931			91,149
0110 Investments	8,936			
0130 Due From Other Funds				
0147 Due from Component Unit				
0150 Other Receivables				
0170 Inventories				
0180 Prepaid Expenses (Expenditures)				
0190 Other Current Assets				
0220 Buildings and Building Improvements (Net)				
0230 Machinery, Equipment and Furniture (Net)				
Total Assets	\$40,867			\$91,149
0910 Deferred Outflows of Resources				
Total Assets And Deferred Outflows Of Resources	\$40,867			\$91,149

LEA : 111317503 Southern Huntingdon County SD

Printed 3/8/2019 1:27:48 PM

Amounts Expressed in Whole Dollars		<u>Other Agency</u> <u>(89)</u>	<u>Discrete Component Units</u> <u>(98)</u>	<u>Discrete Component Units</u> <u>(99)</u>	<u>Total Fiduciary Funds</u>
Assets And Deferred Outflows Of Resources					
Assets					
0100	Cash and Cash Equivalents				123,080
0110	Investments				8,936
0130	Due From Other Funds				
0147	Due from Component Unit				
0150	Other Receivables				
0170	Inventories				
0180	Prepaid Expenses (Expenditures)				
0190	Other Current Assets				
0220	Buildings and Building Improvements (Net)				
0230	Machinery, Equipment and Furniture (Net)				
Total Assets					\$132,016
0910	Deferred Outflows of Resources				
Total Assets And Deferred Outflows Of Resources					\$132,016

LEA : 111317503 Southern Huntingdon County SD

Printed 3/8/2019 1:27:48 PM

Amounts Expressed in Whole Dollars	<u>Private Purpose Trust</u> <u>(71)</u>	<u>Investment Trust</u> <u>(72)</u>	<u>Pension Trust</u> <u>(73)</u>	<u>Activity</u> <u>(81)</u>
Liabilities, Deferred Inflows Of Resources And Net Position				
Liabilities				
0400 Due to Other Funds				91,149
0411 Due to Other Governments				
0412 Due to Primary Government				
0413 Due to Component Unit				
0420 Accounts Payable				
0430 Contracts Payable				
0450 Short-Term Payables				
0461 Accrued Salaries and Benefits				
0462 Payroll Deductions and Withholding				
0480 Unearned Revenues				
0490 Other Current Liabilities				
Total Liabilities				\$91,149
0950 Deferred Inflows of Resources				
Net Position				
0791 Net Investment in Capital Assets				
0009 Restricted Net Position (0792 – 0798)	40,867			
0799 Unrestricted Net Position				
Total Net Position	\$40,867			
Total Liabilities, Deferred Inflows Of Resources And Net Position	\$40,867			\$91,149

LEA : 111317503 Southern Huntingdon County SD

Printed 3/8/2019 1:27:48 PM

Amounts Expressed in Whole Dollars

<u>Other Agency</u> <u>(89)</u>	<u>Discrete Component Units</u> <u>(98)</u>	<u>Discrete Component Units</u> <u>(99)</u>	<u>Total Fiduciary Funds</u>
------------------------------------	------------------------------------------------	------------------------------------------------	------------------------------

Liabilities, Deferred Inflows Of Resources And Net Position

Liabilities

0400 Due to Other Funds			91,149
0411 Due to Other Governments			
0412 Due to Primary Government			
0413 Due to Component Unit			
0420 Accounts Payable			
0430 Contracts Payable			
0450 Short-Term Payables			
0461 Accrued Salaries and Benefits			
0462 Payroll Deductions and Withholding			
0480 Unearned Revenues			
0490 Other Current Liabilities			

Total Liabilities			\$91,149
--------------------------	--	--	-----------------

0950 Deferred Inflows of Resources

Net Position

0791 Net Investment in Capital Assets			
0009 Restricted Net Position (0792 – 0798)			40,867
0799 Unrestricted Net Position			

Total Net Position			\$40,867
---------------------------	--	--	-----------------

Total Liabilities, Deferred Inflows Of Resources And Net Position			\$132,016
--------------------------------------------------------------------------	--	--	------------------

LEA : 111317503 Southern Huntingdon County SD

Printed 3/8/2019 1:27:49 PM

Amounts Expressed in Whole Dollars	<u>Private Purpose Trust</u> <u>(71)</u>	<u>Investment Trust</u> <u>(72)</u>	<u>Pension Trust</u> <u>(73)</u>	<u>Discrete Component</u> <u>Units</u> <u>(98)</u>	<u>Discrete Component</u> <u>Units</u> <u>(99)</u>	<u>Total Fiduciary</u> <u>Funds</u>
Additions						
0091 Gifts and Contributions	3,028					3,028
0092 Other Additions	146					146
Deductions						
0093 Scholarships Awarded	5,300					5,300
0094 Other Deductions						
Change In Net Position	(\$2,126)					(\$2,126)
0006 Net Position – Beginning of Fiscal Year	42,993					42,993
0007 Net Position Held in Trust for Pension Benefits						
Net Position - End of Fiscal Year	\$40,867					\$40,867

	Revenue Reported In Current Year	Current Year Tax Accrual	Prior Year Tax Accrual	Taxes Collected In Current Year
Revenue from Local Sources				
6111 Current Real Estate Taxes	3,617,015.74			3,617,015.74
6113 Public Utility Realty Taxes	4,972.04			4,972.04
6114 Payments in Lieu of Current Taxes - State / Local	27,291.75			27,291.75
6120 Current Per Capita Taxes, Section 679	14,844.45			14,844.45
6141 Current Act 511 Per Capita Taxes	14,844.45			14,844.45
6151 Current Act 511 Earned Income Taxes	730,820.76			730,820.76
6153 Current Act 511 Real Estate Transfer Taxes	67,627.24			67,627.24
6411 Delinquent Real Estate Taxes	466,464.52			466,464.52
6420 Delinquent Per Capita Taxes, Section 679	2,181.07			2,181.07
6440 Delinquent Local Enabling Taxes - Flat Rate Assessments	2,181.08			2,181.08
6500 Earnings on Investments	104,996.62			
6700 Revenues from LEA Activities	59,500.00			
6810 Revenue from Local Governmental Units	96,382.99			
6821 State Revenue Received from Other Pennsylvania Public LEAs	30,970.00			
6831 Federal Revenue Received from Other Pennsylvania Public LEAs	3,906.00			
6832 Federal IDEA Revenue Received as Pass Through	265,292.23			
6910 Rentals	1,970.00			
6942 Summer School Tuition	4,625.00			
6944 Receipts from Other LEAs in Pennsylvania - Education	65,337.41			
6991 Refunds of a Prior Year Expenditure	31,799.15			
6992 Energy Efficiency Revenues and Incentives	4,488.12			
6999 Other Revenues Not Specified Above	71,434.00			
TOTAL Revenue from Local Sources	\$5,688,944.62			\$4,948,243.10

	Revenue Reported In Current Year			
Revenue from State Sources				
7110 Basic Education Funding	6,874,019.94			
7160 Tuition for Orphans Subsidy	35,430.93			
7220 Vocational Education	41,647.00			
7271 Special Education funds for School-Aged Pupils	763,731.00			
7311 Pupil Transportation Subsidy	959,203.90			
7320 Rental and Sinking Fund Payments / Building Reimbursement Subsidy	261,852.00			
7330 Health Services (Medical, Dental, Nurse, Act 25)	21,407.03			
7340 State Property Tax Reduction Allocation	285,049.48			
7505 Ready to Learn Block Grant	238,273.00			
7509 Supplemental Equipment Grants	5,553.00			
7810 State Share of Social Security and Medicare Taxes	272,360.81			
7820 State Share of Retirement Contributions	1,271,178.00			
TOTAL Revenue from State Sources	\$11,029,706.09			

	Revenue Reported In Current Year			
<u>Revenue from Federal Sources</u>				
8514 NCLB, Title I - Improving the Academic Achievement of the Disadvantaged	443,318.00			
8515 NCLB, Title II - Preparing, Training and Recruiting High Quality Teachers and Principals	73,169.84			
8517 NCLB, Title IV - 21St Century Schools	9,999.94			
8820 Medical Assistance Reimbursement for Administrative Claiming (Quarterly) Program	1,150.37			
TOTAL Revenue from Federal Sources	\$527,638.15			
TOTAL FROM ALL SOURCES	\$17,246,288.86			\$4,948,243.10

Revenue from Local Sources	5,688,944.62
Revenue from State Sources	11,029,706.09
Revenue from Federal Sources	527,638.15
Other Financing Sources	
TOTAL FROM ALL SOURCES	\$17,246,288.86

LEA : 111317503 Southern Huntingdon County SD

Printed 3/8/2019 1:27:54 PM

General Fund (10)	
1000 Instruction	<u>Total</u>
100 <u>Personnel Services – Salaries</u>	
100 Personnel Services – Salaries	4,842,752.60
Total Personnel Services – Salaries	\$4,842,752.60
200 <u>Personnel Services – Employee Benefits</u>	
210 Group Insurance – Contracted Provider	942,953.28
220 Social Security Contributions	358,876.49
230 PSERS Retirement Contributions	1,530,372.55
299 All Other Employee Benefits	7,965.00
Total Personnel Services – Employee Benefits	\$2,840,167.32
300 <u>Purchased Professional and Technical Services</u>	
322 Professional Educational Services – Ius	136.00
324 Professional Educational Services – Employee Training and Development Services	599.00
329 Professional Educational Services – Other	14,204.85
330 Other Professional Services	159,294.56
340 Technical Services	350.00
Total Purchased Professional and Technical Services	\$174,584.41
400 <u>Purchased Property Services</u>	
430 Repairs and Maintenance Services	3,803.10
440 Rentals	38,700.00
Total Purchased Property Services	\$42,503.10
500 <u>Other Purchased Services</u>	
510 Student Transportation Services	290.76
530 Communications	36,096.00
550 Printing and Binding	2,828.14
561 Tuition To Other School Districts Within the State	371,906.21
562 Tuition To Pennsylvania Charter Schools	505,241.18
564 Tuition To Career and Technology Centers	553,401.96
567 Tuition To Approved Private Schools (APS) and PA Chartered Schools for the Deaf and Blind	95,916.77
568 Tuition To Private Residential Rehabilitative Institutions (PRRI) [In-State] and Detention Centers	11,332.42
569 Tuition – Other	23,019.94
580 Travel	6,274.78
Total Other Purchased Services	\$1,606,308.16
600 <u>Supplies</u>	
610 General Supplies	136,083.18
640 Books and Periodicals	24,420.97
650 Supplies & Fees – Technology Related	620.00
Total Supplies	\$161,124.15
700 <u>Property</u>	
752 Capital Equipment – Original and Additional	44,789.78
766 Capitalized Technology Hardware and Equipment– Replacement	1,002.50
Total Property	\$45,792.28

LEA : 111317503 Southern Huntingdon County SD

Printed 3/8/2019 1:27:54 PM

General Fund (10)		
1000 Instruction		<u>Total</u>
800 <u>Other Objects</u>		
810 Dues and Fees		5,819.46
Total Other Objects		\$5,819.46
Total 1000 Instruction		\$9,719,051.48

LEA : 111317503 Southern Huntingdon County SD

Printed 3/8/2019 1:27:54 PM

General Fund (10)				
1100 Regular Programs – Elementary / Secondary	<u>Elementary</u>	<u>Secondary</u>	<u>Federal</u>	<u>Total</u>
100 <u>Personnel Services – Salaries</u>				
100 Personnel Services – Salaries	1,349,567.34	2,009,089.86	272,708.50	3,631,365.70
Total Personnel Services – Salaries	\$1,349,567.34	\$2,009,089.86	\$272,708.50	\$3,631,365.70
200 <u>Personnel Services – Employee Benefits</u>				
210 Group Insurance – Contracted Provider	323,433.14	414,465.56	43,246.45	781,145.15
220 Social Security Contributions	103,883.74	145,050.94	19,768.58	268,703.26
230 PSERS Retirement Contributions	435,510.80	620,692.82	85,579.67	1,141,783.29
299 All Other Employee Benefits		7,965.00		7,965.00
Total Personnel Services – Employee Benefits	\$862,827.68	\$1,188,174.32	\$148,594.70	\$2,199,596.70
300 <u>Purchased Professional and Technical Services</u>				
329 Professional Educational Services – Other			8,928.00	8,928.00
330 Other Professional Services	2,601.50	20,252.84	73,837.59	96,691.93
Total Purchased Professional and Technical Services	\$2,601.50	\$20,252.84	\$82,765.59	\$105,619.93
400 <u>Purchased Property Services</u>				
430 Repairs and Maintenance Services		3,803.10		3,803.10
440 Rentals	15,480.00	23,220.00		38,700.00
Total Purchased Property Services	\$15,480.00	\$27,023.10		\$42,503.10
500 <u>Other Purchased Services</u>				
510 Student Transportation Services		290.76		290.76
530 Communications		36,096.00		36,096.00
561 Tuition To Other School Districts Within the State	8,394.71	9,672.00		18,066.71
562 Tuition To Pennsylvania Charter Schools	42,729.15	216,137.47		258,866.62
568 Tuition To Private Residential Rehabilitative Institutions (PRRI) [In-State] and Detention Centers	4,256.87			4,256.87
569 Tuition – Other		6,394.08		6,394.08
580 Travel	453.10	291.84	1,588.41	2,333.35
Total Other Purchased Services	\$55,833.83	\$268,882.15	\$1,588.41	\$326,304.39
600 <u>Supplies</u>				
610 General Supplies	10,712.27	101,828.30	3,544.15	116,084.72
640 Books and Periodicals	10,583.78	698.96		11,282.74
650 Supplies & Fees – Technology Related		620.00		620.00
Total Supplies	\$21,296.05	\$103,147.26	\$3,544.15	\$127,987.46
700 <u>Property</u>				
752 Capital Equipment – Original and Additional	489.16	348.62	1,797.00	2,634.78
766 Capitalized Technology Hardware and Equipment– Replacement		1,002.50		1,002.50
Total Property	\$489.16	\$1,351.12	\$1,797.00	\$3,637.28
800 <u>Other Objects</u>				
810 Dues and Fees	288.00	3,622.46		3,910.46
Total Other Objects	\$288.00	\$3,622.46		\$3,910.46
Total 1100 Regular Programs – Elementary / Secondary	\$2,308,383.56	\$3,621,543.11	\$510,998.35	\$6,440,925.02

LEA : 111317503 Southern Huntingdon County SD

Printed 3/8/2019 1:27:54 PM

General Fund (10)

1110 Regular Programs

	Elementary	Secondary	Federal	Total
100 <u>Personnel Services – Salaries</u>				
100 Personnel Services – Salaries	1,349,567.34	2,009,089.86		3,358,657.20
Total Personnel Services – Salaries	\$1,349,567.34	\$2,009,089.86		\$3,358,657.20
200 <u>Personnel Services – Employee Benefits</u>				
210 Group Insurance – Contracted Provider	323,433.14	414,465.56		737,898.70
220 Social Security Contributions	103,883.74	145,050.94		248,934.68
230 PSERS Retirement Contributions	435,510.80	620,692.82		1,056,203.62
299 All Other Employee Benefits		7,965.00		7,965.00
Total Personnel Services – Employee Benefits	\$862,827.68	\$1,188,174.32		\$2,051,002.00
300 <u>Purchased Professional and Technical Services</u>				
330 Other Professional Services	2,601.50	20,252.84	73,837.59	96,691.93
Total Purchased Professional and Technical Services	\$2,601.50	\$20,252.84	\$73,837.59	\$96,691.93
400 <u>Purchased Property Services</u>				
430 Repairs and Maintenance Services		3,803.10		3,803.10
440 Rentals	15,480.00	23,220.00		38,700.00
Total Purchased Property Services	\$15,480.00	\$27,023.10		\$42,503.10
500 <u>Other Purchased Services</u>				
510 Student Transportation Services		290.76		290.76
530 Communications		36,096.00		36,096.00
561 Tuition To Other School Districts Within the State	8,394.71	9,672.00		18,066.71
562 Tuition To Pennsylvania Charter Schools	42,729.15	216,137.47		258,866.62
568 Tuition To Private Residential Rehabilitative Institutions (PRRI) [In-State] and Detention Centers	4,256.87			4,256.87
569 Tuition – Other		6,394.08		6,394.08
580 Travel	453.10	291.84		744.94
Total Other Purchased Services	\$55,833.83	\$268,882.15		\$324,715.98
600 <u>Supplies</u>				
610 General Supplies	10,712.27	101,828.30		112,540.57
640 Books and Periodicals	10,583.78	698.96		11,282.74
650 Supplies & Fees – Technology Related		620.00		620.00
Total Supplies	\$21,296.05	\$103,147.26		\$124,443.31
700 <u>Property</u>				
752 Capital Equipment – Original and Additional	489.16	348.62	1,797.00	2,634.78
766 Capitalized Technology Hardware and Equipment– Replacement		1,002.50		1,002.50
Total Property	\$489.16	\$1,351.12	\$1,797.00	\$3,637.28
800 <u>Other Objects</u>				
810 Dues and Fees	288.00	3,622.46		3,910.46
Total Other Objects	\$288.00	\$3,622.46		\$3,910.46
Total 1110 Regular Programs	\$2,308,383.56	\$3,621,543.11	\$75,634.59	\$6,005,561.26

LEA : 111317503 Southern Huntingdon County SD

Printed 3/8/2019 1:27:54 PM

General Fund (10)				
1190 Federally-Funded Regular Programs	<u>Elementary</u>	<u>Secondary</u>	<u>Federal</u>	<u>Total</u>
100 <u>Personnel Services – Salaries</u>				
100 Personnel Services – Salaries			272,708.50	272,708.50
Total Personnel Services – Salaries			\$272,708.50	\$272,708.50
200 <u>Personnel Services – Employee Benefits</u>				
210 Group Insurance – Contracted Provider			43,246.45	43,246.45
220 Social Security Contributions			19,768.58	19,768.58
230 PSERS Retirement Contributions			85,579.67	85,579.67
Total Personnel Services – Employee Benefits			\$148,594.70	\$148,594.70
300 <u>Purchased Professional and Technical Services</u>				
329 Professional Educational Services – Other			8,928.00	8,928.00
Total Purchased Professional and Technical Services			\$8,928.00	\$8,928.00
500 <u>Other Purchased Services</u>				
580 Travel			1,588.41	1,588.41
Total Other Purchased Services			\$1,588.41	\$1,588.41
600 <u>Supplies</u>				
610 General Supplies			3,544.15	3,544.15
Total Supplies			\$3,544.15	\$3,544.15
Total 1190 Federally-Funded Regular Programs			\$435,363.76	\$435,363.76

LEA : 111317503 Southern Huntingdon County SD

Printed 3/8/2019 1:27:54 PM

General Fund (10)

1200 Special Programs – Elementary / Secondary	Elementary	Secondary	Federal	Total
100 Personnel Services – Salaries				
100 Personnel Services – Salaries	445,775.34	388,044.89	86,877.12	920,697.35
Total Personnel Services – Salaries	\$445,775.34	\$388,044.89	\$86,877.12	\$920,697.35
200 Personnel Services – Employee Benefits				
210 Group Insurance – Contracted Provider	58,531.00	56,720.84	303.52	115,555.36
220 Social Security Contributions	33,523.44	28,489.21	6,597.00	68,609.65
230 PSERS Retirement Contributions	144,404.48	124,229.66	28,086.35	296,720.49
Total Personnel Services – Employee Benefits	\$236,458.92	\$209,439.71	\$34,986.87	\$480,885.50
300 Purchased Professional and Technical Services				
322 Professional Educational Services – Ius	102.00	34.00		136.00
324 Professional Educational Services – Employee Training and Development Services		599.00		599.00
329 Professional Educational Services – Other			5,276.85	5,276.85
330 Other Professional Services	37,750.50	15,767.13		53,517.63
340 Technical Services	1.75	348.25		350.00
Total Purchased Professional and Technical Services	\$37,854.25	\$16,748.38	\$5,276.85	\$59,879.48
500 Other Purchased Services				
550 Printing and Binding	14.14	2,814.00		2,828.14
561 Tuition To Other School Districts Within the State	30,476.10	172,069.75	151,293.65	353,839.50
562 Tuition To Pennsylvania Charter Schools	2,177.82	244,196.74		246,374.56
567 Tuition To Approved Private Schools (APS) and PA Chartered Schools for the Deaf and Blind	45,312.77	50,604.00		95,916.77
568 Tuition To Private Residential Rehabilitative Institutions (PRRI) [In-State] and Detention Centers		7,075.55		7,075.55
569 Tuition – Other	16,625.86			16,625.86
580 Travel	1,032.36	2,081.67		3,114.03
Total Other Purchased Services	\$95,639.05	\$478,841.71	\$151,293.65	\$725,774.41
600 Supplies				
610 General Supplies	889.71	6,793.03	835.99	8,518.73
640 Books and Periodicals	2,328.45	7,574.66		9,903.11
Total Supplies	\$3,218.16	\$14,367.69	\$835.99	\$18,421.84
800 Other Objects				
810 Dues and Fees	1.30	257.70		259.00
Total Other Objects	\$1.30	\$257.70		\$259.00
Total 1200 Special Programs – Elementary / Secondary	\$818,947.02	\$1,107,700.08	\$279,270.48	\$2,205,917.58

LEA : 111317503 Southern Huntingdon County SD

Printed 3/8/2019 1:27:54 PM

General Fund (10)				
1210 Life Skills Support				
	<u>Elementary</u>	<u>Secondary</u>	<u>Federal</u>	<u>Total</u>
100 <u>Personnel Services – Salaries</u>				
100 Personnel Services – Salaries	43,085.78	43,387.96		86,473.74
Total Personnel Services – Salaries	\$43,085.78	\$43,387.96		\$86,473.74
200 <u>Personnel Services – Employee Benefits</u>				
210 Group Insurance – Contracted Provider	197.47	7,405.27		7,602.74
220 Social Security Contributions	3,226.42	3,125.17		6,351.59
230 PSERS Retirement Contributions	13,737.90	13,583.22		27,321.12
Total Personnel Services – Employee Benefits	\$17,161.79	\$24,113.66		\$41,275.45
Total 1210 Life Skills Support	\$60,247.57	\$67,501.62		\$127,749.19

LEA : 111317503 Southern Huntingdon County SD

Printed 3/8/2019 1:27:54 PM

General Fund (10)				
1220 Sensory Support	<u>Elementary</u>	<u>Secondary</u>	<u>Federal</u>	<u>Total</u>
100 <u>Personnel Services – Salaries</u>				
100 Personnel Services – Salaries	46,511.21	15,730.79		62,242.00
Total Personnel Services – Salaries	\$46,511.21	\$15,730.79		\$62,242.00
200 <u>Personnel Services – Employee Benefits</u>				
210 Group Insurance – Contracted Provider		79.20		79.20
220 Social Security Contributions	3,558.27	1,203.34		4,761.61
230 PSERS Retirement Contributions	15,148.83	5,123.58		20,272.41
Total Personnel Services – Employee Benefits	\$18,707.10	\$6,406.12		\$25,113.22
300 <u>Purchased Professional and Technical Services</u>				
322 Professional Educational Services – Ius	17.00			17.00
Total Purchased Professional and Technical Services	\$17.00			\$17.00
Total 1220 Sensory Support	\$65,235.31	\$22,136.91		\$87,372.22

LEA : 111317503 Southern Huntingdon County SD

Printed 3/8/2019 1:27:54 PM

General Fund (10)

1230 Emotional Support

	<u>Elementary</u>	<u>Secondary</u>	<u>Federal</u>	<u>Total</u>
100 <u>Personnel Services – Salaries</u>				
100 Personnel Services – Salaries	39,812.92	43,520.40		83,333.32
Total Personnel Services – Salaries	\$39,812.92	\$43,520.40		\$83,333.32
200 <u>Personnel Services – Employee Benefits</u>				
210 Group Insurance – Contracted Provider	5,451.07	16,200.90		21,651.97
220 Social Security Contributions	3,004.13	3,141.18		6,145.31
230 PSERS Retirement Contributions	12,967.16	14,170.70		27,137.86
Total Personnel Services – Employee Benefits	\$21,422.36	\$33,512.78		\$54,935.14
Total 1230 Emotional Support	\$61,235.28	\$77,033.18		\$138,268.46

LEA : 111317503 Southern Huntingdon County SD

Printed 3/8/2019 1:27:54 PM

General Fund (10)

1240 Academic Support

	Elementary	Secondary	Federal	Total
100 <u>Personnel Services – Salaries</u>				
100 Personnel Services – Salaries	315,726.23	282,567.61	86,877.12	685,170.96
Total Personnel Services – Salaries	\$315,726.23	\$282,567.61	\$86,877.12	\$685,170.96
200 <u>Personnel Services – Employee Benefits</u>				
210 Group Insurance – Contracted Provider	52,882.46	33,035.47	303.52	86,221.45
220 Social Security Contributions	23,687.21	20,945.83	6,597.00	51,230.04
230 PSERS Retirement Contributions	102,345.46	91,023.85	28,086.35	221,455.66
Total Personnel Services – Employee Benefits	\$178,915.13	\$145,005.15	\$34,986.87	\$358,907.15
300 <u>Purchased Professional and Technical Services</u>				
322 Professional Educational Services – Ius	85.00	34.00		119.00
324 Professional Educational Services – Employee Training and Development Services		599.00		599.00
329 Professional Educational Services – Other			5,276.85	5,276.85
330 Other Professional Services	37,750.50	15,767.13		53,517.63
Total Purchased Professional and Technical Services	\$37,835.50	\$16,400.13	\$5,276.85	\$59,512.48
500 <u>Other Purchased Services</u>				
561 Tuition To Other School Districts Within the State	30,476.10	172,069.75	151,293.65	353,839.50
562 Tuition To Pennsylvania Charter Schools	2,177.82	244,196.74		246,374.56
567 Tuition To Approved Private Schools (APS) and PA Chartered Schools for the Deaf and Blind	45,312.77			45,312.77
568 Tuition To Private Residential Rehabilitative Institutions (PRRI) [In-State] and Detention Centers		7,075.55		7,075.55
569 Tuition – Other	16,625.86			16,625.86
580 Travel	1,026.14	843.17		1,869.31
Total Other Purchased Services	\$95,618.69	\$424,185.21	\$151,293.65	\$671,097.55
600 <u>Supplies</u>				
610 General Supplies	874.70	3,805.95	835.99	5,516.64
640 Books and Periodicals	2,324.77	6,842.62		9,167.39
Total Supplies	\$3,199.47	\$10,648.57	\$835.99	\$14,684.03
800 <u>Other Objects</u>				
810 Dues and Fees	1.30	257.70		259.00
Total Other Objects	\$1.30	\$257.70		\$259.00
Total 1240 Academic Support	\$631,296.32	\$879,064.37	\$279,270.48	\$1,789,631.17

LEA : 111317503 Southern Huntingdon County SD

Printed 3/8/2019 1:27:54 PM

General Fund (10)

1241 Learning Support – Public	Elementary	Secondary	Federal	Total
100 <u>Personnel Services – Salaries</u>				
100 Personnel Services – Salaries	315,726.23	278,360.40	86,877.12	680,963.75
Total Personnel Services – Salaries	\$315,726.23	\$278,360.40	\$86,877.12	\$680,963.75
200 <u>Personnel Services – Employee Benefits</u>				
210 Group Insurance – Contracted Provider	52,252.10	33,033.95	303.52	85,589.57
220 Social Security Contributions	23,686.60	20,624.04	6,597.00	50,907.64
230 PSERS Retirement Contributions	102,345.47	89,653.59	28,086.35	220,085.41
Total Personnel Services – Employee Benefits	\$178,284.17	\$143,311.58	\$34,986.87	\$356,582.62
300 <u>Purchased Professional and Technical Services</u>				
322 Professional Educational Services – lus	85.00	34.00		119.00
324 Professional Educational Services – Employee Training and Development Services		599.00		599.00
329 Professional Educational Services – Other			5,276.85	5,276.85
330 Other Professional Services	37,750.50	15,767.13		53,517.63
Total Purchased Professional and Technical Services	\$37,835.50	\$16,400.13	\$5,276.85	\$59,512.48
500 <u>Other Purchased Services</u>				
561 Tuition To Other School Districts Within the State	30,476.10	172,069.75	151,293.65	353,839.50
562 Tuition To Pennsylvania Charter Schools	2,177.82	244,196.74		246,374.56
567 Tuition To Approved Private Schools (APS) and PA Chartered Schools for the Deaf and Blind	45,312.77			45,312.77
568 Tuition To Private Residential Rehabilitative Institutions (PRRI) [In-State] and Detention Centers		7,075.55		7,075.55
569 Tuition – Other	16,625.86			16,625.86
580 Travel	1,026.14	843.17		1,869.31
Total Other Purchased Services	\$95,618.69	\$424,185.21	\$151,293.65	\$671,097.55
600 <u>Supplies</u>				
610 General Supplies	874.70	3,805.95	835.99	5,516.64
640 Books and Periodicals	2,324.77	6,842.62		9,167.39
Total Supplies	\$3,199.47	\$10,648.57	\$835.99	\$14,684.03
800 <u>Other Objects</u>				
810 Dues and Fees	1.30	257.70		259.00
Total Other Objects	\$1.30	\$257.70		\$259.00
Total 1241 Learning Support – Public	\$630,665.36	\$873,163.59	\$279,270.48	\$1,783,099.43

LEA : 111317503 Southern Huntingdon County SD

Printed 3/8/2019 1:27:54 PM

General Fund (10)

1243 Gifted Support

	<u>Elementary</u>	<u>Secondary</u>	<u>Federal</u>	<u>Total</u>
100 <u>Personnel Services – Salaries</u>				
100 Personnel Services – Salaries		4,207.21		4,207.21
Total Personnel Services – Salaries		\$4,207.21		\$4,207.21
200 <u>Personnel Services – Employee Benefits</u>				
210 Group Insurance – Contracted Provider	630.36	1.52		631.88
220 Social Security Contributions	0.61	321.79		322.40
230 PSERS Retirement Contributions	(0.01)	1,370.26		1,370.25
Total Personnel Services – Employee Benefits	\$630.96	\$1,693.57		\$2,324.53
Total 1243 Gifted Support	\$630.96	\$5,900.78		\$6,531.74

LEA : 111317503 Southern Huntingdon County SD

Printed 3/8/2019 1:27:54 PM

General Fund (10)				
1290 Special Programs - Other Support	<u>Elementary</u>	<u>Secondary</u>	<u>Federal</u>	<u>Total</u>
100 <u>Personnel Services – Salaries</u>				
100 Personnel Services – Salaries	639.20	2,838.13		3,477.33
Total Personnel Services – Salaries	\$639.20	\$2,838.13		\$3,477.33
200 <u>Personnel Services – Employee Benefits</u>				
220 Social Security Contributions	47.41	73.69		121.10
230 PSERS Retirement Contributions	205.13	328.31		533.44
Total Personnel Services – Employee Benefits	\$252.54	\$402.00		\$654.54
300 <u>Purchased Professional and Technical Services</u>				
340 Technical Services	1.75	348.25		350.00
Total Purchased Professional and Technical Services	\$1.75	\$348.25		\$350.00
500 <u>Other Purchased Services</u>				
550 Printing and Binding	14.14	2,814.00		2,828.14
567 Tuition To Approved Private Schools (APS) and PA Chartered Schools for the Deaf and Blind		50,604.00		50,604.00
580 Travel	6.22	1,238.50		1,244.72
Total Other Purchased Services	\$20.36	\$54,656.50		\$54,676.86
600 <u>Supplies</u>				
610 General Supplies	15.01	2,987.08		3,002.09
640 Books and Periodicals	3.68	732.04		735.72
Total Supplies	\$18.69	\$3,719.12		\$3,737.81
Total 1290 Special Programs - Other Support	\$932.54	\$61,964.00		\$62,896.54

LEA : 111317503 Southern Huntingdon County SD

Printed 3/8/2019 1:27:54 PM

General Fund (10)				
1300 Vocational Education				
	<u>Elementary</u>	<u>Secondary</u>	<u>Federal</u>	<u>Total</u>
100 <u>Personnel Services – Salaries</u>				
100 Personnel Services – Salaries		146,088.42		146,088.42
Total Personnel Services – Salaries		\$146,088.42		\$146,088.42
200 <u>Personnel Services – Employee Benefits</u>				
210 Group Insurance – Contracted Provider		40,135.56		40,135.56
220 Social Security Contributions		10,674.61		10,674.61
230 PSERS Retirement Contributions		47,175.48		47,175.48
Total Personnel Services – Employee Benefits		\$97,985.65		\$97,985.65
500 <u>Other Purchased Services</u>				
564 Tuition To Career and Technology Centers		553,401.96		553,401.96
580 Travel		30.97		30.97
Total Other Purchased Services		\$553,432.93		\$553,432.93
600 <u>Supplies</u>				
610 General Supplies		6,328.17		6,328.17
640 Books and Periodicals		3,235.12		3,235.12
Total Supplies		\$9,563.29		\$9,563.29
700 <u>Property</u>				
752 Capital Equipment – Original and Additional		42,155.00		42,155.00
Total Property		\$42,155.00		\$42,155.00
800 <u>Other Objects</u>				
810 Dues and Fees		1,250.00		1,250.00
Total Other Objects		\$1,250.00		\$1,250.00
Total 1300 Vocational Education		\$850,475.29		\$850,475.29

LEA : 111317503 Southern Huntingdon County SD

Printed 3/8/2019 1:27:54 PM

General Fund (10)				
1400 Other Instructional Programs – Elementary / Secondary	<u>Elementary</u>	<u>Secondary</u>	<u>Federal</u>	<u>Total</u>
100 <u>Personnel Services – Salaries</u>				
100 Personnel Services – Salaries	2,812.32	77,702.89	64,085.92	144,601.13
Total Personnel Services – Salaries	\$2,812.32	\$77,702.89	\$64,085.92	\$144,601.13
200 <u>Personnel Services – Employee Benefits</u>				
210 Group Insurance – Contracted Provider	30.59	6,086.62		6,117.21
220 Social Security Contributions	214.80	5,871.33	4,802.84	10,888.97
230 PSERS Retirement Contributions	679.52	25,046.39	18,967.38	44,693.29
Total Personnel Services – Employee Benefits	\$924.91	\$37,004.34	\$23,770.22	\$61,699.47
300 <u>Purchased Professional and Technical Services</u>				
330 Other Professional Services		9,085.00		9,085.00
Total Purchased Professional and Technical Services		\$9,085.00		\$9,085.00
500 <u>Other Purchased Services</u>				
580 Travel	343.52	307.42	145.49	796.43
Total Other Purchased Services	\$343.52	\$307.42	\$145.49	\$796.43
600 <u>Supplies</u>				
610 General Supplies		80.90	5,070.66	5,151.56
Total Supplies		\$80.90	\$5,070.66	\$5,151.56
800 <u>Other Objects</u>				
810 Dues and Fees	2.00	398.00		400.00
Total Other Objects	\$2.00	\$398.00		\$400.00
Total 1400 Other Instructional Programs – Elementary / Secondary	\$4,082.75	\$124,578.55	\$93,072.29	\$221,733.59

LEA : 111317503 Southern Huntingdon County SD

Printed 3/8/2019 1:27:54 PM

General Fund (10)

1430 Homebound Instruction	<u>Elementary</u>	<u>Secondary</u>	<u>Federal</u>	<u>Total</u>
100 <u>Personnel Services – Salaries</u>				
100 Personnel Services – Salaries	2,436.50	2,915.00		5,351.50
Total Personnel Services – Salaries	\$2,436.50	\$2,915.00		\$5,351.50
200 <u>Personnel Services – Employee Benefits</u>				
220 Social Security Contributions	186.41	221.99		408.40
230 PSERS Retirement Contributions	557.12	687.87		1,244.99
Total Personnel Services – Employee Benefits	\$743.53	\$909.86		\$1,653.39
500 <u>Other Purchased Services</u>				
580 Travel	343.52	307.42		650.94
Total Other Purchased Services	\$343.52	\$307.42		\$650.94
Total 1430 Homebound Instruction	\$3,523.55	\$4,132.28		\$7,655.83

LEA : 111317503 Southern Huntingdon County SD

Printed 3/8/2019 1:27:54 PM

General Fund (10)				
1440 Alternative Regular Education Programs	<u>Elementary</u>	<u>Secondary</u>	<u>Federal</u>	<u>Total</u>
100 <u>Personnel Services – Salaries</u>				
100 Personnel Services – Salaries	375.82	74,787.89		75,163.71
Total Personnel Services – Salaries	\$375.82	\$74,787.89		\$75,163.71
200 <u>Personnel Services – Employee Benefits</u>				
210 Group Insurance – Contracted Provider	30.59	6,086.62		6,117.21
220 Social Security Contributions	28.39	5,649.34		5,677.73
230 PSERS Retirement Contributions	122.40	24,358.52		24,480.92
Total Personnel Services – Employee Benefits	\$181.38	\$36,094.48		\$36,275.86
300 <u>Purchased Professional and Technical Services</u>				
330 Other Professional Services		9,085.00		9,085.00
Total Purchased Professional and Technical Services		\$9,085.00		\$9,085.00
600 <u>Supplies</u>				
610 General Supplies		80.90		80.90
Total Supplies		\$80.90		\$80.90
800 <u>Other Objects</u>				
810 Dues and Fees	2.00	398.00		400.00
Total Other Objects	\$2.00	\$398.00		\$400.00
Total 1440 Alternative Regular Education Programs	\$559.20	\$120,446.27		\$121,005.47

LEA : 111317503 Southern Huntingdon County SD

Printed 3/8/2019 1:27:54 PM

General Fund (10)				
1442 Alternative Education Programs	<u>Elementary</u>	<u>Secondary</u>	<u>Federal</u>	<u>Total</u>
100 <u>Personnel Services – Salaries</u>				
100 Personnel Services – Salaries	375.82	74,787.89		75,163.71
Total Personnel Services – Salaries	\$375.82	\$74,787.89		\$75,163.71
200 <u>Personnel Services – Employee Benefits</u>				
210 Group Insurance – Contracted Provider	30.59	6,086.62		6,117.21
220 Social Security Contributions	28.39	5,649.34		5,677.73
230 PSERS Retirement Contributions	122.40	24,358.52		24,480.92
Total Personnel Services – Employee Benefits	\$181.38	\$36,094.48		\$36,275.86
300 <u>Purchased Professional and Technical Services</u>				
330 Other Professional Services		9,085.00		9,085.00
Total Purchased Professional and Technical Services		\$9,085.00		\$9,085.00
600 <u>Supplies</u>				
610 General Supplies		80.90		80.90
Total Supplies		\$80.90		\$80.90
800 <u>Other Objects</u>				
810 Dues and Fees	2.00	398.00		400.00
Total Other Objects	\$2.00	\$398.00		\$400.00
Total 1442 Alternative Education Programs	\$559.20	\$120,446.27		\$121,005.47

LEA : 111317503 Southern Huntingdon County SD

Printed 3/8/2019 1:27:54 PM

General Fund (10)				
1450 Instructional Programs Outside the Established School Day	<u>Elementary</u>	<u>Secondary</u>	<u>Federal</u>	<u>Total</u>
100 <u>Personnel Services – Salaries</u>				
100 Personnel Services – Salaries			64,085.92	64,085.92
Total Personnel Services – Salaries			\$64,085.92	\$64,085.92
200 <u>Personnel Services – Employee Benefits</u>				
220 Social Security Contributions			4,802.84	4,802.84
230 PSERS Retirement Contributions			18,967.38	18,967.38
Total Personnel Services – Employee Benefits			\$23,770.22	\$23,770.22
500 <u>Other Purchased Services</u>				
580 Travel			145.49	145.49
Total Other Purchased Services			\$145.49	\$145.49
600 <u>Supplies</u>				
610 General Supplies			5,070.66	5,070.66
Total Supplies			\$5,070.66	\$5,070.66
Total 1450 Instructional Programs Outside the Established School Day			\$93,072.29	\$93,072.29

LEA : 111317503 Southern Huntingdon County SD

Printed 3/8/2019 1:27:57 PM

General Fund (10)	
2000 Support Services	<u>Total</u>
100 <u>Personnel Services – Salaries</u>	
100 Personnel Services – Salaries	1,555,718.66
Total Personnel Services – Salaries	\$1,555,718.66
200 <u>Personnel Services – Employee Benefits</u>	
210 Group Insurance – Contracted Provider	407,811.34
220 Social Security Contributions	115,792.58
230 PSERS Retirement Contributions	467,570.08
240 Tuition Reimbursement	20,901.50
250 Unemployment Compensation	3,453.63
Total Personnel Services – Employee Benefits	\$1,015,529.13
300 <u>Purchased Professional and Technical Services</u>	
322 Professional Educational Services – Ius	207,647.18
329 Professional Educational Services – Other	(46.00)
330 Other Professional Services	109,595.33
340 Technical Services	47,420.41
390 Other Purchased Professional and Technical Services	8,594.05
Total Purchased Professional and Technical Services	\$373,210.97
400 <u>Purchased Property Services</u>	
410 Cleaning Services	21,947.69
420 Utility Services	217,712.52
430 Repairs and Maintenance Services	290,487.49
440 Rentals	2,630.00
Total Purchased Property Services	\$532,777.70
500 <u>Other Purchased Services</u>	
511 Student Transportation Services from Another LEA Within the State	2,750.00
513 Contracted Carriers	1,241,451.79
516 Student Transportation Services From the IU	2,593.35
520 Insurance – General	2,425.00
522 Automotive Liability Insurance	8,047.00
523 General Property and Liability Insurance	58,814.00
529 Other Insurance	117,401.75
530 Communications	32,582.58
549 Other Advertising/Public Relations	3,900.37
550 Printing and Binding	3,951.20
580 Travel	12,141.83
Total Other Purchased Services	\$1,486,058.87
600 <u>Supplies</u>	
610 General Supplies	98,727.16
620 Energy	168,018.84
640 Books and Periodicals	5,993.47
Total Supplies	\$272,739.47
700 <u>Property</u>	
752 Capital Equipment – Original and Additional	91,801.83

General Fund (10)

2000 Support Services

Total

700 <u>Property</u>	
762 Capitalized Equipment - Replacement	79,177.95
Total Property	\$170,979.78
800 <u>Other Objects</u>	
810 Dues and Fees	17,122.04
Total Other Objects	\$17,122.04
Total 2000 Support Services	\$5,424,136.62

LEA : 111317503 Southern Huntingdon County SD

Printed 3/8/2019 1:27:57 PM

General Fund (10)				
2100 Support Services – Students	<u>Elementary</u>	<u>Secondary</u>	<u>Federal</u>	<u>Total</u>
100 <u>Personnel Services – Salaries</u>				
100 Personnel Services – Salaries	39,913.54	183,682.02		223,595.56
Total Personnel Services – Salaries	\$39,913.54	\$183,682.02		\$223,595.56
200 <u>Personnel Services – Employee Benefits</u>				
210 Group Insurance – Contracted Provider	14,496.78	44,362.33		58,859.11
220 Social Security Contributions	2,928.10	13,679.45		16,607.55
230 PSERS Retirement Contributions	13,000.05	59,769.16		72,769.21
Total Personnel Services – Employee Benefits	\$30,424.93	\$117,810.94		\$148,235.87
500 <u>Other Purchased Services</u>				
580 Travel	84.93			84.93
Total Other Purchased Services	\$84.93			\$84.93
600 <u>Supplies</u>				
610 General Supplies	94.87	536.62		631.49
Total Supplies	\$94.87	\$536.62		\$631.49
800 <u>Other Objects</u>				
810 Dues and Fees	1.70	337.30		339.00
Total Other Objects	\$1.70	\$337.30		\$339.00
Total 2100 Support Services – Students	\$70,519.97	\$302,366.88		\$372,886.85

LEA : 111317503 Southern Huntingdon County SD

Printed 3/8/2019 1:27:57 PM

General Fund (10)				
2120 Guidance Services	<u>Elementary</u>	<u>Secondary</u>	<u>Federal</u>	<u>Total</u>
100 <u>Personnel Services – Salaries</u>				
100 Personnel Services – Salaries	39,592.54	119,803.02		159,395.56
Total Personnel Services – Salaries	\$39,592.54	\$119,803.02		\$159,395.56
200 <u>Personnel Services – Employee Benefits</u>				
210 Group Insurance – Contracted Provider	14,463.05	37,650.14		52,113.19
220 Social Security Contributions	2,903.71	8,826.52		11,730.23
230 PSERS Retirement Contributions	12,895.50	38,963.88		51,859.38
Total Personnel Services – Employee Benefits	\$30,262.26	\$85,440.54		\$115,702.80
500 <u>Other Purchased Services</u>				
580 Travel	84.93			84.93
Total Other Purchased Services	\$84.93			\$84.93
600 <u>Supplies</u>				
610 General Supplies	93.80	324.47		418.27
Total Supplies	\$93.80	\$324.47		\$418.27
Total 2120 Guidance Services	\$70,033.53	\$205,568.03		\$275,601.56

LEA : 111317503 Southern Huntingdon County SD

Printed 3/8/2019 1:27:57 PM

General Fund (10)				
2140 Psychological Services				
	<u>Elementary</u>	<u>Secondary</u>	<u>Federal</u>	<u>Total</u>
100 <u>Personnel Services – Salaries</u>				
100 Personnel Services – Salaries	321.00	63,879.00		64,200.00
Total Personnel Services – Salaries	\$321.00	\$63,879.00		\$64,200.00
200 <u>Personnel Services – Employee Benefits</u>				
210 Group Insurance – Contracted Provider	33.73	6,712.19		6,745.92
220 Social Security Contributions	24.39	4,852.93		4,877.32
230 PSERS Retirement Contributions	104.55	20,805.28		20,909.83
Total Personnel Services – Employee Benefits	\$162.67	\$32,370.40		\$32,533.07
600 <u>Supplies</u>				
610 General Supplies	1.07	212.15		213.22
Total Supplies	\$1.07	\$212.15		\$213.22
800 <u>Other Objects</u>				
810 Dues and Fees	1.70	337.30		339.00
Total Other Objects	\$1.70	\$337.30		\$339.00
Total 2140 Psychological Services	\$486.44	\$96,798.85		\$97,285.29

LEA : 111317503 Southern Huntingdon County SD

Printed 3/8/2019 1:27:57 PM

General Fund (10)

2200 Support Services – Instructional Staff	<u>Elementary</u>	<u>Secondary</u>	<u>Federal</u>	<u>Total</u>
100 <u>Personnel Services – Salaries</u>				
100 Personnel Services – Salaries	35,439.08	101,492.18	2,035.52	138,966.78
Total Personnel Services – Salaries	\$35,439.08	\$101,492.18	\$2,035.52	\$138,966.78
200 <u>Personnel Services – Employee Benefits</u>				
210 Group Insurance – Contracted Provider	11,604.29	10,860.91		22,465.20
220 Social Security Contributions	2,612.74	7,685.42	154.44	10,452.60
230 PSERS Retirement Contributions	11,542.52	33,008.97	662.97	45,214.46
240 Tuition Reimbursement	5,832.00	15,069.50		20,901.50
Total Personnel Services – Employee Benefits	\$31,591.55	\$66,624.80	\$817.41	\$99,033.76
300 <u>Purchased Professional and Technical Services</u>				
322 Professional Educational Services – Ius	1,038.23	206,608.95		207,647.18
329 Professional Educational Services – Other	(1.25)	(248.75)		(250.00)
330 Other Professional Services			8,333.04	8,333.04
340 Technical Services	236.85	47,133.56		47,370.41
390 Other Purchased Professional and Technical Services		8,594.05		8,594.05
Total Purchased Professional and Technical Services	\$1,273.83	\$262,087.81	\$8,333.04	\$271,694.68
400 <u>Purchased Property Services</u>				
430 Repairs and Maintenance Services	176.93	915.70		1,092.63
Total Purchased Property Services	\$176.93	\$915.70		\$1,092.63
500 <u>Other Purchased Services</u>				
530 Communications	2.52	502.25	219.04	723.81
580 Travel	6.63	1,318.53		1,325.16
Total Other Purchased Services	\$9.15	\$1,820.78	\$219.04	\$2,048.97
600 <u>Supplies</u>				
610 General Supplies	956.69	4,439.14		5,395.83
640 Books and Periodicals	1,668.65	3,973.14		5,641.79
Total Supplies	\$2,625.34	\$8,412.28		\$11,037.62
700 <u>Property</u>				
752 Capital Equipment – Original and Additional	34,248.15	49,400.07		83,648.22
762 Capitalized Equipment - Replacement		10,908.46		10,908.46
Total Property	\$34,248.15	\$60,308.53		\$94,556.68
800 <u>Other Objects</u>				
810 Dues and Fees	1.48	293.52		295.00
Total Other Objects	\$1.48	\$293.52		\$295.00
Total 2200 Support Services – Instructional Staff	\$105,365.51	\$501,955.60	\$11,405.01	\$618,726.12

LEA : 111317503 Southern Huntingdon County SD

Printed 3/8/2019 1:27:57 PM

General Fund (10)				
2240 Computer-Assisted Instruction Support Services	<u>Elementary</u>	<u>Secondary</u>	<u>Federal</u>	<u>Total</u>
100 <u>Personnel Services – Salaries</u>				
100 Personnel Services – Salaries	9.00	1,791.00		1,800.00
Total Personnel Services – Salaries	\$9.00	\$1,791.00		\$1,800.00
200 <u>Personnel Services – Employee Benefits</u>				
210 Group Insurance – Contracted Provider	(0.71)	(141.93)		(142.64)
220 Social Security Contributions	0.69	137.01		137.70
230 PSERS Retirement Contributions	2.93	583.33		586.26
Total Personnel Services – Employee Benefits	\$2.91	\$578.41		\$581.32
300 <u>Purchased Professional and Technical Services</u>				
322 Professional Educational Services – Ius	1,038.15	206,592.03		207,630.18
329 Professional Educational Services – Other	(1.25)	(248.75)		(250.00)
340 Technical Services	236.85	47,133.56		47,370.41
Total Purchased Professional and Technical Services	\$1,273.75	\$253,476.84		\$254,750.59
400 <u>Purchased Property Services</u>				
430 Repairs and Maintenance Services	176.93	915.70		1,092.63
Total Purchased Property Services	\$176.93	\$915.70		\$1,092.63
600 <u>Supplies</u>				
610 General Supplies	956.69	4,439.14		5,395.83
Total Supplies	\$956.69	\$4,439.14		\$5,395.83
700 <u>Property</u>				
752 Capital Equipment – Original and Additional	34,248.15	49,400.07		83,648.22
762 Capitalized Equipment - Replacement		10,908.46		10,908.46
Total Property	\$34,248.15	\$60,308.53		\$94,556.68
Total 2240 Computer-Assisted Instruction Support Services	\$36,667.43	\$321,509.62		\$358,177.05

LEA : 111317503 Southern Huntingdon County SD

Printed 3/8/2019 1:27:57 PM

General Fund (10)				
2250 School Library Services	<u>Elementary</u>	<u>Secondary</u>	<u>Federal</u>	<u>Total</u>
100 <u>Personnel Services – Salaries</u>				
100 Personnel Services – Salaries	35,056.58	25,374.68		60,431.26
Total Personnel Services – Salaries	\$35,056.58	\$25,374.68		\$60,431.26
200 <u>Personnel Services – Employee Benefits</u>				
210 Group Insurance – Contracted Provider	11,571.24	4,284.08		15,855.32
220 Social Security Contributions	2,583.71	1,908.22		4,491.93
230 PSERS Retirement Contributions	11,417.94	8,217.55		19,635.49
Total Personnel Services – Employee Benefits	\$25,572.89	\$14,409.85		\$39,982.74
300 <u>Purchased Professional and Technical Services</u>				
390 Other Purchased Professional and Technical Services		8,594.05		8,594.05
Total Purchased Professional and Technical Services		\$8,594.05		\$8,594.05
600 <u>Supplies</u>				
640 Books and Periodicals	1,668.65	3,973.14		5,641.79
Total Supplies	\$1,668.65	\$3,973.14		\$5,641.79
Total 2250 School Library Services	\$62,298.12	\$52,351.72		\$114,649.84

LEA : 111317503 Southern Huntingdon County SD

Printed 3/8/2019 1:27:57 PM

General Fund (10)				
2260 Instruction and Curriculum Development Services	<u>Elementary</u>	<u>Secondary</u>	<u>Federal</u>	<u>Total</u>
100 <u>Personnel Services – Salaries</u>				
100 Personnel Services – Salaries	373.50	74,326.50		74,700.00
Total Personnel Services – Salaries	\$373.50	\$74,326.50		\$74,700.00
200 <u>Personnel Services – Employee Benefits</u>				
210 Group Insurance – Contracted Provider	33.76	6,718.76		6,752.52
220 Social Security Contributions	28.34	5,640.19		5,668.53
230 PSERS Retirement Contributions	121.65	24,208.09		24,329.74
Total Personnel Services – Employee Benefits	\$183.75	\$36,567.04		\$36,750.79
300 <u>Purchased Professional and Technical Services</u>				
322 Professional Educational Services – Ius	0.08	16.92		17.00
Total Purchased Professional and Technical Services	\$0.08	\$16.92		\$17.00
500 <u>Other Purchased Services</u>				
530 Communications	2.52	502.25		504.77
580 Travel	6.63	1,318.53		1,325.16
Total Other Purchased Services	\$9.15	\$1,820.78		\$1,829.93
800 <u>Other Objects</u>				
810 Dues and Fees	1.48	293.52		295.00
Total Other Objects	\$1.48	\$293.52		\$295.00
Total 2260 Instruction and Curriculum Development Services	\$567.96	\$113,024.76		\$113,592.72

LEA : 111317503 Southern Huntingdon County SD

Printed 3/8/2019 1:27:57 PM

General Fund (10)				
2270 Instructional Staff Professional Development Services	<u>Elementary</u>	<u>Secondary</u>	<u>Federal</u>	<u>Total</u>
100 <u>Personnel Services – Salaries</u>				
100 Personnel Services – Salaries			2,035.52	2,035.52
Total Personnel Services – Salaries			\$2,035.52	\$2,035.52
200 <u>Personnel Services – Employee Benefits</u>				
220 Social Security Contributions			154.44	154.44
230 PSERS Retirement Contributions			662.97	662.97
240 Tuition Reimbursement	5,832.00	15,069.50		20,901.50
Total Personnel Services – Employee Benefits	\$5,832.00	\$15,069.50	\$817.41	\$21,718.91
300 <u>Purchased Professional and Technical Services</u>				
330 Other Professional Services			8,083.04	8,083.04
Total Purchased Professional and Technical Services			\$8,083.04	\$8,083.04
500 <u>Other Purchased Services</u>				
530 Communications			219.04	219.04
Total Other Purchased Services			\$219.04	\$219.04
Total 2270 Instructional Staff Professional Development Services	\$5,832.00	\$15,069.50	\$11,155.01	\$32,056.51

LEA : 111317503 Southern Huntingdon County SD

Printed 3/8/2019 1:27:57 PM

General Fund (10)

2290 Other Instructional Staff Services	<u>Elementary</u>	<u>Secondary</u>	<u>Federal</u>	<u>Total</u>
300 <u>Purchased Professional and Technical Services</u>				
330 Other Professional Services			250.00	250.00
Total Purchased Professional and Technical Services			\$250.00	\$250.00
Total 2290 Other Instructional Staff Services			\$250.00	\$250.00

LEA : 111317503 Southern Huntingdon County SD

Printed 3/8/2019 1:27:57 PM

General Fund (10)				
2300 Support Services – Administration	<u>Elementary</u>	<u>Secondary</u>	<u>Federal</u>	<u>Total</u>
100 <u>Personnel Services – Salaries</u>				
100 Personnel Services – Salaries	190,839.19	163,821.60		580,986.22
Total Personnel Services – Salaries	\$190,839.19	\$163,821.60		\$580,986.22
200 <u>Personnel Services – Employee Benefits</u>				
210 Group Insurance – Contracted Provider	53,367.02	52,808.24		133,079.50
220 Social Security Contributions	14,046.02	12,102.53		43,277.59
230 PSERS Retirement Contributions	62,055.76	53,055.43		148,658.22
Total Personnel Services – Employee Benefits	\$129,468.80	\$117,966.20		\$325,015.31
300 <u>Purchased Professional and Technical Services</u>				
329 Professional Educational Services – Other				204.00
330 Other Professional Services	795.00			51,348.19
340 Technical Services				50.00
Total Purchased Professional and Technical Services	\$795.00			\$51,602.19
500 <u>Other Purchased Services</u>				
520 Insurance – General				2,425.00
530 Communications	1,169.75	11,986.42		13,156.17
549 Other Advertising/Public Relations				3,900.37
550 Printing and Binding				3,951.20
580 Travel	1,133.54	1,412.76		3,058.00
Total Other Purchased Services	\$2,303.29	\$13,399.18		\$26,490.74
600 <u>Supplies</u>				
610 General Supplies	2,183.23	1,494.32		9,194.45
640 Books and Periodicals		351.68		351.68
Total Supplies	\$2,183.23	\$1,846.00		\$9,546.13
700 <u>Property</u>				
752 Capital Equipment – Original and Additional				133.46
762 Capitalized Equipment - Replacement		299.99		299.99
Total Property		\$299.99		\$433.45
800 <u>Other Objects</u>				
810 Dues and Fees	295.00	600.00		10,739.46
Total Other Objects	\$295.00	\$600.00		\$10,739.46
Total 2300 Support Services – Administration	\$325,884.51	\$297,932.97		\$1,004,813.50

LEA : 111317503 Southern Huntingdon County SD

Printed 3/8/2019 1:27:57 PM

General Fund (10)				
2310 Board Services	<u>Elementary</u>	<u>Secondary</u>	<u>Federal</u>	<u>Total</u>
100 <u>Personnel Services – Salaries</u>				
100 Personnel Services – Salaries				15,306.97
Total Personnel Services – Salaries				\$15,306.97
200 <u>Personnel Services – Employee Benefits</u>				
220 Social Security Contributions				1,170.97
230 PSERS Retirement Contributions				4,985.57
Total Personnel Services – Employee Benefits				\$6,156.54
300 <u>Purchased Professional and Technical Services</u>				
330 Other Professional Services				39,604.72
Total Purchased Professional and Technical Services				\$39,604.72
500 <u>Other Purchased Services</u>				
549 Other Advertising/Public Relations				3,900.37
580 Travel				230.10
Total Other Purchased Services				\$4,130.47
600 <u>Supplies</u>				
610 General Supplies				631.52
Total Supplies				\$631.52
800 <u>Other Objects</u>				
810 Dues and Fees				8,140.46
Total Other Objects				\$8,140.46
Total 2310 Board Services				\$73,970.68

LEA : 111317503 Southern Huntingdon County SD

Printed 3/8/2019 1:27:57 PM

General Fund (10)				
2330 Tax Assessment and Collection Services	<u>Elementary</u>	<u>Secondary</u>	<u>Federal</u>	<u>Total</u>
100 <u>Personnel Services – Salaries</u>				
100 Personnel Services – Salaries				47,050.00
Total Personnel Services – Salaries				\$47,050.00
200 <u>Personnel Services – Employee Benefits</u>				
220 Social Security Contributions				3,599.35
Total Personnel Services – Employee Benefits				\$3,599.35
300 <u>Purchased Professional and Technical Services</u>				
330 Other Professional Services				10,948.47
Total Purchased Professional and Technical Services				\$10,948.47
500 <u>Other Purchased Services</u>				
520 Insurance – General				2,425.00
550 Printing and Binding				3,951.20
Total Other Purchased Services				\$6,376.20
600 <u>Supplies</u>				
610 General Supplies				3,807.54
Total Supplies				\$3,807.54
Total 2330 Tax Assessment and Collection Services				\$71,781.56

LEA : 111317503 Southern Huntingdon County SD

Printed 3/8/2019 1:27:57 PM

General Fund (10)				
2360 Office of the Superintendent / Executive Director Services	<u>Elementary</u>	<u>Secondary</u>	<u>Federal</u>	<u>Total</u>
100 <u>Personnel Services – Salaries</u>				
100 Personnel Services – Salaries				163,968.46
Total Personnel Services – Salaries				\$163,968.46
200 <u>Personnel Services – Employee Benefits</u>				
210 Group Insurance – Contracted Provider				26,904.24
220 Social Security Contributions				12,358.72
230 PSERS Retirement Contributions				28,561.46
Total Personnel Services – Employee Benefits				\$67,824.42
300 <u>Purchased Professional and Technical Services</u>				
329 Professional Educational Services – Other				204.00
340 Technical Services				50.00
Total Purchased Professional and Technical Services				\$254.00
500 <u>Other Purchased Services</u>				
530 Communications	5.74	1,143.01		1,148.75
580 Travel				281.60
Total Other Purchased Services	\$5.74	\$1,143.01		\$1,430.35
600 <u>Supplies</u>				
610 General Supplies				1,077.84
Total Supplies				\$1,077.84
700 <u>Property</u>				
752 Capital Equipment – Original and Additional				133.46
Total Property				\$133.46
800 <u>Other Objects</u>				
810 Dues and Fees				1,704.00
Total Other Objects				\$1,704.00
Total 2360 Office of the Superintendent / Executive Director Services	\$5.74	\$1,143.01		\$236,392.53

LEA : 111317503 Southern Huntingdon County SD

Printed 3/8/2019 1:27:57 PM

General Fund (10)				
2380 Office of the Principal Services	<u>Elementary</u>	<u>Secondary</u>	<u>Federal</u>	<u>Total</u>
100 <u>Personnel Services – Salaries</u>				
100 Personnel Services – Salaries	190,839.19	163,821.60		354,660.79
Total Personnel Services – Salaries	\$190,839.19	\$163,821.60		\$354,660.79
200 <u>Personnel Services – Employee Benefits</u>				
210 Group Insurance – Contracted Provider	53,367.02	52,808.24		106,175.26
220 Social Security Contributions	14,046.02	12,102.53		26,148.55
230 PSERS Retirement Contributions	62,055.76	53,055.43		115,111.19
Total Personnel Services – Employee Benefits	\$129,468.80	\$117,966.20		\$247,435.00
300 <u>Purchased Professional and Technical Services</u>				
330 Other Professional Services	795.00			795.00
Total Purchased Professional and Technical Services	\$795.00			\$795.00
500 <u>Other Purchased Services</u>				
530 Communications	1,164.01	10,843.41		12,007.42
580 Travel	1,133.54	1,412.76		2,546.30
Total Other Purchased Services	\$2,297.55	\$12,256.17		\$14,553.72
600 <u>Supplies</u>				
610 General Supplies	2,183.23	1,494.32		3,677.55
640 Books and Periodicals		351.68		351.68
Total Supplies	\$2,183.23	\$1,846.00		\$4,029.23
700 <u>Property</u>				
762 Capitalized Equipment - Replacement		299.99		299.99
Total Property		\$299.99		\$299.99
800 <u>Other Objects</u>				
810 Dues and Fees	295.00	600.00		895.00
Total Other Objects	\$295.00	\$600.00		\$895.00
Total 2380 Office of the Principal Services	\$325,878.77	\$296,789.96		\$622,668.73

LEA : 111317503 Southern Huntingdon County SD

Printed 3/8/2019 1:27:57 PM

General Fund (10)				
2400 Support Services – Pupil Health	<u>Elementary</u>	<u>Secondary</u>	<u>Federal</u>	<u>Total</u>
100 <u>Personnel Services – Salaries</u>				
100 Personnel Services – Salaries				116,957.64
Total Personnel Services – Salaries				\$116,957.64
200 <u>Personnel Services – Employee Benefits</u>				
210 Group Insurance – Contracted Provider				26,587.44
220 Social Security Contributions				8,726.36
230 PSERS Retirement Contributions				38,093.13
Total Personnel Services – Employee Benefits				\$73,406.93
300 <u>Purchased Professional and Technical Services</u>				
330 Other Professional Services				1,773.06
Total Purchased Professional and Technical Services				\$1,773.06
500 <u>Other Purchased Services</u>				
580 Travel				956.27
Total Other Purchased Services				\$956.27
600 <u>Supplies</u>				
610 General Supplies				2,550.65
Total Supplies				\$2,550.65
800 <u>Other Objects</u>				
810 Dues and Fees				130.00
Total Other Objects				\$130.00
Total 2400 Support Services – Pupil Health				\$195,774.55

LEA : 111317503 Southern Huntingdon County SD

Printed 3/8/2019 1:27:57 PM

General Fund (10)				
2440 Nursing Services	<u>Elementary</u>	<u>Secondary</u>	<u>Federal</u>	<u>Total</u>
100 <u>Personnel Services – Salaries</u>				
100 Personnel Services – Salaries				116,957.64
Total Personnel Services – Salaries				\$116,957.64
200 <u>Personnel Services – Employee Benefits</u>				
210 Group Insurance – Contracted Provider				26,587.44
220 Social Security Contributions				8,726.36
230 PSERS Retirement Contributions				38,093.13
Total Personnel Services – Employee Benefits				\$73,406.93
300 <u>Purchased Professional and Technical Services</u>				
330 Other Professional Services				1,773.06
Total Purchased Professional and Technical Services				\$1,773.06
500 <u>Other Purchased Services</u>				
580 Travel				956.27
Total Other Purchased Services				\$956.27
600 <u>Supplies</u>				
610 General Supplies				2,550.65
Total Supplies				\$2,550.65
800 <u>Other Objects</u>				
810 Dues and Fees				130.00
Total Other Objects				\$130.00
Total 2440 Nursing Services				\$195,774.55

LEA : 111317503 Southern Huntingdon County SD

Printed 3/8/2019 1:27:57 PM

General Fund (10)				
2500 Support Services – Business	<u>Elementary</u>	<u>Secondary</u>	<u>Federal</u>	<u>Total</u>
100 <u>Personnel Services – Salaries</u>				
100 Personnel Services – Salaries				141,274.63
Total Personnel Services – Salaries				\$141,274.63
200 <u>Personnel Services – Employee Benefits</u>				
210 Group Insurance – Contracted Provider				70,348.38
220 Social Security Contributions				10,017.80
230 PSERS Retirement Contributions				46,013.19
Total Personnel Services – Employee Benefits				\$126,379.37
300 <u>Purchased Professional and Technical Services</u>				
330 Other Professional Services				14,098.16
Total Purchased Professional and Technical Services				\$14,098.16
500 <u>Other Purchased Services</u>				
530 Communications				514.37
580 Travel				1,028.87
Total Other Purchased Services				\$1,543.24
600 <u>Supplies</u>				
610 General Supplies				2,192.34
Total Supplies				\$2,192.34
800 <u>Other Objects</u>				
810 Dues and Fees				675.40
Total Other Objects				\$675.40
Total 2500 Support Services – Business				\$286,163.14

LEA : 111317503 Southern Huntingdon County SD

Printed 3/8/2019 1:27:57 PM

General Fund (10)				
2510 Fiscal Services	<u>Elementary</u>	<u>Secondary</u>	<u>Federal</u>	<u>Total</u>
100 <u>Personnel Services – Salaries</u>				
100 Personnel Services – Salaries				141,274.63
Total Personnel Services – Salaries				\$141,274.63
200 <u>Personnel Services – Employee Benefits</u>				
210 Group Insurance – Contracted Provider				70,348.38
220 Social Security Contributions				10,017.80
230 PSERS Retirement Contributions				46,013.19
Total Personnel Services – Employee Benefits				\$126,379.37
300 <u>Purchased Professional and Technical Services</u>				
330 Other Professional Services				14,098.16
Total Purchased Professional and Technical Services				\$14,098.16
500 <u>Other Purchased Services</u>				
530 Communications				514.37
580 Travel				1,028.87
Total Other Purchased Services				\$1,543.24
600 <u>Supplies</u>				
610 General Supplies				2,192.34
Total Supplies				\$2,192.34
800 <u>Other Objects</u>				
810 Dues and Fees				675.40
Total Other Objects				\$675.40
Total 2510 Fiscal Services				\$286,163.14

LEA : 111317503 Southern Huntingdon County SD

Printed 3/8/2019 1:27:57 PM

General Fund (10)

2511 Supervision of Fiscal Services - Head of Component	<u>Elementary</u>	<u>Secondary</u>	<u>Federal</u>	<u>Total</u>
100 <u>Personnel Services – Salaries</u>				
100 Personnel Services – Salaries				82,111.84
Total Personnel Services – Salaries				\$82,111.84
200 <u>Personnel Services – Employee Benefits</u>				
210 Group Insurance – Contracted Provider				37,463.04
220 Social Security Contributions				5,766.15
230 PSERS Retirement Contributions				26,743.92
Total Personnel Services – Employee Benefits				\$69,973.11
300 <u>Purchased Professional and Technical Services</u>				
330 Other Professional Services				14,098.16
Total Purchased Professional and Technical Services				\$14,098.16
500 <u>Other Purchased Services</u>				
530 Communications				514.37
580 Travel				1,028.87
Total Other Purchased Services				\$1,543.24
600 <u>Supplies</u>				
610 General Supplies				2,192.34
Total Supplies				\$2,192.34
800 <u>Other Objects</u>				
810 Dues and Fees				675.40
Total Other Objects				\$675.40
Total 2511 Supervision of Fiscal Services - Head of Component				\$170,594.09

LEA : 111317503 Southern Huntingdon County SD

Printed 3/8/2019 1:27:57 PM

General Fund (10)

2513 Receiving and Disbursing Funds Services

Elementary Secondary Federal Total

100 <u>Personnel Services – Salaries</u>				
100 Personnel Services – Salaries				32,090.58
Total Personnel Services – Salaries				\$32,090.58
200 <u>Personnel Services – Employee Benefits</u>				
210 Group Insurance – Contracted Provider				12,990.23
220 Social Security Contributions				2,347.27
230 PSERS Retirement Contributions				10,451.94
Total Personnel Services – Employee Benefits				\$25,789.44
Total 2513 Receiving and Disbursing Funds Services				\$57,880.02

LEA : 111317503 Southern Huntingdon County SD

Printed 3/8/2019 1:27:57 PM

General Fund (10)

2514 Payroll Services

	<u>Elementary</u>	<u>Secondary</u>	<u>Federal</u>	<u>Total</u>
100 <u>Personnel Services – Salaries</u>				
100 Personnel Services – Salaries				27,072.21
Total Personnel Services – Salaries				\$27,072.21
200 <u>Personnel Services – Employee Benefits</u>				
210 Group Insurance – Contracted Provider				19,895.11
220 Social Security Contributions				1,904.38
230 PSERS Retirement Contributions				8,817.33
Total Personnel Services – Employee Benefits				\$30,616.82
Total 2514 Payroll Services				\$57,689.03

LEA : 111317503 Southern Huntingdon County SD

Printed 3/8/2019 1:27:57 PM

General Fund (10)				
2600 Operation and Maintenance of Plant Services	<u>Elementary</u>	<u>Secondary</u>	<u>Federal</u>	<u>Total</u>
100 <u>Personnel Services – Salaries</u>				
100 Personnel Services – Salaries			4,568.62	350,273.53
Total Personnel Services – Salaries			\$4,568.62	\$350,273.53
200 <u>Personnel Services – Employee Benefits</u>				
210 Group Insurance – Contracted Provider				96,471.71
220 Social Security Contributions			346.90	26,430.41
230 PSERS Retirement Contributions			1,488.04	115,829.14
Total Personnel Services – Employee Benefits			\$1,834.94	\$238,731.26
300 <u>Purchased Professional and Technical Services</u>				
330 Other Professional Services				31,051.55
Total Purchased Professional and Technical Services				\$31,051.55
400 <u>Purchased Property Services</u>				
410 Cleaning Services				21,947.69
420 Utility Services				217,712.52
430 Repairs and Maintenance Services				289,394.86
440 Rentals				2,630.00
Total Purchased Property Services				\$531,685.07
500 <u>Other Purchased Services</u>				
522 Automotive Liability Insurance				8,047.00
523 General Property and Liability Insurance				58,814.00
529 Other Insurance				117,401.75
530 Communications				18,188.23
580 Travel				5,688.60
Total Other Purchased Services				\$208,139.58
600 <u>Supplies</u>				
610 General Supplies	31,467.90	42,994.50		74,462.40
620 Energy				168,018.84
Total Supplies	\$31,467.90	\$42,994.50		\$242,481.24
700 <u>Property</u>				
752 Capital Equipment – Original and Additional				5,372.29
762 Capitalized Equipment - Replacement				67,969.50
Total Property				\$73,341.79
800 <u>Other Objects</u>				
810 Dues and Fees				4,943.18
Total Other Objects				\$4,943.18
Total 2600 Operation and Maintenance of Plant Services	\$31,467.90	\$42,994.50	\$6,403.56	\$1,680,647.20

LEA : 111317503 Southern Huntingdon County SD

Printed 3/8/2019 1:27:57 PM

General Fund (10)				
2610 Supervision of Operation and Maintenance of Plant Services	<u>Elementary</u>	<u>Secondary</u>	<u>Federal</u>	<u>Total</u>
100 <u>Personnel Services – Salaries</u>				
100 Personnel Services – Salaries				49,496.09
Total Personnel Services – Salaries				\$49,496.09
200 <u>Personnel Services – Employee Benefits</u>				
210 Group Insurance – Contracted Provider				19,993.32
220 Social Security Contributions				4,099.03
230 PSERS Retirement Contributions				18,097.22
Total Personnel Services – Employee Benefits				\$42,189.57
Total 2610 Supervision of Operation and Maintenance of Plant Services				\$91,685.66

LEA : 111317503 Southern Huntingdon County SD

Printed 3/8/2019 1:27:57 PM

General Fund (10)

2611 Supervision of Operation and Maintenance of Plant Services – Head of Component	<u>Elementary</u>	<u>Secondary</u>	<u>Federal</u>	<u>Total</u>
100 <u>Personnel Services – Salaries</u>				
100 Personnel Services – Salaries				49,496.09
Total Personnel Services – Salaries				\$49,496.09
200 <u>Personnel Services – Employee Benefits</u>				
210 Group Insurance – Contracted Provider				19,993.32
220 Social Security Contributions				4,099.03
230 PSERS Retirement Contributions				18,097.22
Total Personnel Services – Employee Benefits				\$42,189.57
Total 2611 Supervision of Operation and Maintenance of Plant Services – Head of Component				\$91,685.66

LEA : 111317503 Southern Huntingdon County SD

Printed 3/8/2019 1:27:57 PM

General Fund (10)				
2620 Operation of Buildings Services	<u>Elementary</u>	<u>Secondary</u>	<u>Federal</u>	<u>Total</u>
100 <u>Personnel Services – Salaries</u>				
100 Personnel Services – Salaries			4,568.62	300,777.44
Total Personnel Services – Salaries			\$4,568.62	\$300,777.44
200 <u>Personnel Services – Employee Benefits</u>				
210 Group Insurance – Contracted Provider				76,478.39
220 Social Security Contributions			346.90	22,331.38
230 PSERS Retirement Contributions			1,488.04	97,731.92
Total Personnel Services – Employee Benefits			\$1,834.94	\$196,541.69
300 <u>Purchased Professional and Technical Services</u>				
330 Other Professional Services				31,051.55
Total Purchased Professional and Technical Services				\$31,051.55
400 <u>Purchased Property Services</u>				
410 Cleaning Services				21,947.69
420 Utility Services				217,712.52
430 Repairs and Maintenance Services				247,385.78
440 Rentals				2,630.00
Total Purchased Property Services				\$489,675.99
500 <u>Other Purchased Services</u>				
522 Automotive Liability Insurance				8,047.00
523 General Property and Liability Insurance				58,814.00
529 Other Insurance				117,401.75
530 Communications				18,188.23
580 Travel				5,688.60
Total Other Purchased Services				\$208,139.58
600 <u>Supplies</u>				
610 General Supplies	31,467.90	42,994.50		74,462.40
620 Energy				168,018.84
Total Supplies	\$31,467.90	\$42,994.50		\$242,481.24
700 <u>Property</u>				
752 Capital Equipment – Original and Additional				5,372.29
762 Capitalized Equipment - Replacement				67,969.50
Total Property				\$73,341.79
800 <u>Other Objects</u>				
810 Dues and Fees				4,943.18
Total Other Objects				\$4,943.18
Total 2620 Operation of Buildings Services	\$31,467.90	\$42,994.50	\$6,403.56	\$1,546,952.46

LEA : 111317503 Southern Huntingdon County SD

Printed 3/8/2019 1:27:57 PM

General Fund (10)				
2650 Vehicle Operation and Maintenance Services (Other Than Student Transportation Vehicles)	<u>Elementary</u>	<u>Secondary</u>	<u>Federal</u>	<u>Total</u>
400 <u>Purchased Property Services</u>				
430 Repairs and Maintenance Services				42,009.08
Total Purchased Property Services				\$42,009.08
Total 2650 Vehicle Operation and Maintenance Services (Other Than Student Transportation Vehicles)				\$42,009.08

LEA : 111317503 Southern Huntingdon County SD

Printed 3/8/2019 1:27:57 PM

General Fund (10)				
2700 Student Transportation Services	<u>Elementary</u>	<u>Secondary</u>	<u>Federal</u>	<u>Total</u>
100 <u>Personnel Services – Salaries</u>				
100 Personnel Services – Salaries				519.28
Total Personnel Services – Salaries				\$519.28
200 <u>Personnel Services – Employee Benefits</u>				
220 Social Security Contributions				39.69
230 PSERS Retirement Contributions				15.63
Total Personnel Services – Employee Benefits				\$55.32
300 <u>Purchased Professional and Technical Services</u>				
330 Other Professional Services				2,991.33
Total Purchased Professional and Technical Services				\$2,991.33
500 <u>Other Purchased Services</u>				
511 Student Transportation Services from Another LEA Within the State				2,750.00
513 Contracted Carriers				1,241,451.79
516 Student Transportation Services From the IU				2,593.35
Total Other Purchased Services				\$1,246,795.14
600 <u>Supplies</u>				
610 General Supplies				4,300.00
Total Supplies				\$4,300.00
700 <u>Property</u>				
752 Capital Equipment – Original and Additional				2,647.86
Total Property				\$2,647.86
Total 2700 Student Transportation Services				\$1,257,308.93

LEA : 111317503 Southern Huntingdon County SD

Printed 3/8/2019 1:27:57 PM

General Fund (10)				
2720 Vehicle Operation Services	<u>Elementary</u>	<u>Secondary</u>	<u>Federal</u>	<u>Total</u>
300 <u>Purchased Professional and Technical Services</u>				
330 Other Professional Services				2,991.33
Total Purchased Professional and Technical Services				\$2,991.33
500 <u>Other Purchased Services</u>				
511 Student Transportation Services from Another LEA Within the State				2,750.00
513 Contracted Carriers				1,241,451.79
516 Student Transportation Services From the IU				2,593.35
Total Other Purchased Services				\$1,246,795.14
600 <u>Supplies</u>				
610 General Supplies				4,300.00
Total Supplies				\$4,300.00
700 <u>Property</u>				
752 Capital Equipment – Original and Additional				2,647.86
Total Property				\$2,647.86
Total 2720 Vehicle Operation Services				\$1,256,734.33

LEA : 111317503 Southern Huntingdon County SD

Printed 3/8/2019 1:27:57 PM

General Fund (10)				
2730 Monitoring Services	<u>Elementary</u>	<u>Secondary</u>	<u>Federal</u>	<u>Total</u>
100 <u>Personnel Services – Salaries</u>				
100 Personnel Services – Salaries				519.28
Total Personnel Services – Salaries				\$519.28
200 <u>Personnel Services – Employee Benefits</u>				
220 Social Security Contributions				39.69
230 PSERS Retirement Contributions				15.63
Total Personnel Services – Employee Benefits				\$55.32
Total 2730 Monitoring Services				\$574.60

LEA : 111317503 Southern Huntingdon County SD

Printed 3/8/2019 1:27:57 PM

General Fund (10)

2800 Support Services – Central	<u>Elementary</u>	<u>Secondary</u>	<u>Federal</u>	<u>Total</u>
100 <u>Personnel Services – Salaries</u>				
100 Personnel Services – Salaries			1,500.00	3,000.00
Total Personnel Services – Salaries			\$1,500.00	\$3,000.00
200 <u>Personnel Services – Employee Benefits</u>				
220 Social Security Contributions			114.75	229.50
230 PSERS Retirement Contributions			488.55	977.10
Total Personnel Services – Employee Benefits			\$603.30	\$1,206.60
Total 2800 Support Services – Central			\$2,103.30	\$4,206.60

LEA : 111317503 Southern Huntingdon County SD

Printed 3/8/2019 1:27:57 PM

General Fund (10)

2850 State and Federal Agency Liaison Services	<u>Elementary</u>	<u>Secondary</u>	<u>Federal</u>	<u>Total</u>
100 <u>Personnel Services – Salaries</u>				
100 Personnel Services – Salaries			1,500.00	3,000.00
Total Personnel Services – Salaries			\$1,500.00	\$3,000.00
200 <u>Personnel Services – Employee Benefits</u>				
220 Social Security Contributions			114.75	229.50
230 PSERS Retirement Contributions			488.55	977.10
Total Personnel Services – Employee Benefits			\$603.30	\$1,206.60
Total 2850 State and Federal Agency Liaison Services			\$2,103.30	\$4,206.60

General Fund (10)

2900 Other Support Services	<u>Elementary</u>	<u>Secondary</u>	<u>Federal</u>	<u>Total</u>
100 <u>Personnel Services – Salaries</u>				
100 Personnel Services – Salaries				145.02
Total Personnel Services – Salaries				\$145.02
200 <u>Personnel Services – Employee Benefits</u>				
220 Social Security Contributions				11.08
250 Unemployment Compensation				3,453.63
Total Personnel Services – Employee Benefits				\$3,464.71
Total 2900 Other Support Services				\$3,609.73

LEA : 111317503 Southern Huntingdon County SD

Printed 3/8/2019 1:27:57 PM

General Fund (10)

2910 Support Services Not Listed Elsewhere In the 2000 Series

Elementary Secondary Federal Total

100 <u>Personnel Services – Salaries</u>				
100 Personnel Services – Salaries				145.02
Total Personnel Services – Salaries				\$145.02
200 <u>Personnel Services – Employee Benefits</u>				
220 Social Security Contributions				11.08
250 Unemployment Compensation				3,453.63
Total Personnel Services – Employee Benefits				\$3,464.71
Total 2910 Support Services Not Listed Elsewhere In the 2000 Series				\$3,609.73

LEA : 111317503 Southern Huntingdon County SD

Printed 3/8/2019 1:28:00 PM

General Fund (10)	
3000 Operation of Non-Instructional Services	<u>Total</u>
100 <u>Personnel Services – Salaries</u>	
100 Personnel Services – Salaries	138,457.98
Total Personnel Services – Salaries	\$138,457.98
200 <u>Personnel Services – Employee Benefits</u>	
210 Group Insurance – Contracted Provider	6,594.12
220 Social Security Contributions	8,655.05
230 PSERS Retirement Contributions	32,444.66
Total Personnel Services – Employee Benefits	\$47,693.83
300 <u>Purchased Professional and Technical Services</u>	
330 Other Professional Services	1,880.00
Total Purchased Professional and Technical Services	\$1,880.00
400 <u>Purchased Property Services</u>	
430 Repairs and Maintenance Services	6,327.39
Total Purchased Property Services	\$6,327.39
500 <u>Other Purchased Services</u>	
510 Student Transportation Services	23,308.87
580 Travel	862.77
Total Other Purchased Services	\$24,171.64
600 <u>Supplies</u>	
610 General Supplies	6,068.87
640 Books and Periodicals	1,086.99
Total Supplies	\$7,155.86
700 <u>Property</u>	
762 Capitalized Equipment - Replacement	12,270.85
Total Property	\$12,270.85
800 <u>Other Objects</u>	
810 Dues and Fees	4,718.00
Total Other Objects	\$4,718.00
Total 3000 Operation of Non-Instructional Services	\$242,675.55

LEA : 111317503 Southern Huntingdon County SD

Printed 3/8/2019 1:28:00 PM

General Fund (10)				
3200 Student Activities	<u>Elementary</u>	<u>Secondary</u>	<u>Federal</u>	<u>Total</u>
100 <u>Personnel Services – Salaries</u>				
100 Personnel Services – Salaries				138,457.98
Total Personnel Services – Salaries				\$138,457.98
200 <u>Personnel Services – Employee Benefits</u>				
210 Group Insurance – Contracted Provider				6,594.12
220 Social Security Contributions				8,655.05
230 PSERS Retirement Contributions				32,444.66
Total Personnel Services – Employee Benefits				\$47,693.83
300 <u>Purchased Professional and Technical Services</u>				
330 Other Professional Services				1,880.00
Total Purchased Professional and Technical Services				\$1,880.00
400 <u>Purchased Property Services</u>				
430 Repairs and Maintenance Services				6,327.39
Total Purchased Property Services				\$6,327.39
500 <u>Other Purchased Services</u>				
510 Student Transportation Services				23,308.87
580 Travel				862.77
Total Other Purchased Services				\$24,171.64
600 <u>Supplies</u>				
610 General Supplies				6,068.87
640 Books and Periodicals				1,086.99
Total Supplies				\$7,155.86
700 <u>Property</u>				
762 Capitalized Equipment - Replacement				12,270.85
Total Property				\$12,270.85
800 <u>Other Objects</u>				
810 Dues and Fees				4,718.00
Total Other Objects				\$4,718.00
Total 3200 Student Activities				\$242,675.55

General Fund (10)

5000 Other Expenditures and Financing Uses		<u>Total</u>
800 <u>Other Objects</u>		
830 Interest		67,284.00
Total Other Objects		\$67,284.00
900 <u>Other Uses of Funds</u>		
910 Redemption of Principal		760,000.00
930 Fund Transfers		6,944.00
Total Other Uses of Funds		\$766,944.00
Total 5000 Other Expenditures and Financing Uses		\$834,228.00

LEA : 111317503 Southern Huntingdon County SD

Printed 3/8/2019 1:28:01 PM

General Fund (10)

5100 Debt Service / Other Expenditures and Financing Uses	<u>Elementary</u>	<u>Secondary</u>	<u>Federal</u>	<u>Total</u>
800 <u>Other Objects</u>				
830 Interest				67,284.00
Total Other Objects				\$67,284.00
900 <u>Other Uses of Funds</u>				
910 Redemption of Principal				760,000.00
Total Other Uses of Funds				\$760,000.00
Total 5100 Debt Service / Other Expenditures and Financing Uses				\$827,284.00

LEA : 111317503 Southern Huntingdon County SD

Printed 3/8/2019 1:28:01 PM

General Fund (10)

5110 Debt Service	<u>Elementary</u>	<u>Secondary</u>	<u>Federal</u>	<u>Total</u>
800 <u>Other Objects</u>				
830 Interest				67,284.00
Total Other Objects				\$67,284.00
900 <u>Other Uses of Funds</u>				
910 Redemption of Principal				760,000.00
Total Other Uses of Funds				\$760,000.00
Total 5110 Debt Service				\$827,284.00

LEA : 111317503 Southern Huntingdon County SD

Printed 3/8/2019 1:28:01 PM

General Fund (10)				
5200 Interfund Transfers – Out	<u>Elementary</u>	<u>Secondary</u>	<u>Federal</u>	<u>Total</u>
900 <u>Other Uses of Funds</u>				
930 Fund Transfers				6,944.00
Total Other Uses of Funds				\$6,944.00
Total 5200 Interfund Transfers – Out				\$6,944.00

LEA : 111317503 Southern Huntingdon County SD

Printed 3/8/2019 1:28:01 PM

General Fund (10)				
5250 Enterprise Fund Transfers	<u>Elementary</u>	<u>Secondary</u>	<u>Federal</u>	<u>Total</u>
900 <u>Other Uses of Funds</u>				
930 Fund Transfers				6,944.00
Total Other Uses of Funds				\$6,944.00
Total 5250 Enterprise Fund Transfers				\$6,944.00

LEA : 111317503 Southern Huntingdon County SD

Printed 3/8/2019 1:28:07 PM

	<u>General Fund(10)</u>	<u>Public Purpose Trust(27)</u>	<u>Other Compt Approved (28)</u>	<u>Athletic / Activity(29)</u>	<u>Capital Reserve (690. 1850)(31)</u>
1000 Instruction					
1100 Regular Programs - Elementary / Secondary	6,440,925.02				
1200 Special Programs - Elementary / Secondary	2,205,917.58				
1300 Vocational Education	850,475.29				
1400 Other Instructional Programs - Elementary / Secondary	221,733.59				
Total Instruction	\$9,719,051.48				
2000 Support Services					
2100 Support Services - Students	372,886.85				
2200 Support Services - Instructional Staff	618,726.12				
2300 Support Services - Administration	1,004,813.50				
2400 Support Services - Pupil Health	195,774.55				
2500 Support Services - Business	286,163.14				
2600 Operation and Maintenance of Plant Services	1,680,647.20				
2700 Student Transportation Services	1,257,308.93				
2800 Support Services - Central	4,206.60				
2900 Other Support Services	3,609.73				
Total Support Services	\$5,424,136.62				
3000 Operation of Non-Instructional Services					
3200 Student Activities	242,675.55				
Total Operation of Non-Instructional Services	\$242,675.55				
5000 Other Expenditures and Financing Uses					
5100 Debt Service / Other Expenditures and Financing Uses	827,284.00				
5200 Interfund Transfers - Out	6,944.00				
Total Other Expenditures and Financing Uses	\$834,228.00				
TOTAL ACTUAL EXPENDITURES & OTHER FINANCING USES	\$16,220,091.65				

LEA : 111317503 Southern Huntingdon County SD

Printed 3/8/2019 1:28:07 PM

	<u>Capital Reserve (1431)(32)</u>	<u>Other Capital Projects Fund(39)</u>	<u>Debt Service(40)</u>	<u>Permanent(90)</u>	<u>Total</u>
1000 <u>Instruction</u>					
1100 Regular Programs - Elementary / Secondary					6,440,925.02
1200 Special Programs - Elementary / Secondary					2,205,917.58
1300 Vocational Education					850,475.29
1400 Other Instructional Programs - Elementary / Secondary					221,733.59
Total Instruction					\$9,719,051.48
2000 <u>Support Services</u>					
2100 Support Services - Students					372,886.85
2200 Support Services - Instructional Staff					618,726.12
2300 Support Services - Administration					1,004,813.50
2400 Support Services - Pupil Health					195,774.55
2500 Support Services - Business					286,163.14
2600 Operation and Maintenance of Plant Services					1,680,647.20
2700 Student Transportation Services					1,257,308.93
2800 Support Services - Central					4,206.60
2900 Other Support Services					3,609.73
Total Support Services					\$5,424,136.62
3000 <u>Operation of Non-Instructional Services</u>					
3200 Student Activities					242,675.55
Total Operation of Non-Instructional Services					\$242,675.55
5000 <u>Other Expenditures and Financing Uses</u>					
5100 Debt Service / Other Expenditures and Financing Uses					827,284.00
5200 Interfund Transfers - Out					6,944.00
Total Other Expenditures and Financing Uses					\$834,228.00
TOTAL ACTUAL EXPENDITURES & OTHER FINANCING USES					\$16,220,091.65

LEA : 111317503 Southern Huntingdon County SD

Printed 3/8/2019 1:28:09 PM

PSERS Salary Data (Salary Data should relate to the General Fund only)

Amount	Description	Amount
	Total Salary Base for salaries subject to PSERS withholding	6,536,926.50
	Total Federally Funded salaries subject to PSERS withholding	472,547.16

Title I Expenditure Data

Amount	Description	Amount
	Expenditures Funded with Current Title I Funds	346,292.00
	Expenditures Funded with Carry over Title I Funds	
Total Title I Expenditure Data		\$346,292.00

Benefits for Staff Relative to Collective Bargaining Agreements

	OBJECT	COVERED	NOT COVERED	TOTAL
10 General Fund	No Self Insurance data to report			
	211 Medical Insurance	1,112,031.04	218,182.57	1,330,213.61
	212 Dental Insurance	20,555.33	3,585.75	24,141.08
	215 Eye Care Insurance			
	216 Prescription Insurance			
	271 Self-Insurance Medical Benefits			
	272 Self-Insurance Dental Benefits			
	275 Self-Insurance Eye Care Benefits			
	276 Self-Insurance Prescription Benefits			
	FUND TOTAL	\$1,132,586.37	\$221,768.32	\$1,354,354.69
50 Enterprise Fund	No Self Insurance data to report			
	211 Medical Insurance			
	212 Dental Insurance			
	215 Eye Care Insurance			
	216 Prescription Insurance			
	271 Self-Insurance Medical Benefits			
	272 Self-Insurance Dental Benefits			
	275 Self-Insurance Eye Care Benefits			
	276 Self-Insurance Prescription Benefits			
	FUND TOTAL			
60 Internal Service Fund	No Self Insurance data to report			
	211 Medical Insurance			
	212 Dental Insurance			
	215 Eye Care Insurance			
	216 Prescription Insurance			
	271 Self-Insurance Medical Benefits			
	272 Self-Insurance Dental Benefits			
	275 Self-Insurance Eye Care Benefits			
	276 Self-Insurance Prescription Benefits			
	FUND TOTAL			
Total of All Funds		\$1,132,586.37	\$221,768.32	\$1,354,354.69

LEA : 111317503 Southern Huntingdon County SD

Printed 3/8/2019 1:28:11 PM

Function	Special Education (Prior Year)	Nonspecial Education (Prior Year)	Total (Prior Year)	Special Education (Current Year)	Nonspecial Education (Current Year)	Total (Current Year)
2120 Guidance Services	205,999.70	68,666.57	274,666.27	206,701.17	68,900.39	275,601.56
2140 Psychological Services	67,430.24	22,476.75	89,906.99	72,964.07	24,321.22	97,285.29
2150 Speech Pathology and Audiology Services						
2160 Social Work Services						
2260 Instruction and Curriculum Development Services						
2350 Legal and Accounting Services						
2420 Medical Services						
2440 Nursing Services	49,423.39	148,270.16	197,693.55	48,943.63	146,830.92	195,774.55
2700 Student Transportation Services	321,482.10	897,211.69	1,218,693.79	363,244.86	884,718.07	1,247,962.93
Total	\$644,335.43	\$1,136,625.17	\$1,780,960.60	\$691,853.73	\$1,124,770.60	\$1,816,624.33

LEA : 111317503 Southern Huntingdon County SD

Printed 3/8/2019 1:28:13 PM

(PRINCIPAL AMOUNTS ONLY)								
<u>GOVERNMENTAL FUNDS/ ACTIVITIES</u>	Short-Term Borrowing	General Obligation Bonds/Notes	Authority Building Obligations	Other Long-Term Debt	Other Post- Employment Benefits (OPEB)	Compensated Absences	Net Pension Liability	Total
1. Debt at Beginning of Fiscal Year		3,940,000.00			3,768,922.00	204,148.00	22,476,594.00	30,389,664.00
2. Additional Debt Incurred During Year					3,000.00	16,122.00	1,262,000.00	1,281,122.00
3. Retirements and Repayments		760,000.00						760,000.00
4. Debt at End of Fiscal Year		3,180,000.00			3,771,922.00	220,270.00	23,738,594.00	30,910,786.00
5. Accreted Interest at End Of Fiscal Year								
6. Total Debt and Accreted Interest		3,180,000.00			3,771,922.00	220,270.00	23,738,594.00	30,910,786.00
7. Current Portion P&I - Due within 1 year		770,000.00						770,000.00
8. Interest Paid during current fiscal year		67,284.00						67,284.00

(PRINCIPAL AMOUNTS ONLY)								
<u>PROPRIETARY FUNDS</u>	Short-Term Borrowing	General Obligation Bonds/Notes	Authority Building Obligations	Other Long-Term Debt	Other Post- Employment Benefits (OPEB)	Compensated Absences	Net Pension Liability	Total
1. Debt at Beginning of Fiscal Year					32,000.00	1,625.00	716,406.00	750,031.00
2. Additional Debt Incurred During Year							42,000.00	42,000.00
3. Retirements and Repayments						237.00		237.00
4. Debt at End of Fiscal Year					32,000.00	1,388.00	758,406.00	791,794.00
5. Accreted Interest at End Of Fiscal Year								
6. Total Debt and Accreted Interest					32,000.00	1,388.00	758,406.00	791,794.00
7. Current Portion P&I - Due within 1 year								
8. Interest Paid during current fiscal year								

LEA : 111317503 Southern Huntingdon County SD

Printed 3/8/2019 1:28:13 PM

Total Principal and Interest Payments Made by Your School - All Funds

Function	Fund		Principal (910)	Principal (920)	Interest (830)	Total (Principal +Interest)	Misc Other Uses (990)
5110	10	General Fund	760,000.00		67,284.00	827,284.00	
5110	20	Special Revenue Funds					
5110	30	Capital Projects Funds					
5110	40	Debt Service Fund					
5110	90	Permanent Fund					
5120	10	General Fund					
5120	20	Special Revenue Funds					
5120	30	Capital Projects Funds					
5120	40	Debt Service Fund					
Total Debt Payments - Governmental Funds			\$760,000.00		\$67,284.00	\$827,284.00	

Function	Fund		Principal (910)	Principal (920)	Interest (830)	Total (Principal +Interest)
5110	50	Enterprise Fund				
5110	60	Internal Service Fund				
5120	50	Enterprise Fund				
5120	60	Internal Service Fund				
Total Debt Payments - Proprietary Funds						

LEA : 111317503 Southern Huntingdon County SD

Printed 3/8/2019 1:28:13 PM

Debt Category	Debt Issue Date (MM/YYYY)	Principal Amounts Only				Current Portion Due Within One Year (Principal and Interest)	Interest Paid During Fiscal Year
		Debt at Beginning of Fiscal Year	Additions	Reductions / Repayments	Debt at End of Fiscal Year		
General Obligation Bonds/Notes – CIB	09/2015	3,940,000.00		760,000.00	3,180,000.00	770,000.00	67,284.00
Compensated Absences		204,148.00	16,122.00		220,270.00		
Other Post-Employment Benefits (OPEB)		3,768,922.00	3,000.00		3,771,922.00		
Net Pension Liability		22,476,594.00	1,262,000.00		23,738,594.00		
Totals for Debt Entered:		\$30,389,664.00	\$1,281,122.00	\$760,000.00	\$30,910,786.00	\$770,000.00	\$67,284.00

Debt Category	Debt Issue Date (MM/YYYY)	Principal Amounts Only				Current Portion Due Within One Year (Principal and Interest)	Interest Paid During Fiscal Year
		Debt at Beginning of Fiscal Year	Additions	Reductions / Repayments	Debt at End of Fiscal Year		
Compensated Absences		1,625.00		237.00	1,388.00		
Other Post-Employment Benefits (OPEB)		32,000.00			32,000.00		
Net Pension Liability		716,406.00	42,000.00		758,406.00		
Totals for Debt Entered:		\$750,031.00	\$42,000.00	\$237.00	\$791,794.00		

LEA : 111317503 Southern Huntingdon County SD

General Fund (10)

Section 1: Tuition/Purchased Services as Reported within Expenditure Detail	Amount
Tuition Reported in General Fund Expenditures 1000-560	1,560,818.48
Purchased Services in General Fund Expenditures 1000-594 and 1000-597	
Section 1 Total	\$1,560,818.48

Section 2: Tuition Paid to Institution Types During Fiscal Year	Tuition Paid For Nonspecial Education	Tuition Paid For Special Education	Total
1 1306 Institutions			
2 Institutionalized Children's Programs			
3 Juveniles Incarcerated in Adult Facilities			
4 Residential Treatment Facilities			
5 Other Local Education Agencies	24,460.79	404,443.50	428,904.29
6 Brick and Mortar Charter Schools			
7 Cyber Charter Schools	258,866.62	246,374.56	505,241.18
8 Career and Technology Centers	553,401.96		553,401.96
9 Approved Private Schools			
10 PA Chartered Schools for the Deaf and Blind		45,312.77	45,312.77
11 Private Residential Rehabilitative Institutions	4,256.87	7,075.56	11,332.43
12 Juvenile Detention Centers			
13 Special Program Jointures			
14 Other Tuition Not Included Elsewhere In This Section		16,625.85	16,625.85
Section 2 Total	\$840,986.24	\$719,832.24	\$1,560,818.48

LEA : 111317503 Southern Huntingdon County SD

Printed 3/8/2019 1:28:15 PM

Food Service / Cafeteria Operations Fund (51)

3000 Operation of Non-Instructional Services		<u>Total</u>
100 <u>Personnel Services – Salaries</u>		
100 Personnel Services – Salaries	208,092.00	
Total Personnel Services – Salaries		\$208,092.00
200 <u>Personnel Services – Employee Benefits</u>		
210 Group Insurance – Contracted Provider	168,458.00	
Total Personnel Services – Employee Benefits		\$168,458.00
500 <u>Other Purchased Services</u>		
570 Food Service Management	89,725.00	
Total Other Purchased Services		\$89,725.00
600 <u>Supplies</u>		
610 General Supplies	14,458.00	
630 Food	253,625.00	
Total Supplies		\$268,083.00
700 <u>Property</u>		
740 Depreciation	2,697.00	
Total Property		\$2,697.00
800 <u>Other Objects</u>		
810 Dues and Fees	44,544.00	
Total Other Objects		\$44,544.00
Total 3000 Operation of Non-Instructional Services		\$781,599.00

LEA : 111317503 Southern Huntingdon County SD

Printed 3/8/2019 1:28:15 PM

Food Service / Cafeteria Operations Fund (51)

3100 Food Services	<u>Elementary</u>	<u>Secondary</u>	<u>Federal</u>	<u>Total</u>
100 <u>Personnel Services – Salaries</u>				
100 Personnel Services – Salaries				208,092.00
Total Personnel Services – Salaries				\$208,092.00
200 <u>Personnel Services – Employee Benefits</u>				
210 Group Insurance – Contracted Provider				168,458.00
Total Personnel Services – Employee Benefits				\$168,458.00
500 <u>Other Purchased Services</u>				
570 Food Service Management				89,725.00
Total Other Purchased Services				\$89,725.00
600 <u>Supplies</u>				
610 General Supplies				14,458.00
630 Food				253,625.00
Total Supplies				\$268,083.00
700 <u>Property</u>				
740 Depreciation				2,697.00
Total Property				\$2,697.00
800 <u>Other Objects</u>				
810 Dues and Fees				44,544.00
Total Other Objects				\$44,544.00
Total 3100 Food Services				\$781,599.00

	<u>Food Service(51)</u>	<u>Child Care Operations(52)</u>	<u>Other Enterprise(58)</u>	<u>Internal Service(60)</u>	<u>Total</u>
3000 <u>Operation of Non-Instructional Services</u>					
3100 Food Services	781,599.00				781,599.00
Total Operation of Non-Instructional Services	\$781,599.00				\$781,599.00
TOTAL ACTUAL EXPENDITURES & OTHER FINANCING USES	\$781,599.00				\$781,599.00